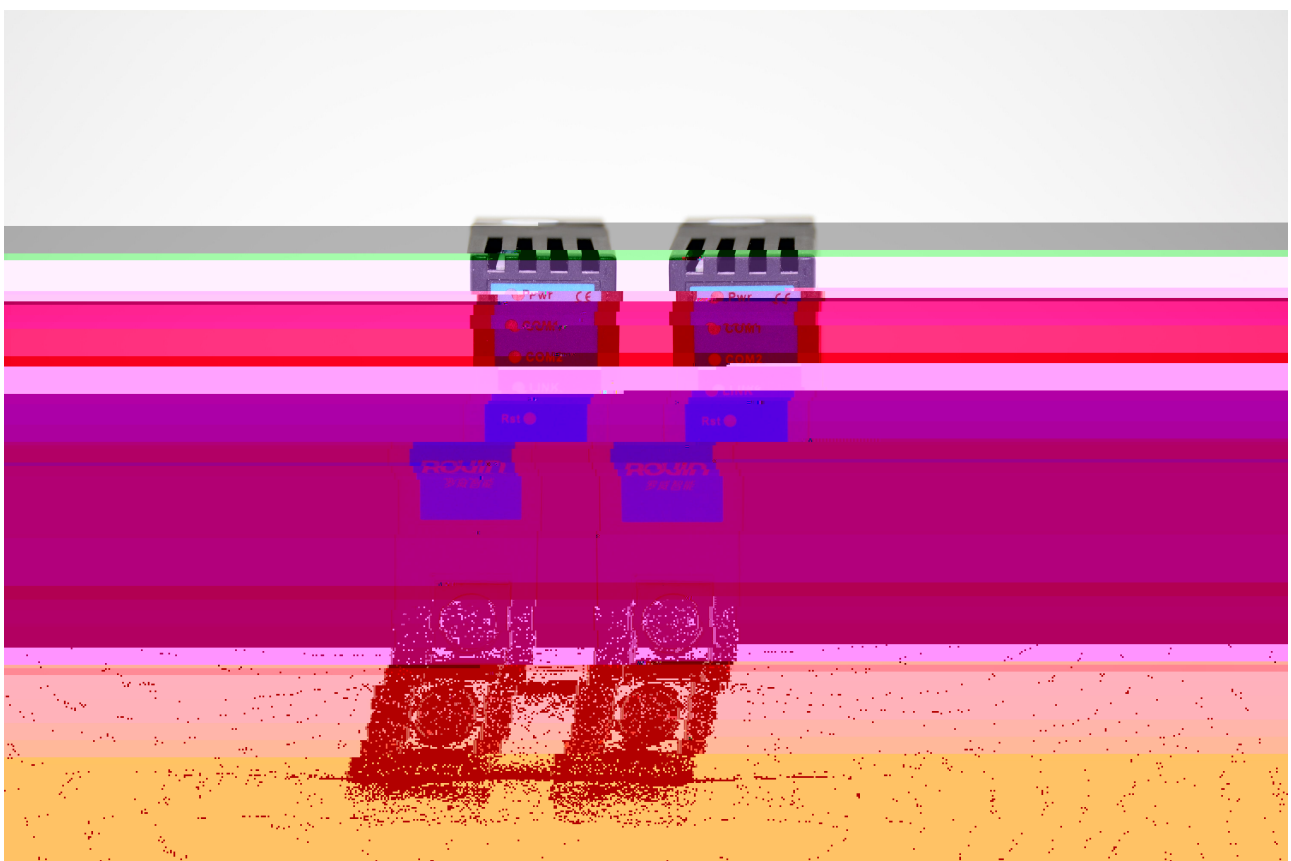




RVNet-FX



1. RVNet-FX

1.1

1.21

| | | | | |
|------|----|-------|--|-----|
| | FX | PLC | | PLC |
| MCGS | | RVNet | | PLC |

2

2.1



2.2



2.3

RVNet-FX MD8 X1 MD8 X2 RJ45 X3 X4

2.3.1 X1

X1 MD8 PLC

| | | |
|---|-------|------|
| 1 | ————— | TXD- |
| 2 | ————— | GND |
| 4 | ————— | RXD- |
| 5 | ————— | 5V |
| 7 | ————— | RXD+ |

X1 9.6k 19.2k 38.4K 115.2k

2.3.2 X2

X2 MD8

| | | |
|---|-------|------|
| 1 | ————— | RXD- |
| 2 | ————— | RXD+ |
| 3 | ————— | GND |
| 4 | ————— | TXD- |
| 7 | ————— | TXD+ |

X2 9.6k 19.2k 38.4K 115.2k

2.3.3 X3

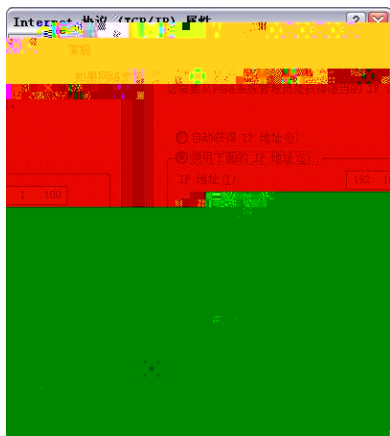
RJ45

| | | |
|---|-------|-----|
| 1 | ————— | TX+ |
| 2 | ————— | TX- |
| 3 | ————— | RX+ |
| 6 | ————— | RX- |

Link Active 10/100M T568A/
T568B

2.3.4 24VDC X4

X4 RVNet-FX 24VDC 24VDC±20%/100mA



Internet Explorer

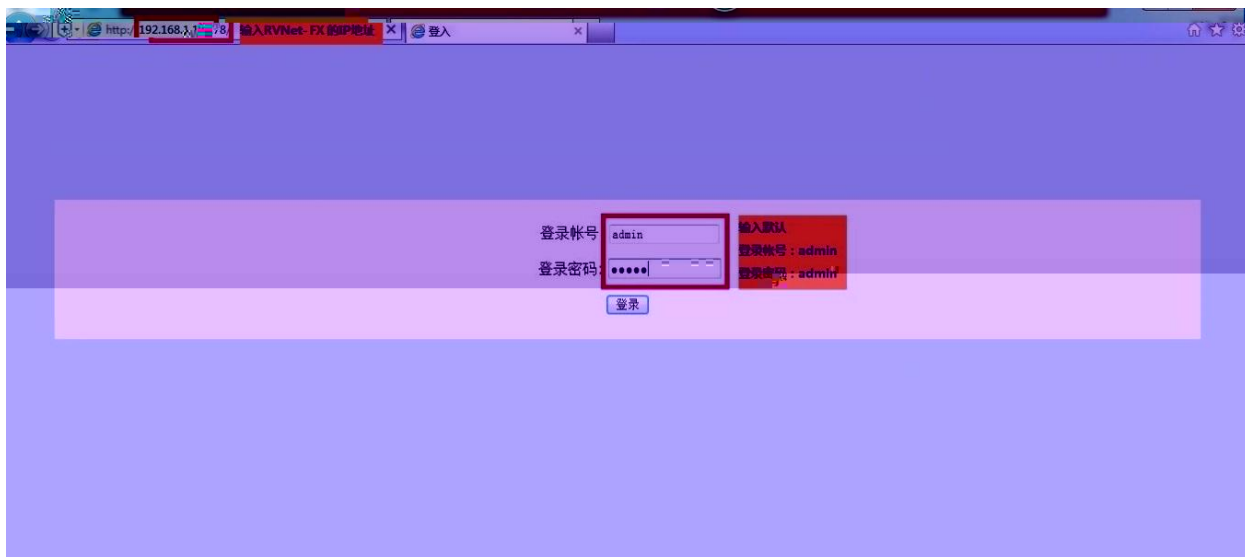
RVNet-FX

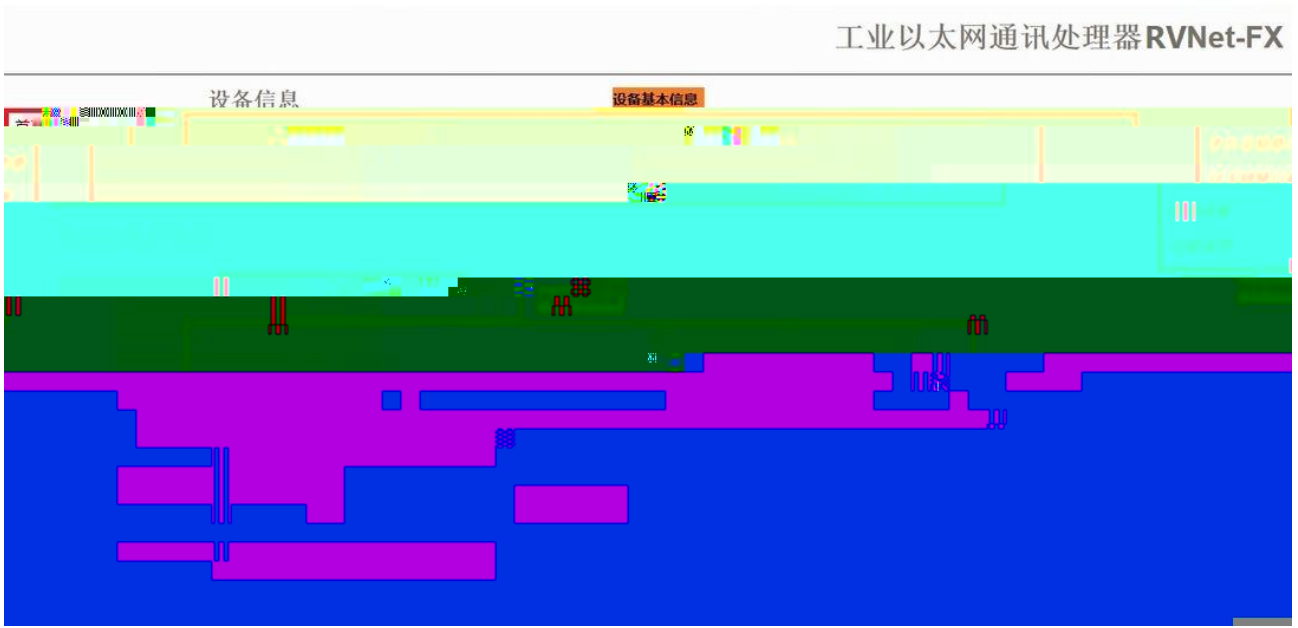
Web

192.168.1.178

RVNet-FX

IP





PLC

PLC

COM1 COM2

3.2.1



PLC

“ ” “ ”

“PLC (COM1)——>PLC ”

PLC

“ ” “ ”

“HMI (COM2)——> ”

HMI

HMI

RVNet-FX
"RVNetTCP"

" " "RVNetTCP" "

RVNet-FX 3

PLC (COM1) —> PLC
PLC " " "

PLC FX1S FX1N/FX2N FX3U/FX3G

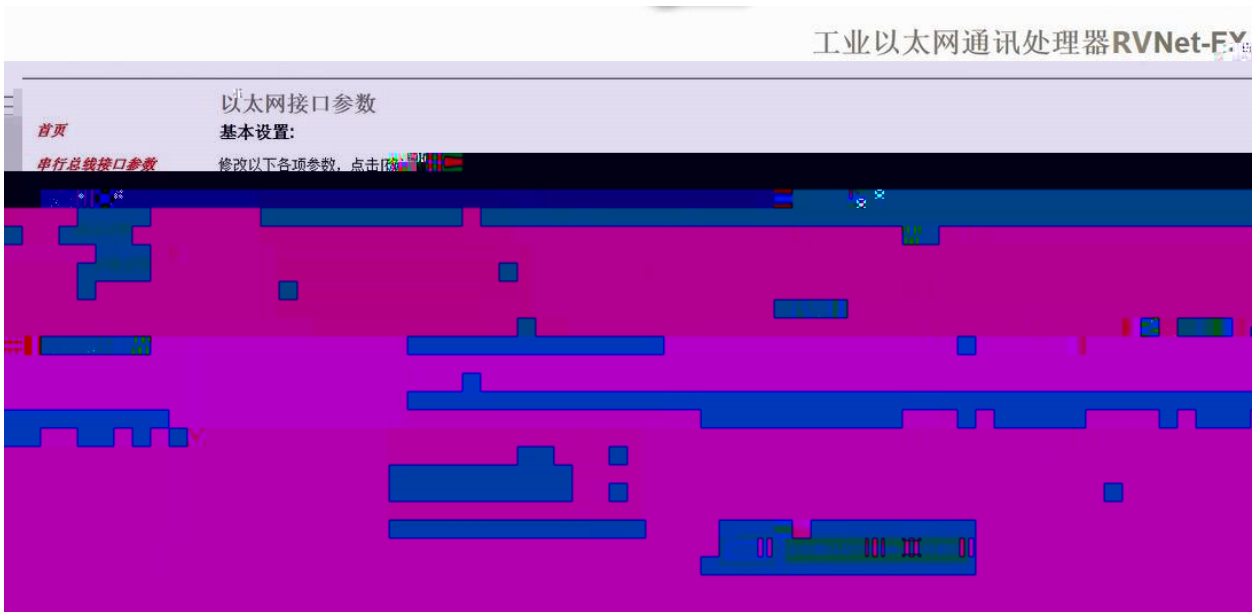
PLC (COM1) —>
"FX1N/FX2N" [

38400 19200 PLC PLC

HMI (COM2) —>
"HMI

"HMI " " " HMI

3.2.2



RVNet-FX IP

[] RVNet-FX

IP

5551

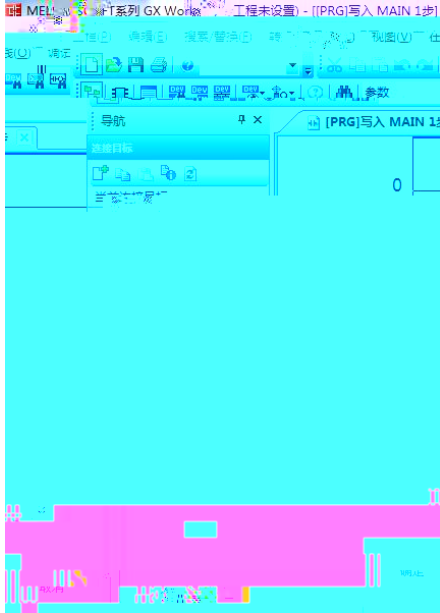
"RVNetTCP"

M

6f-EX

4.1.1 FX3G/3GC FX3S FX3U/3UC

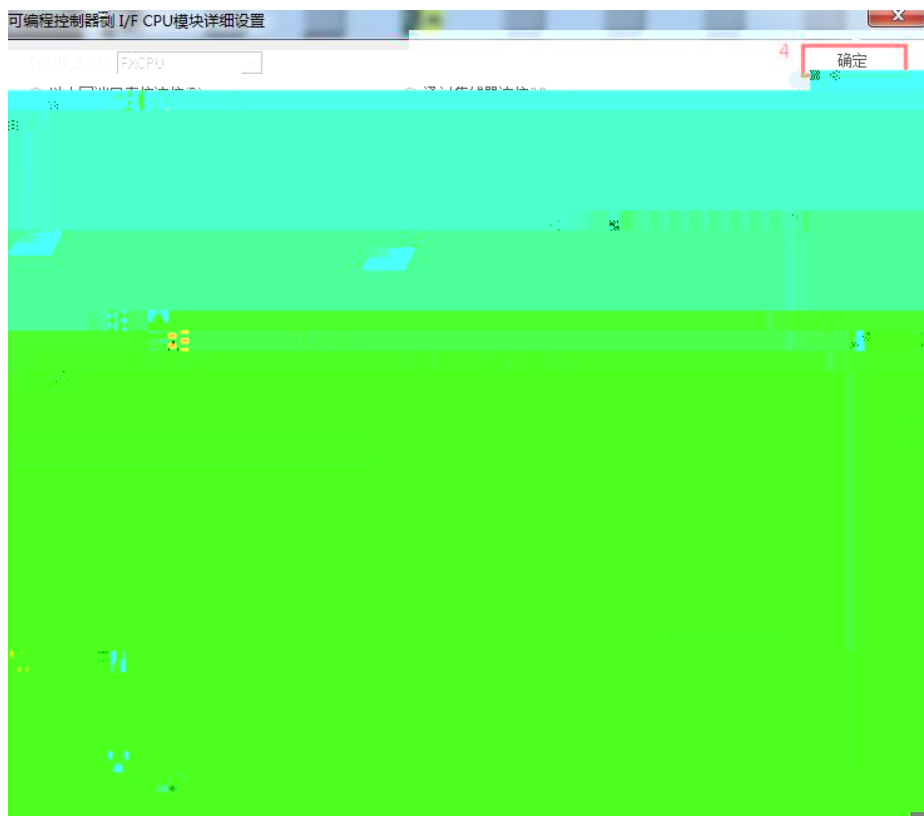
- | | | | | | | | |
|----|------------|------|------------|---|------------|----------|----------|
| | FX3G/3GC | FX3S | FX3U/FX3UC | 3 | FX | RVNet-FX | GXWorks2 |
| 1. | FX3UC | | | | | | |
| | FX3U/FX3UC | | | | Connection | | |



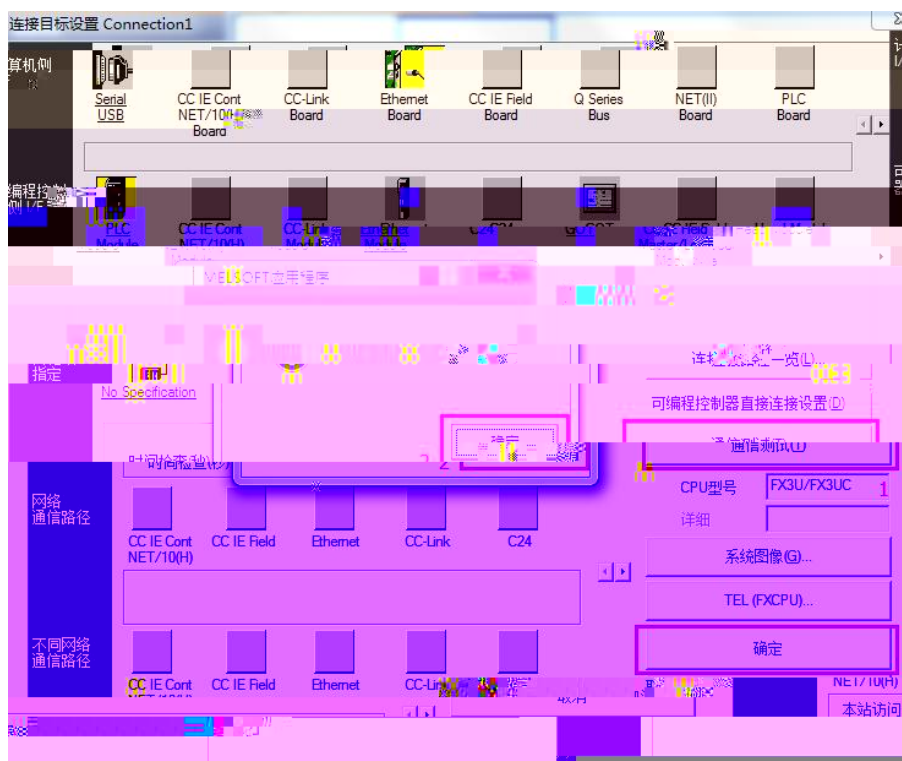
- | | | | | | | | |
|----|------------|--|--|--|---------------|--|--|
| 2. | | | | | EthernetBoard | | |
| | PLC Module | | | | | | |



- | | | | | | | | |
|----|--|--|--|--|----------|----------|-------|
| 3. | | | | | FXCPU(S) | RVNet-FX | FX3UC |
|----|--|--|--|--|----------|----------|-------|



4 IP FX3UCPU



5 PLC



4.1.2 FX1N/1NC FX2N/2NC FX1S

| | | | | | | | |
|----------|-------|-------|---|------|------|------|-------|
| | | FXCPU | | FX1N | FX2N | FX1S | FXPLC |
| RVNet-FX | GXV2N | b | X | | | | |

GOT



3

IP

4

IP

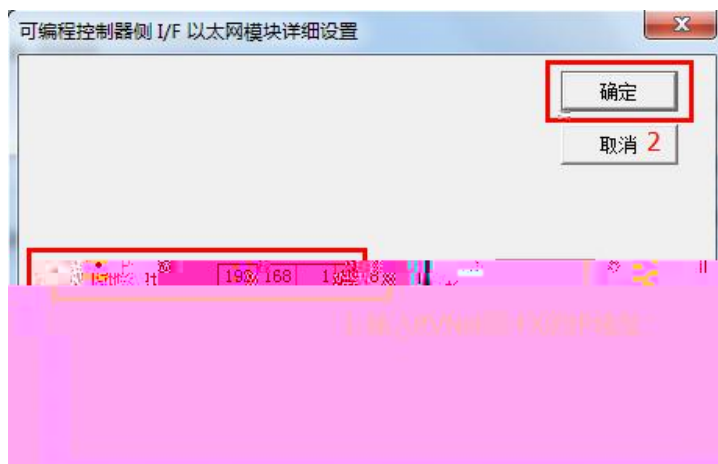
FX2NCCPU



5

PLC

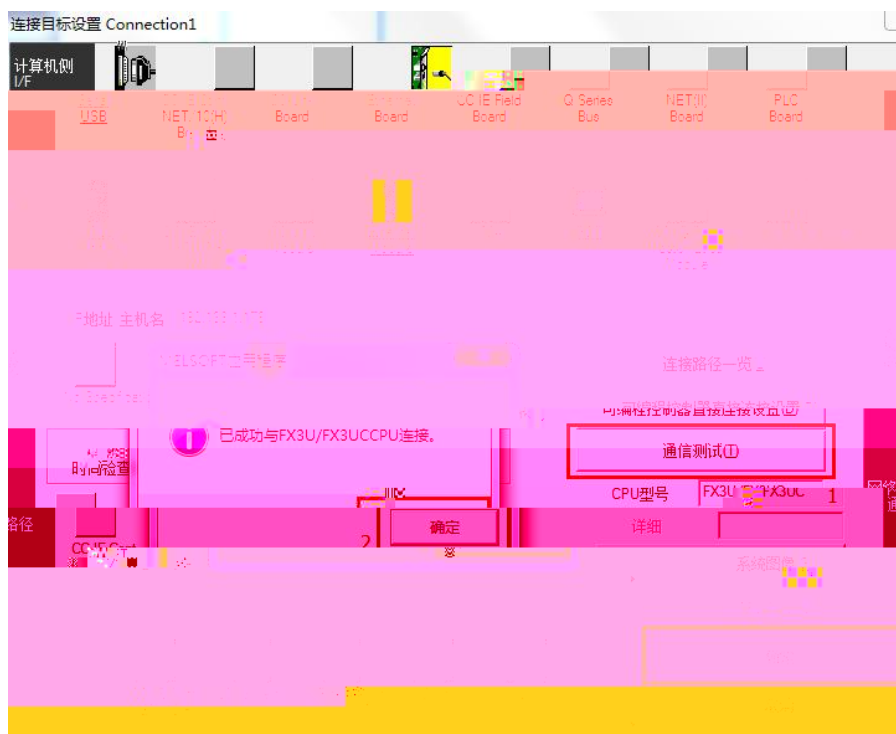




4

IP

FX3UCCPU

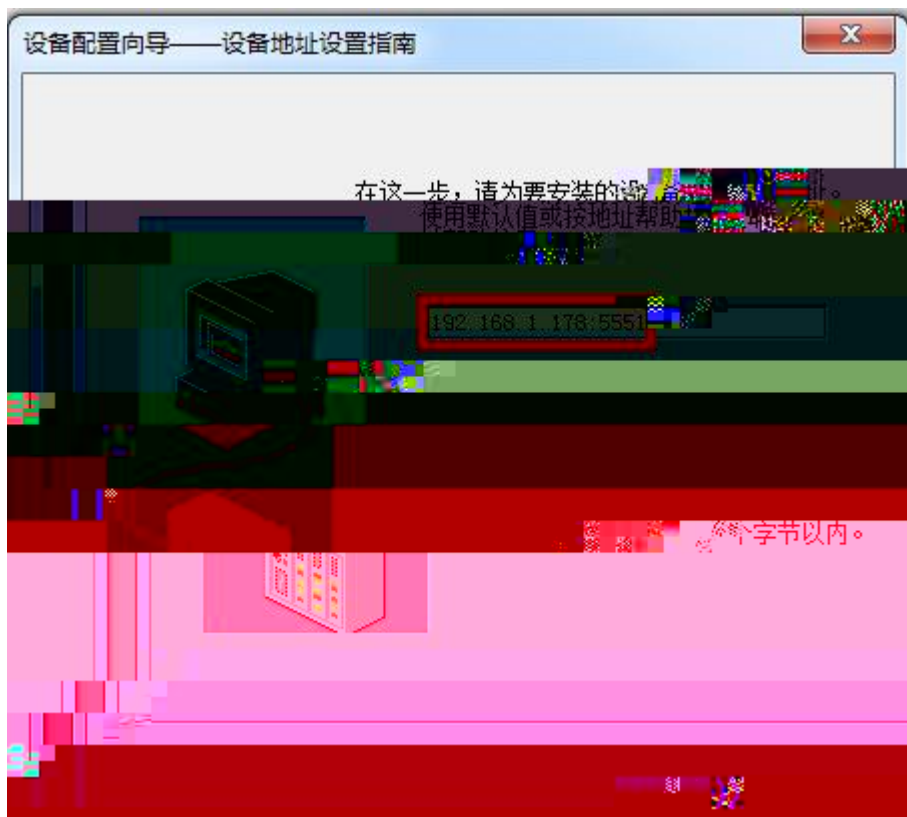


5

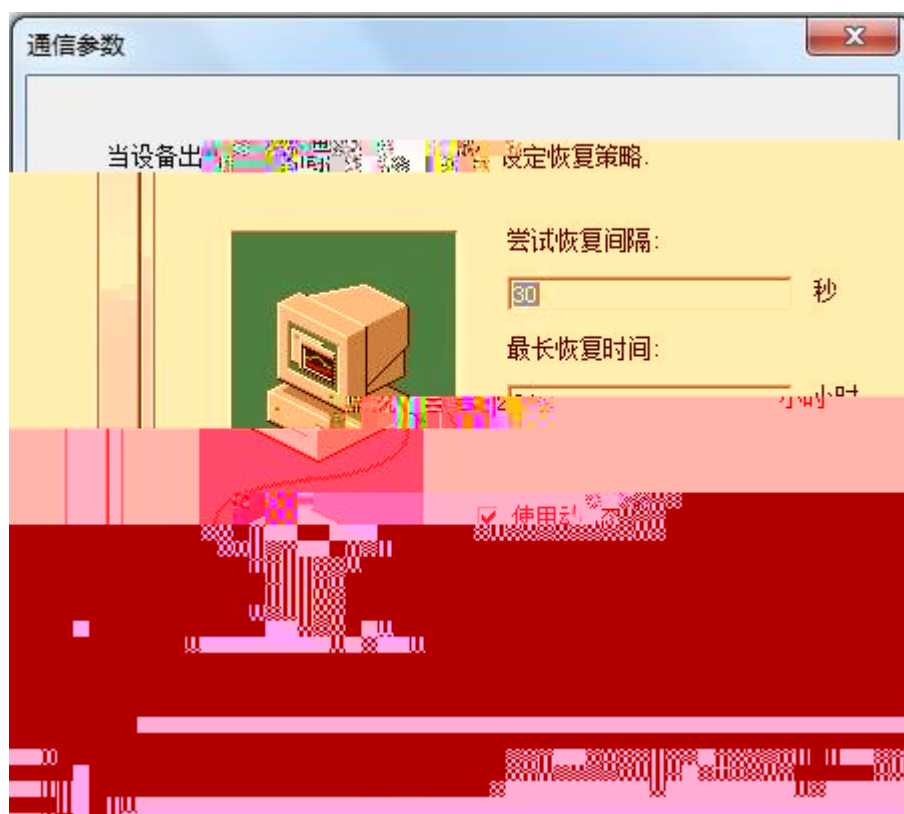
PLC



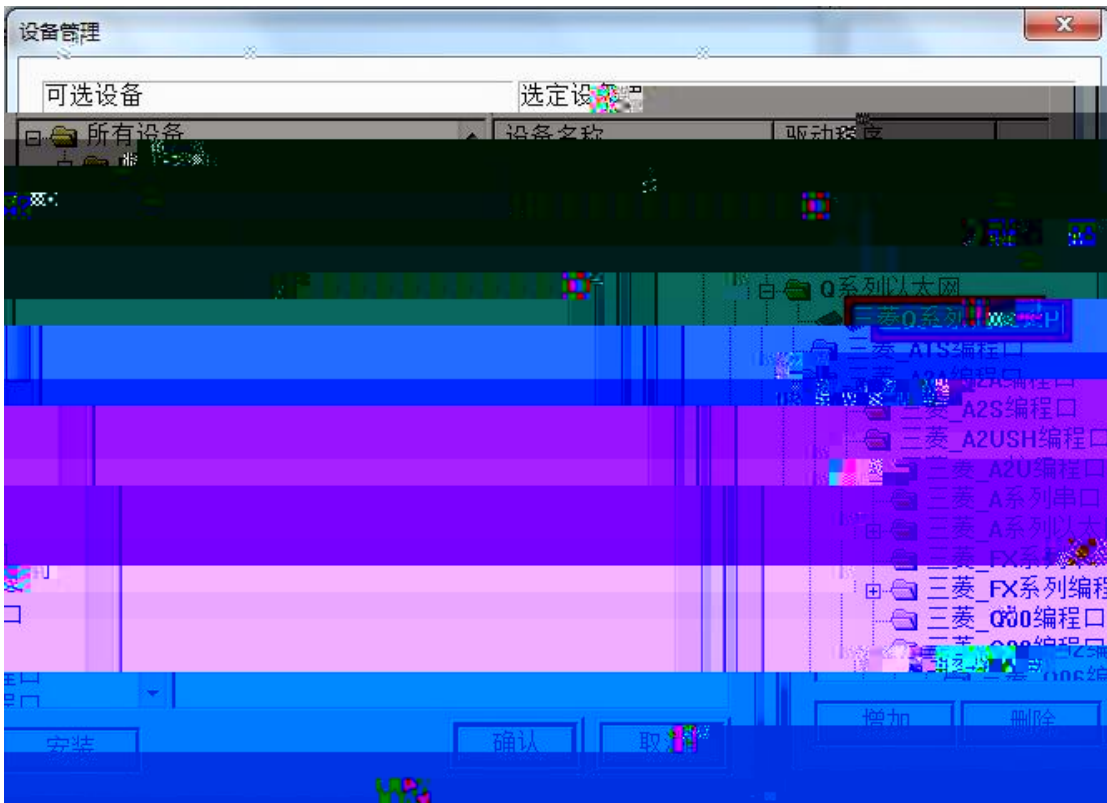
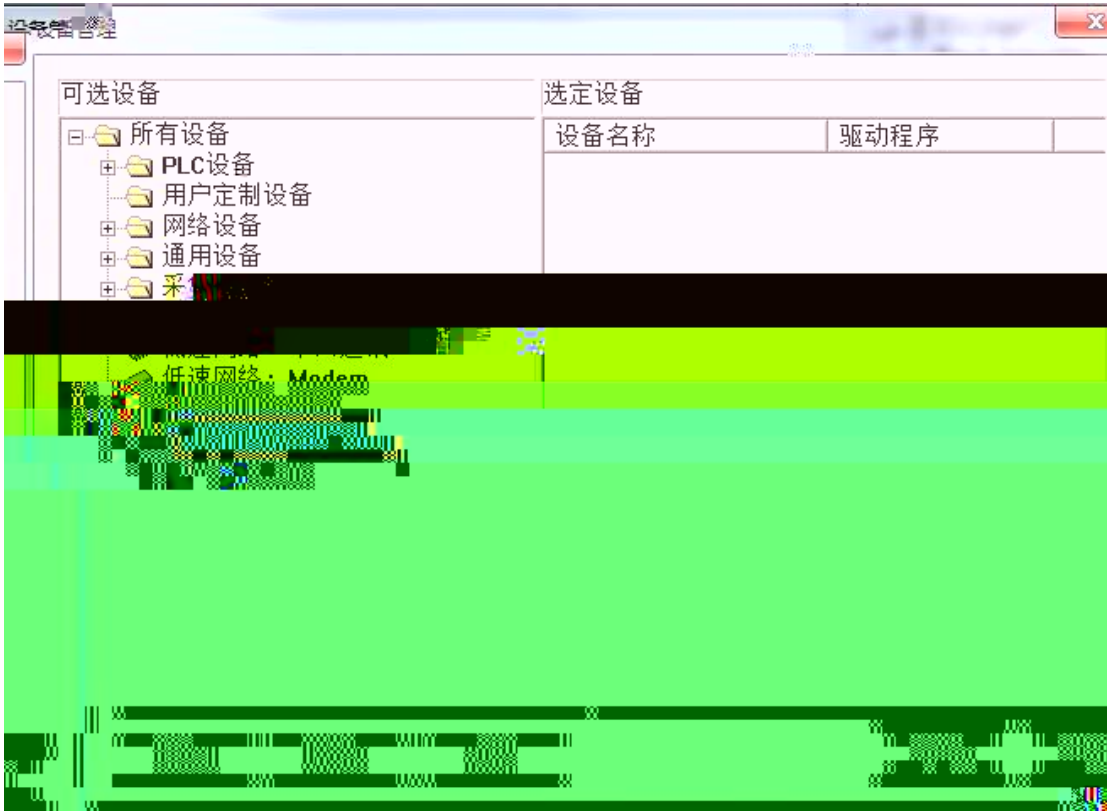
4. RVNet-FX IP PLC 5551



5.



4.3 RVNet-FX MCGS

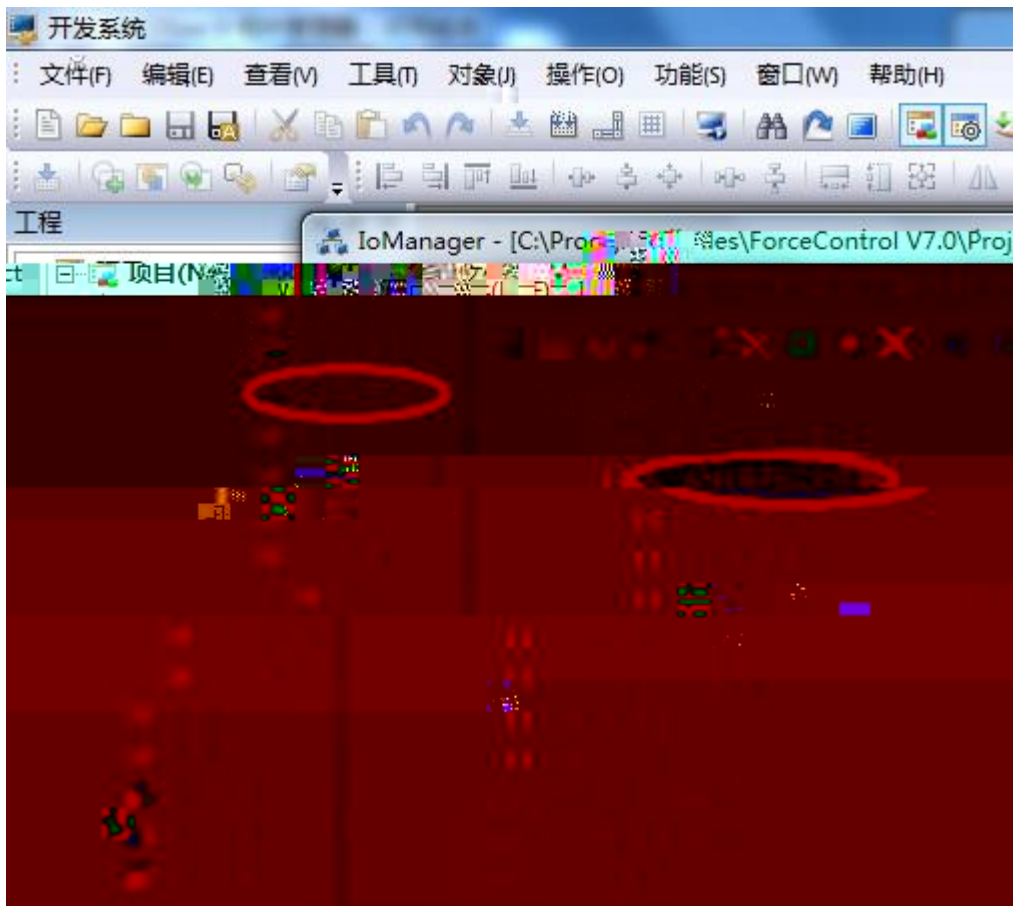


| | | | | | | |
|----|--------|----|--------|----------|----|-------|
| 2 | TCP/IP | 0- | TCP/IP | | | 1-TCP |
| IP | | IP | IP | RVNet-FX | IP | |
| | 5551 | | | | | |

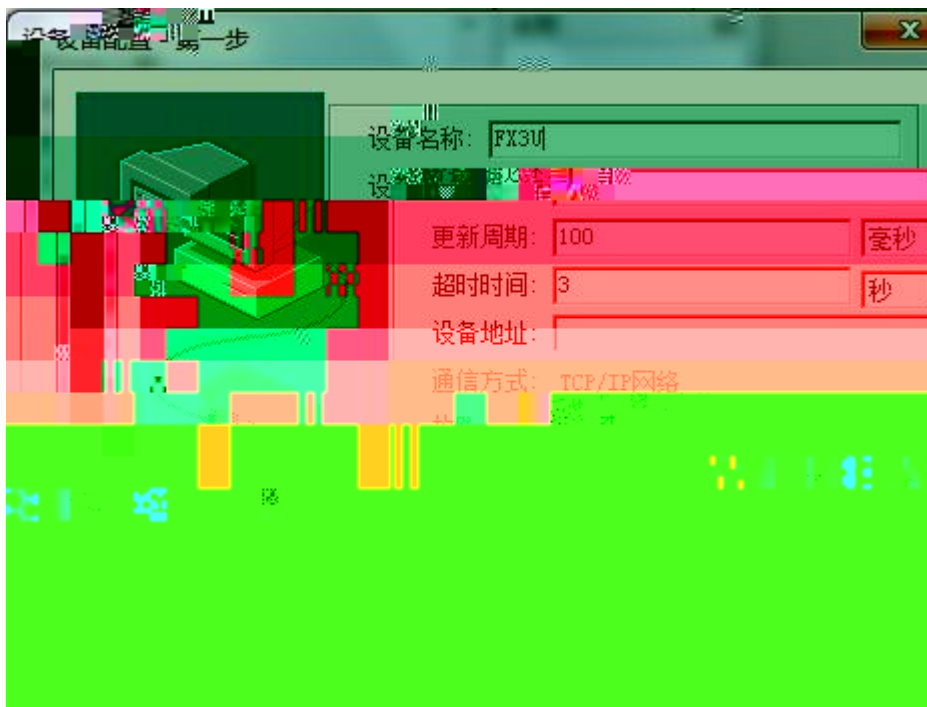


4.4 RVNet-FX

1. IO PLC MITSUBISHI -A
ANA



2



3

IP

RVNet-FX

IP

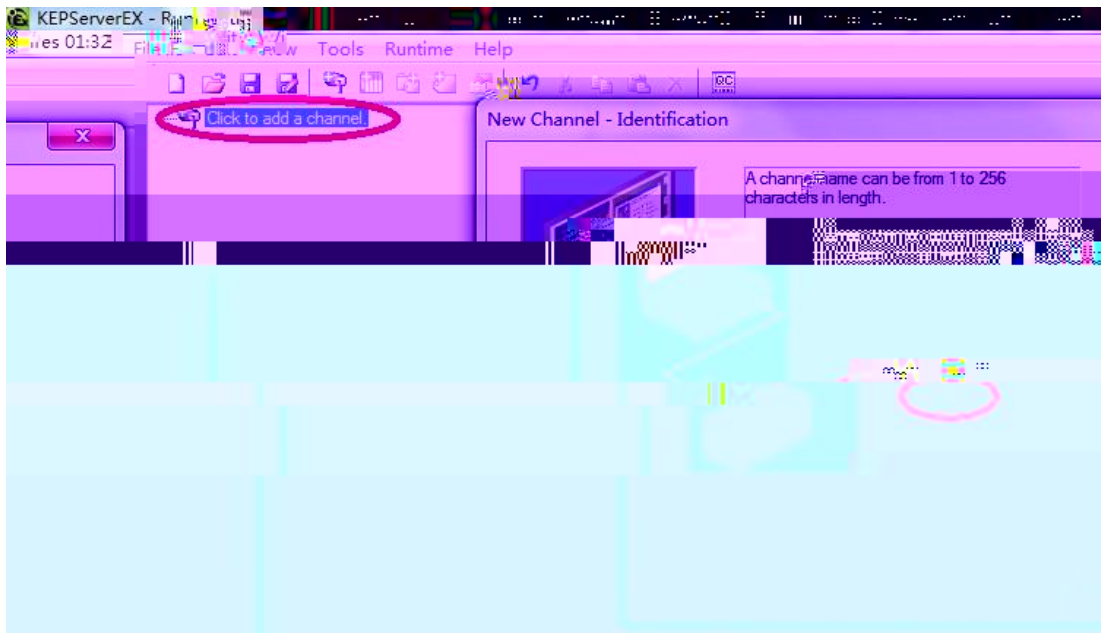


4. BINARY

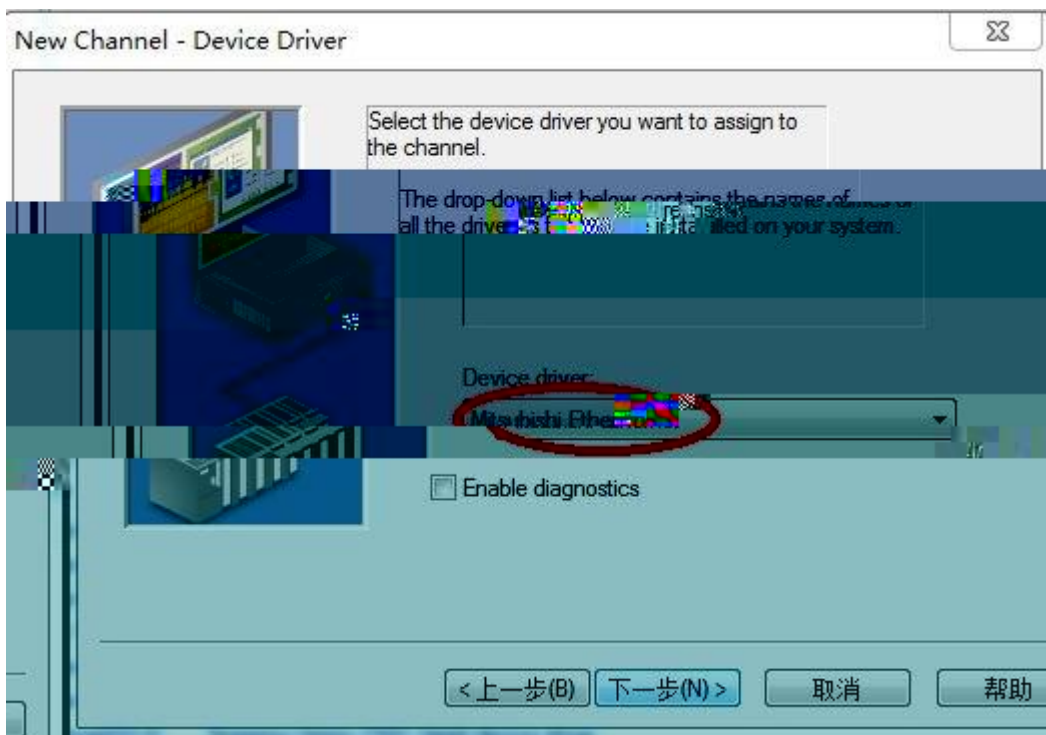


4.5 RVNet-FX Keware opc

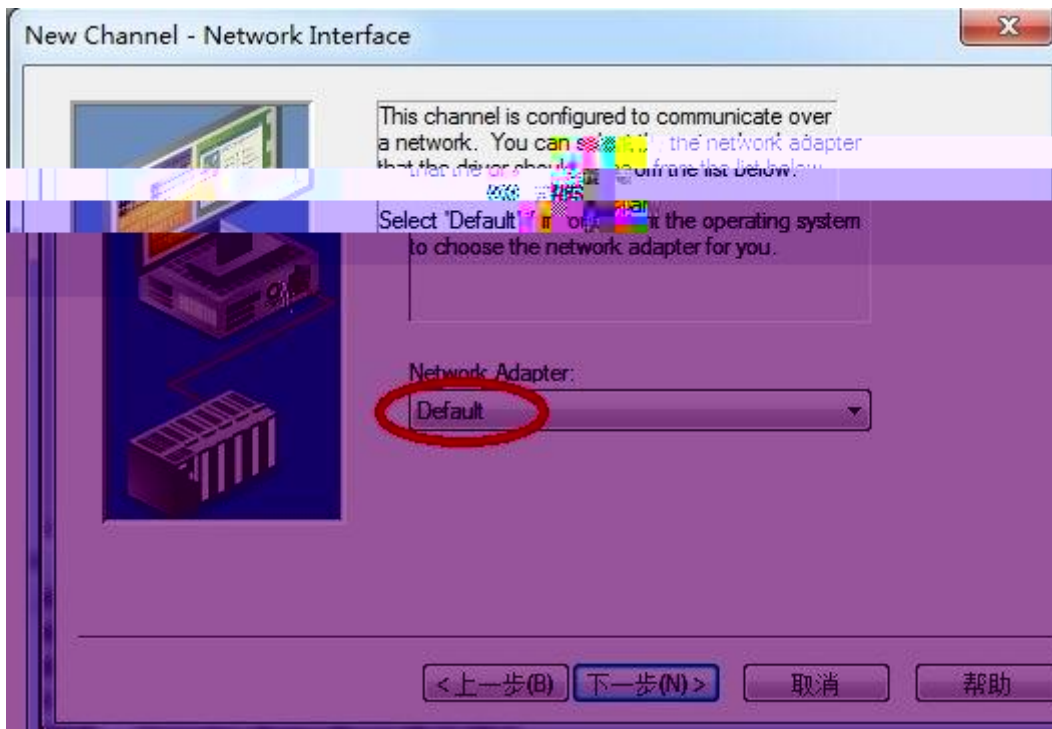
1. KEPServerEX Click to add a channel



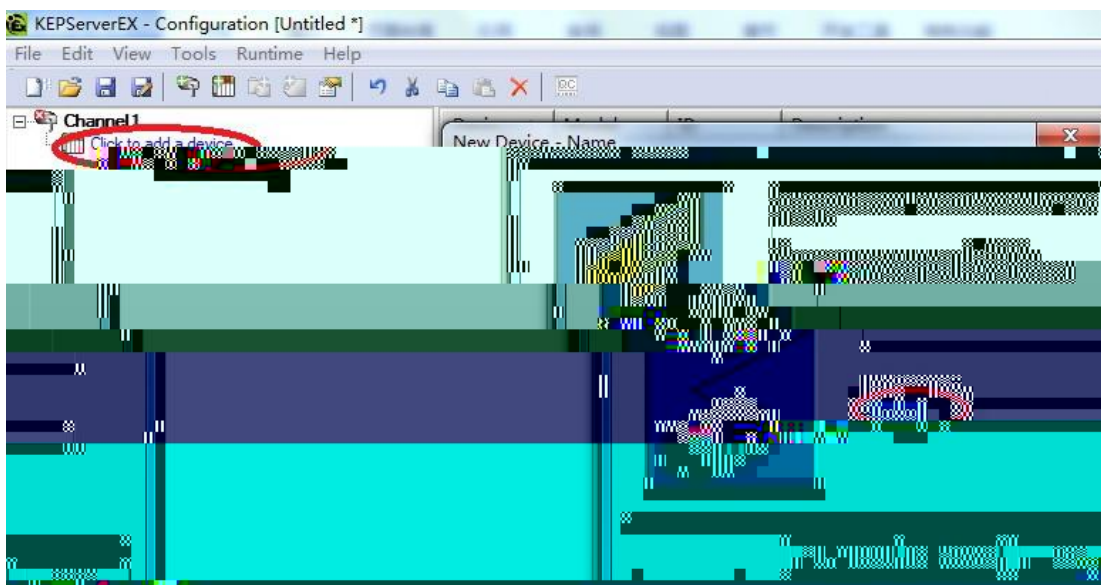
2 Mitsubishi Ethernet



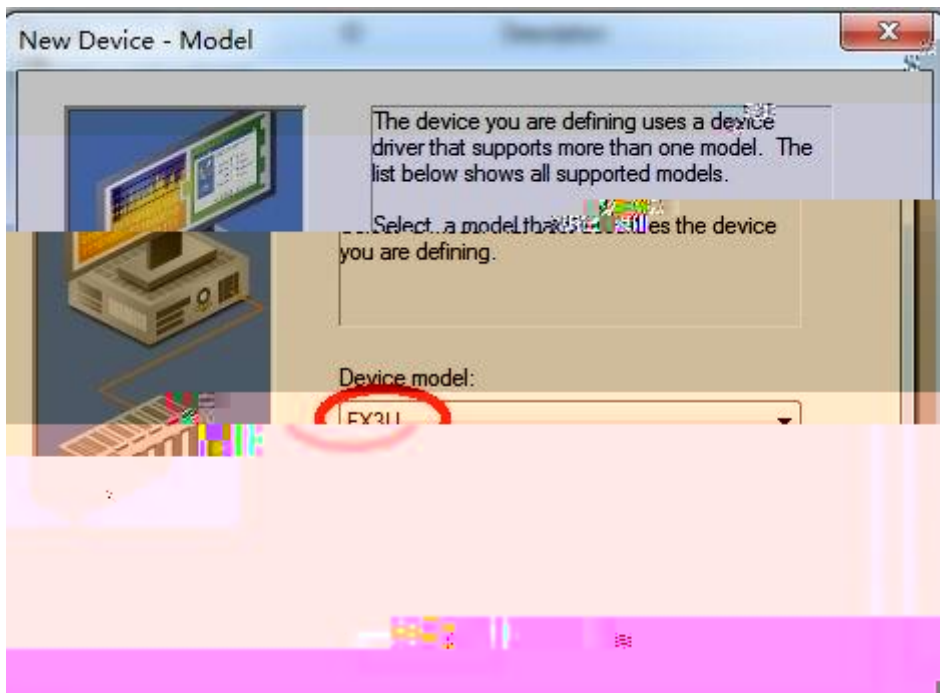
3 "Default"



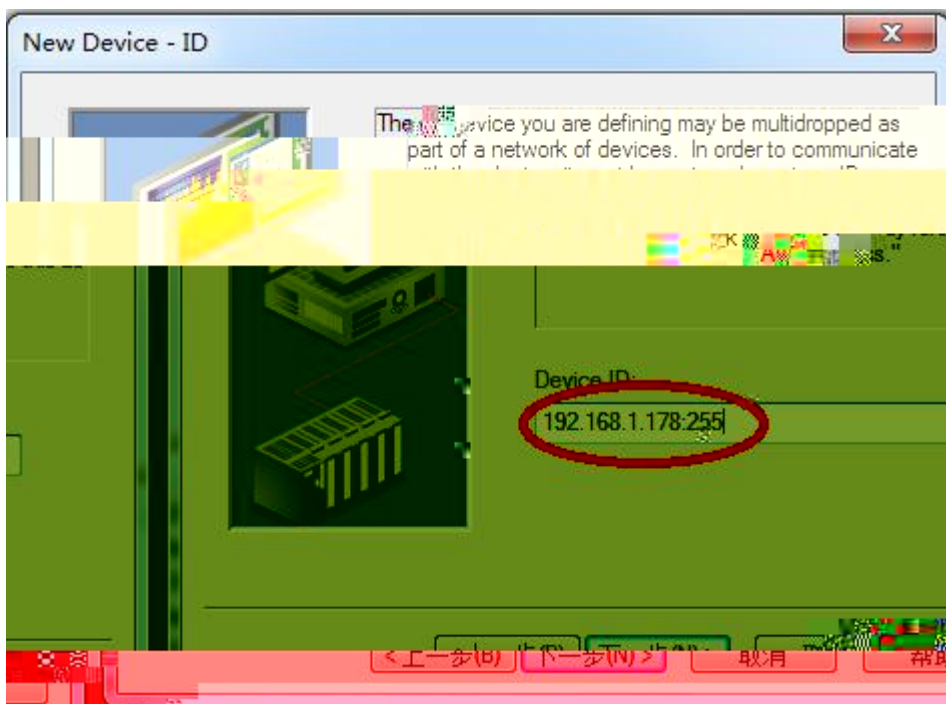
4 click to add a device ,



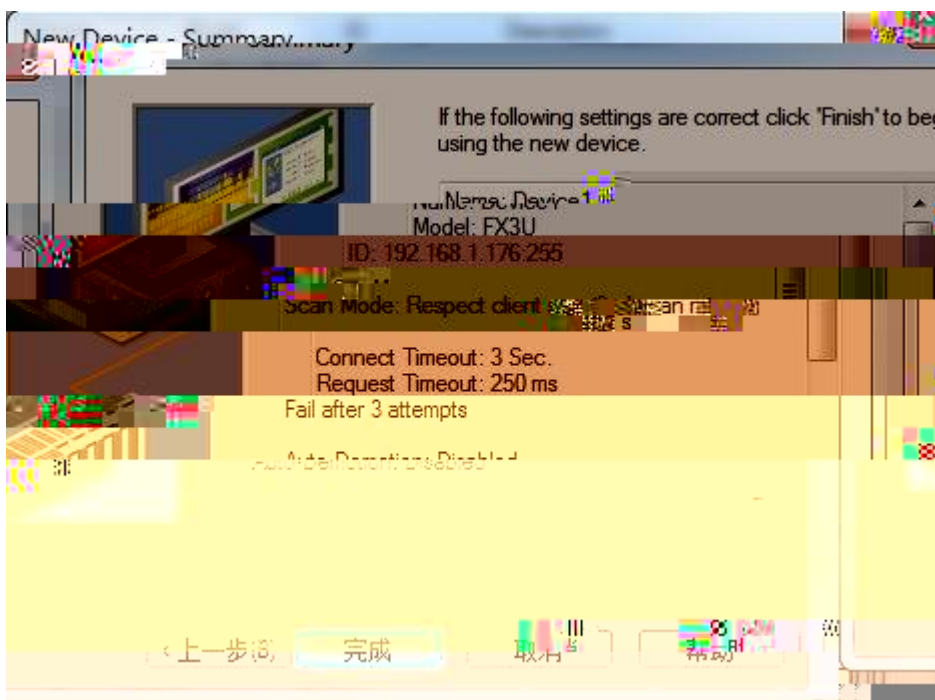
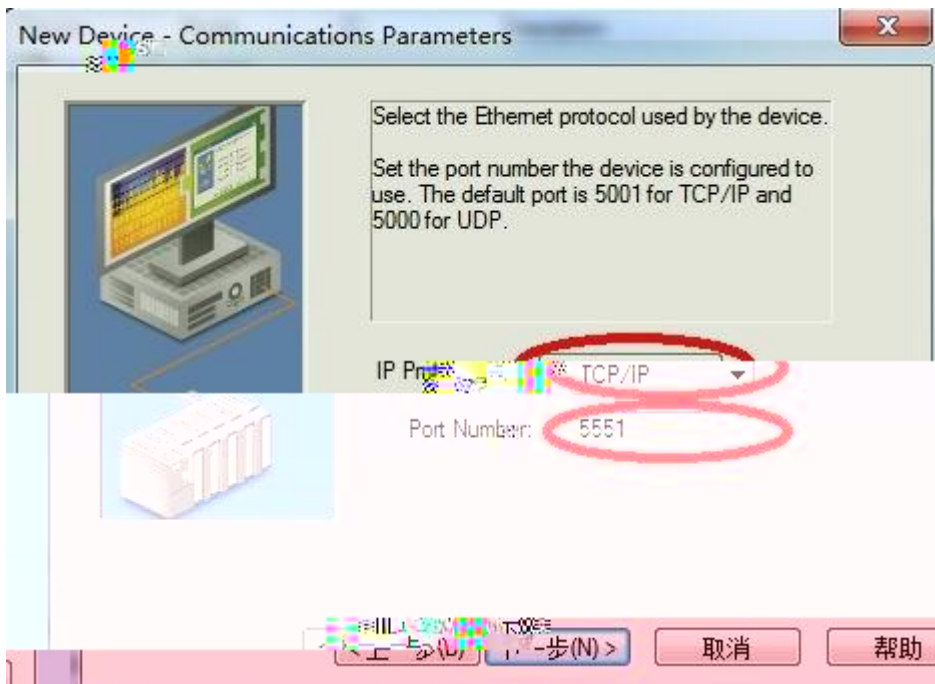
5 PLC



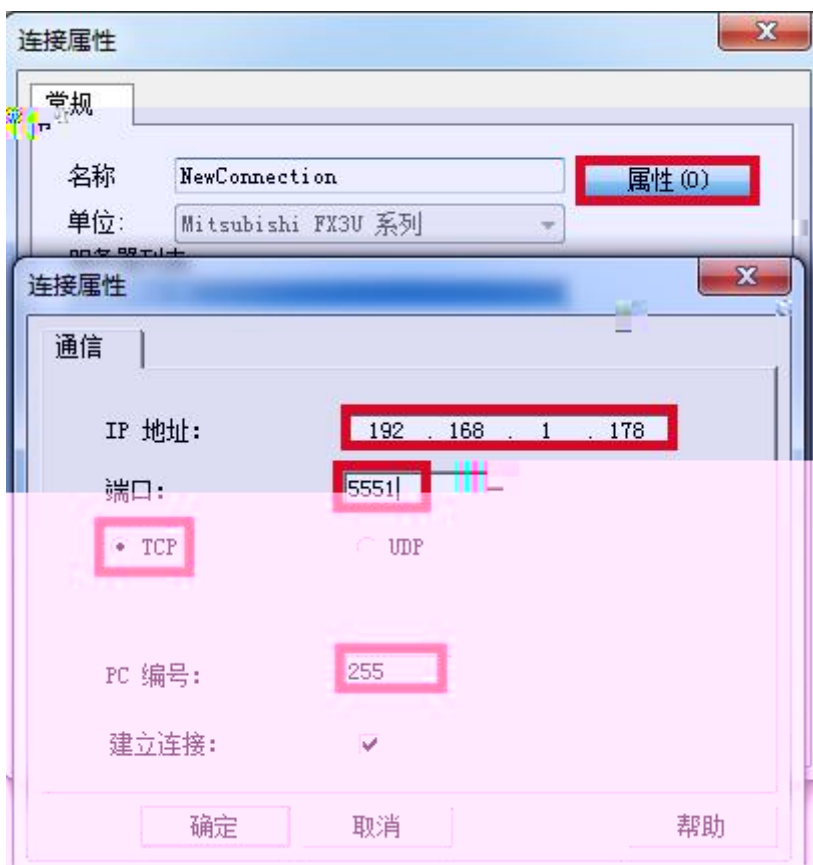
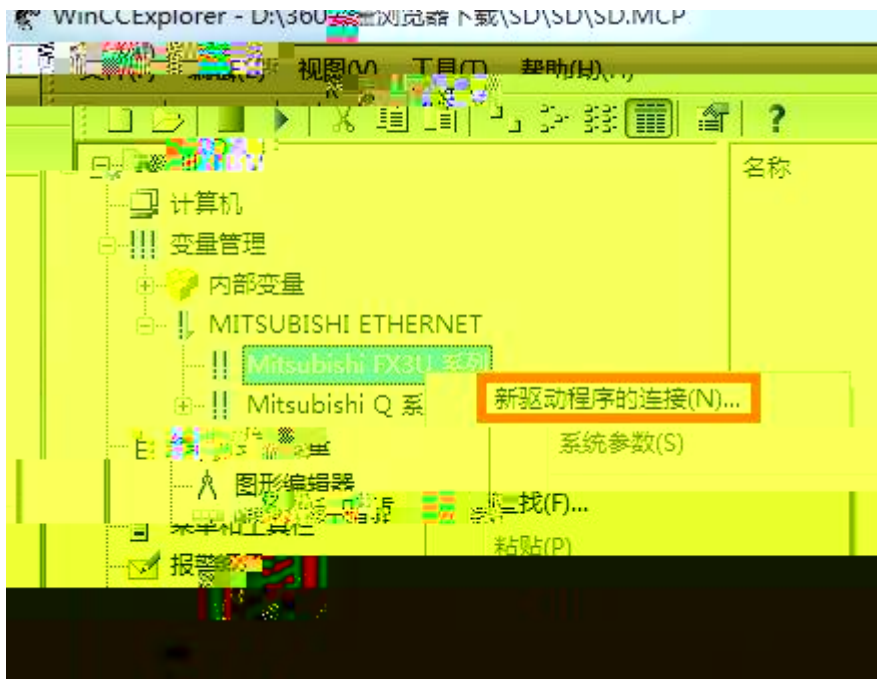
6. IP 255 255



7.IP "TCP/IP" 5551



4.6 RVNet-FX WINCC



5. ModbusTCP

| | | | | | | | | | | | | |
|-----|-----|-----|-----|-----|--|--|--|--|--|--|--|--|
| | | | | | | | | | | | | |
| 2x2 | 2x2 | 2x2 | 2x2 | 2x2 | | | | | | | | |

| Oqfdwu | HZ | RNE | | | | |
|--------|----|---------|--|------------------------|-------|----------|
| 222223 | | [2 | | [op ? 222223- o , :-p | | |
| 227223 | | O : 222 | | O : o ? 227223- o | | |
| 228223 | | V2 | | Vo ? 228223- o | HE3* | + |
| 229223 | | E2 | | Eo ? 229223- o | HE7* | + |
| 232223 | | O2 | | Oo ? 232223- o | | |
| 252223 | | U2 | | Uo ? 252223- o | | |
| 322223 | | Z2 | | Zop ? 322223- o , :-p | HE4* | + |
| 622223 | | V2 | | Vo ? 622223- o | | |
| 623223 | | E2 | | Eo ? 623223- o | HE5* | + |
| 623523 | | F : 222 | | F : o ? 623523- o | HE38* | + |
| 624223 | | F2 | | Fo ? 624223- o | HE8* | + |
| 642223 | | T2 | | To ? 642223- o | | |
| | | | | | | HE3<734 |
| | | | | | | HE7<3 |
| | | | | | | 734 |
| | | | | | | HE5<347 |
| | | | | | | HE38<347 |
| | | | | | | HE8<3 |

m Y n Y Y37 m=3, n=7; Y112 m=11, n=2
m M 8000 M812 m=212
m X n Y X37: m=3, n=7; X111: m=11, n=7;
m D 8000 M8120 m=120
R FX3U R PLC Modbus 6

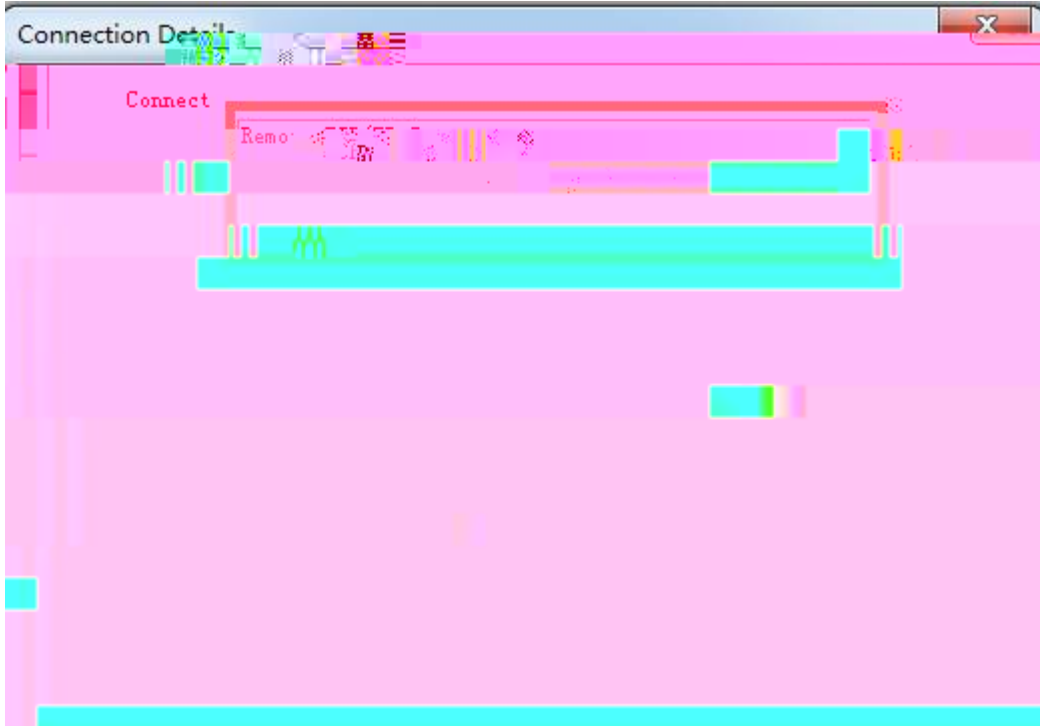
^ ^

o q fuecp4aetltct

30 Oq uecp54

40 qppg kqplEqppgev Tg o qvg VERIKR Ugtxgt TXPgv/HZ KR Ugtxkeg

724] 3



3

50 OqfUec3 Fgxkeg KF RNE 3 25<JQNFKPI TGIKUVGT

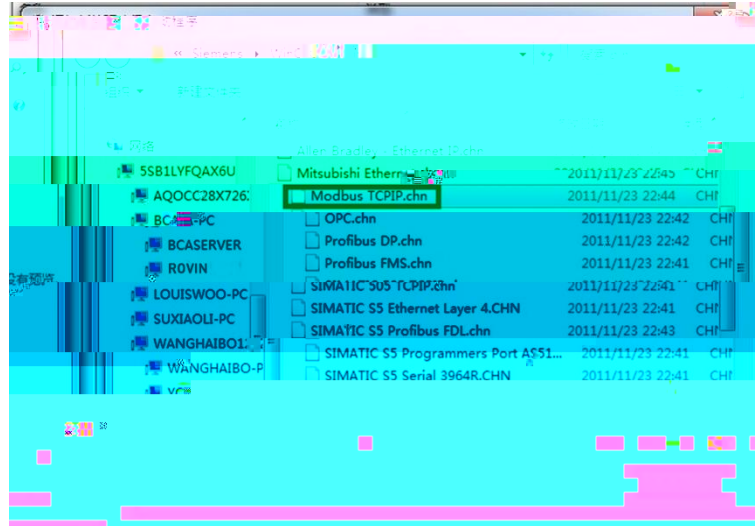
Cfftguu ? 3523 Ngpivj ? 322

60 6 3523 6 3622 38 HZ RNE F:222

F:322

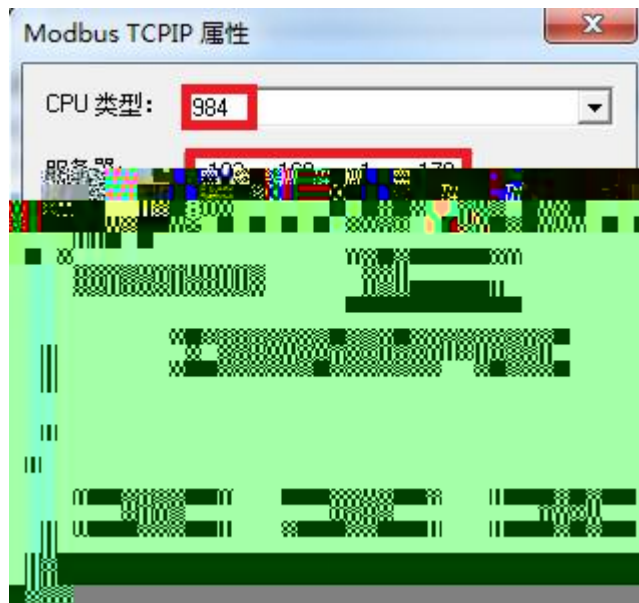
5.1 WINCC ModbusTCP RVNet-FX

1. Wincc
“Modbus TCPIP.chn”



2. “Modbus TCPIP/IP
CPU

#1” “ ” “ ”
984 “ ” RVNet-FX IP ,



3. “ ”
“ ” “4x”

DO “ ”

“4x”

VOE
s e

7.

2755

250101

0531-88689022

0531-88689022

111

266107

0532-68894021 83029299

0532-83029299

18753243991 garywei@dingtalk.com

www.roviniot.com

