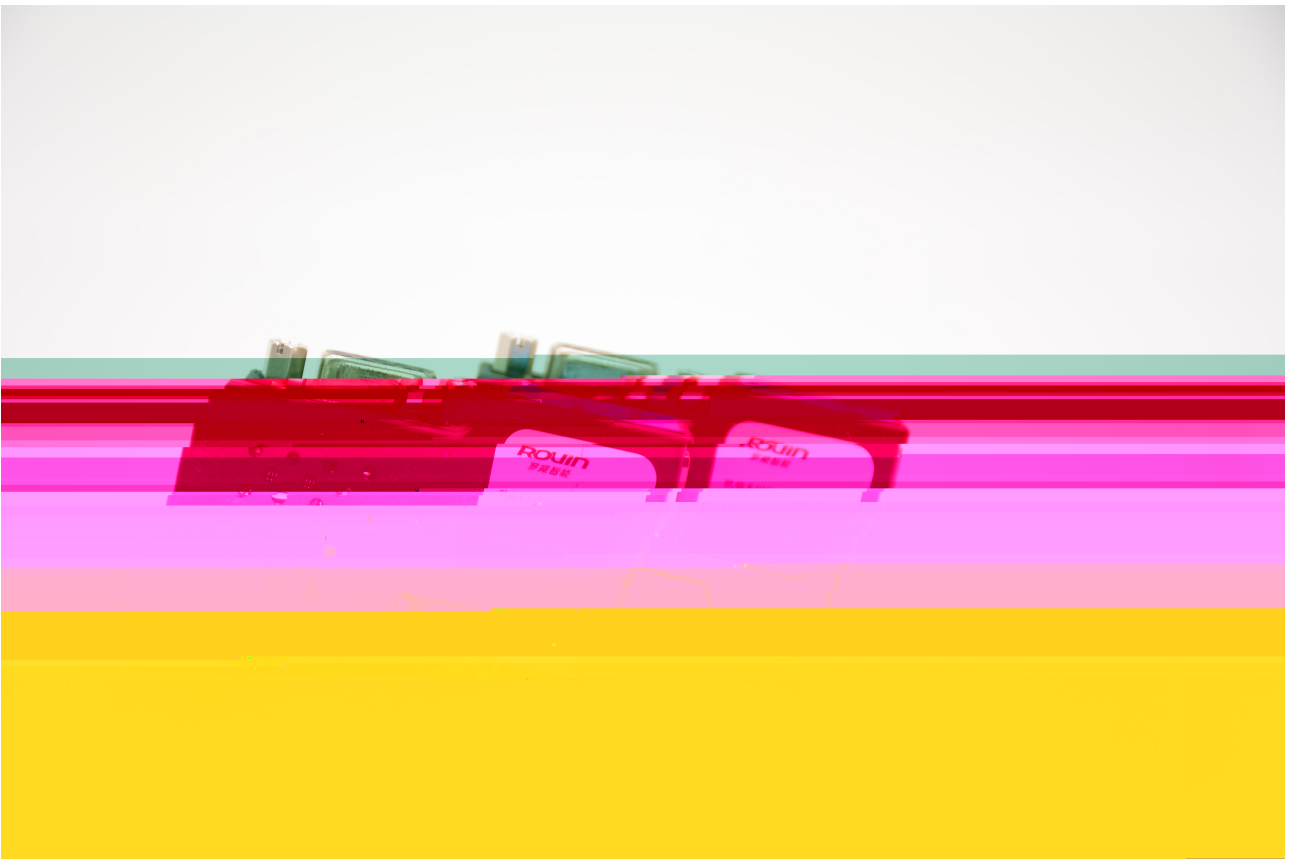


---

**ROUIN**

7> D@7





K

---

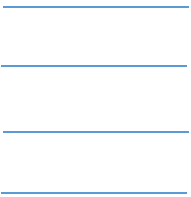
---

|

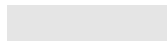
---

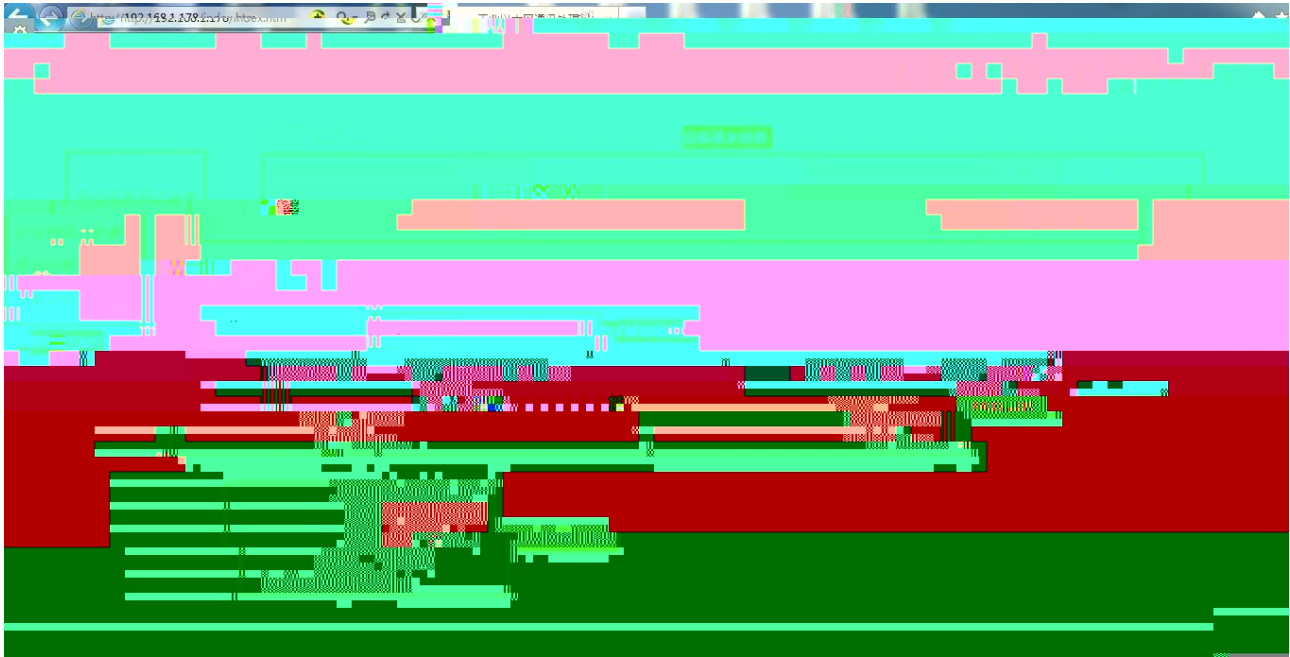
---

1







工业以太网通讯处理器 RVNet-CP

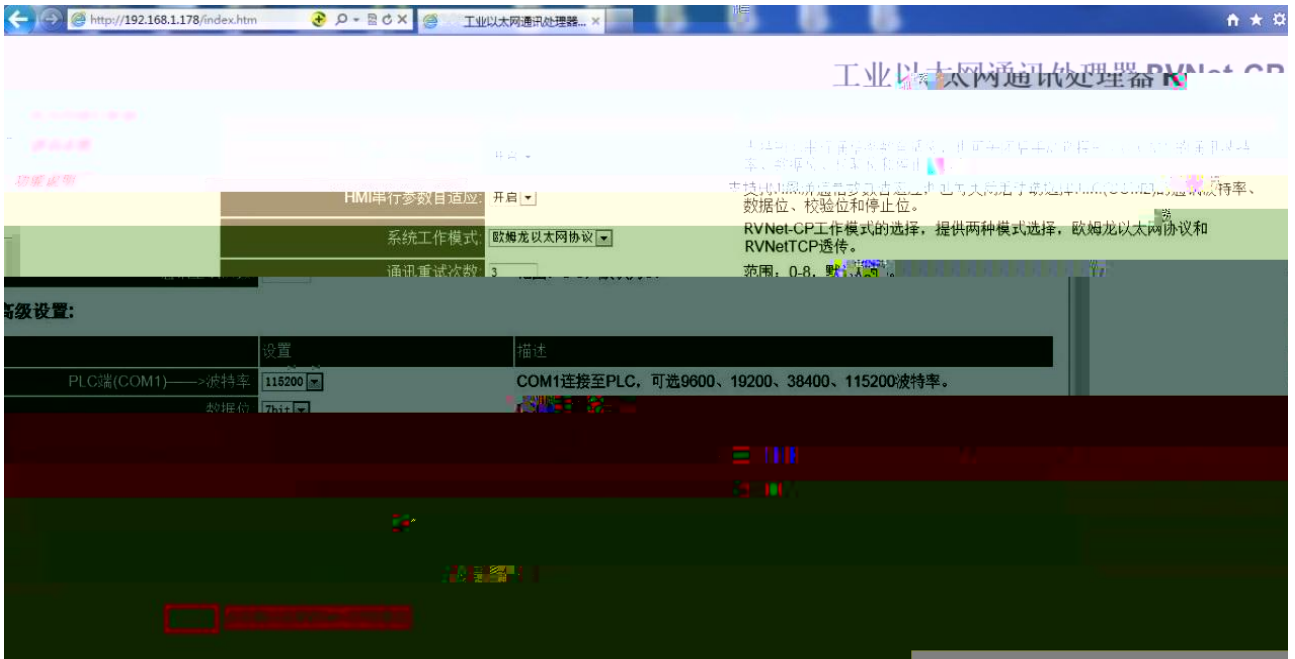
HMI串行参数自适应: 开启

系统工作模式: 欧姆龙以太网协议

通讯重试次数: 3

高级设置:

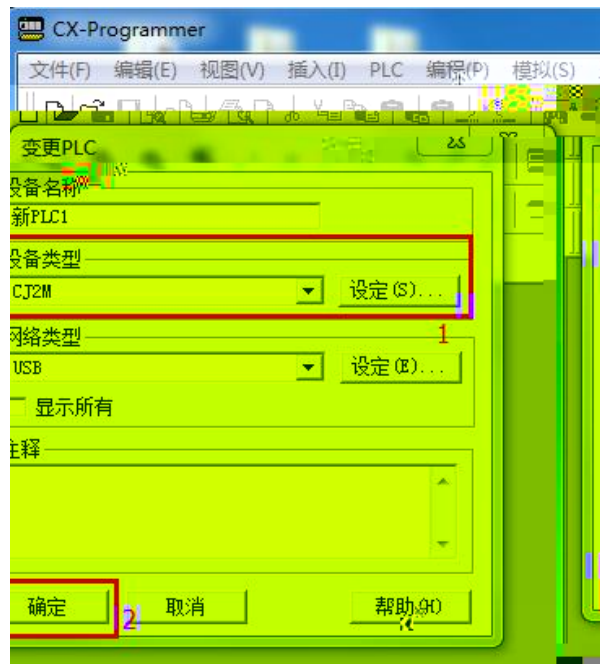
设置	描述
PLC端(COM1)——>波特率: 115200	COM1连接至PLC, 可选9600、19200、38400、115200波特率。
数据位: 8	



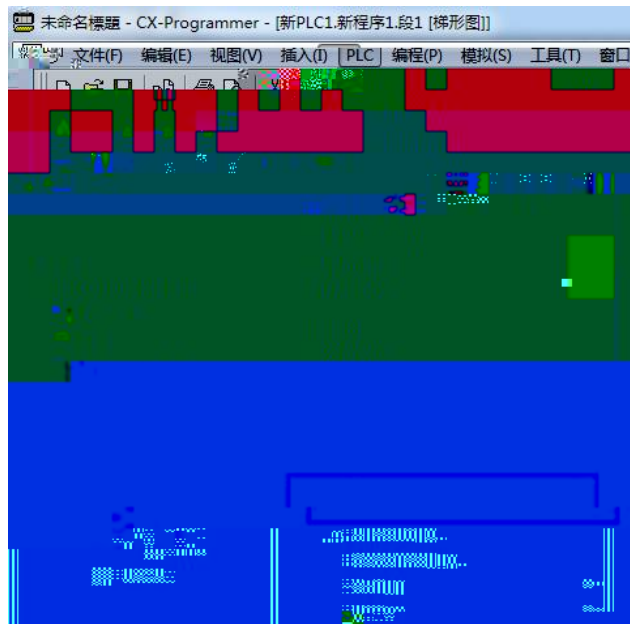


14p

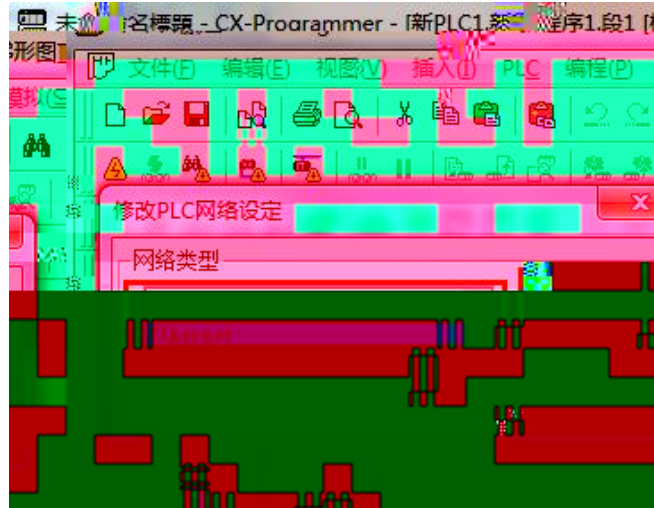
7L! Dfc[ UfaaYf



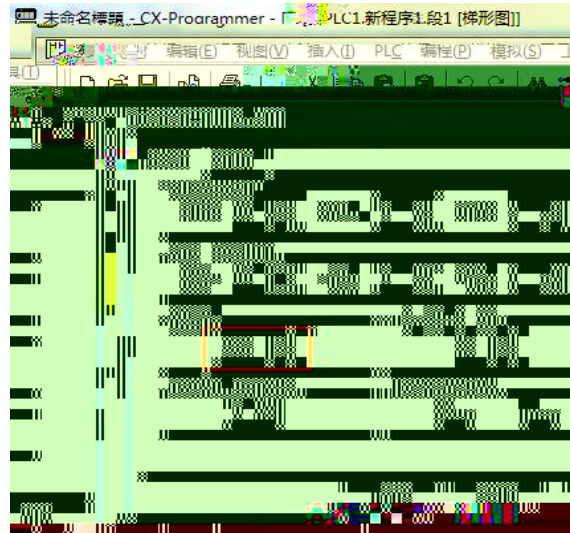
D@7



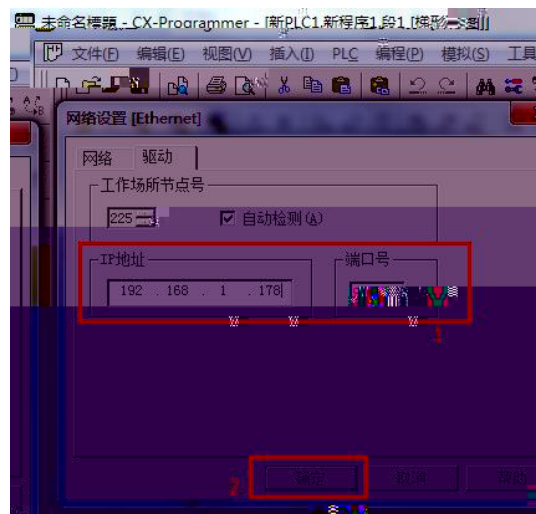
9h\YfbYh

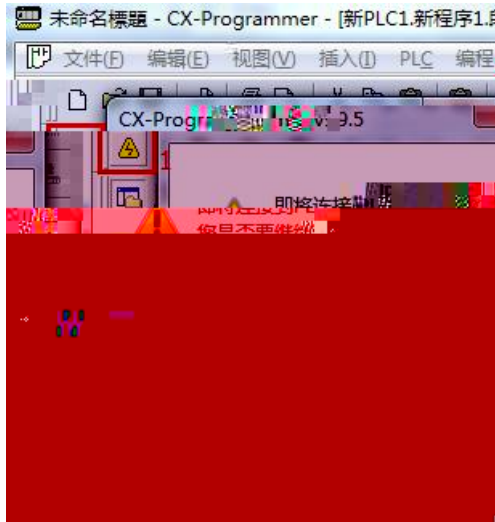


)( \$



FJBYh! 7> =D

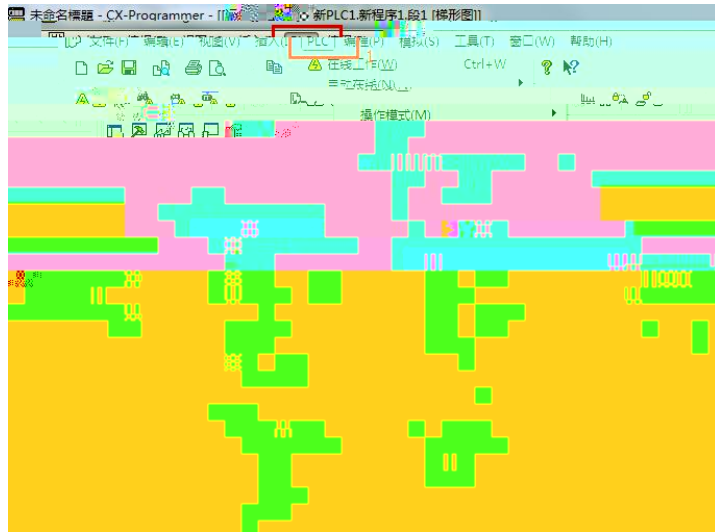




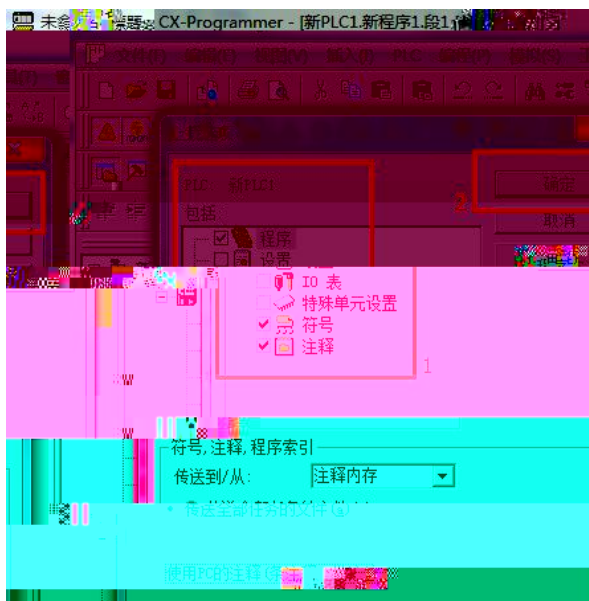
D@7

D@7

D@7



D@7



D@7

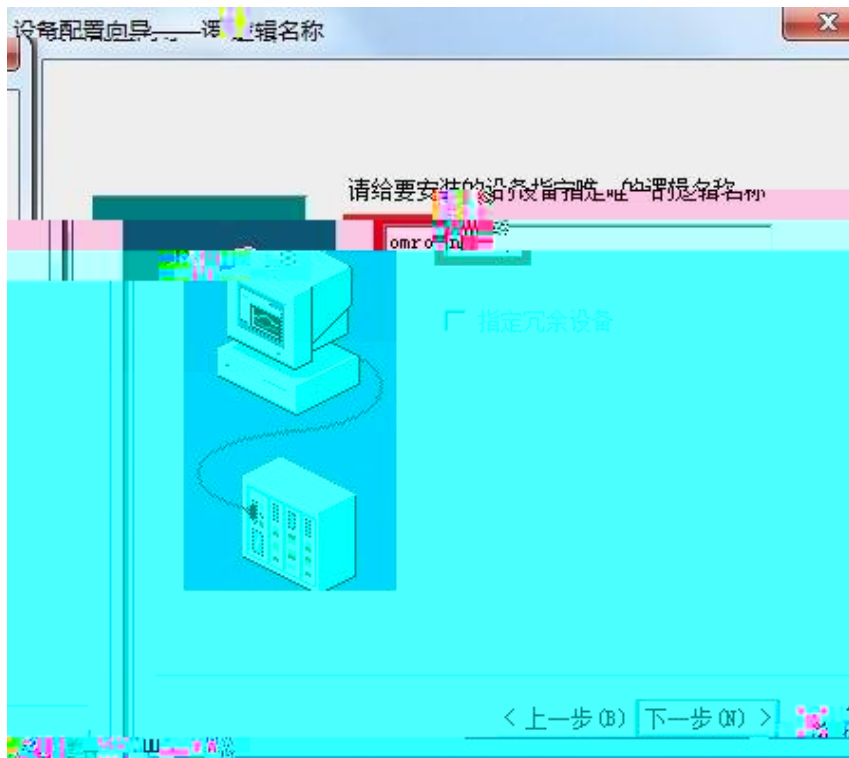
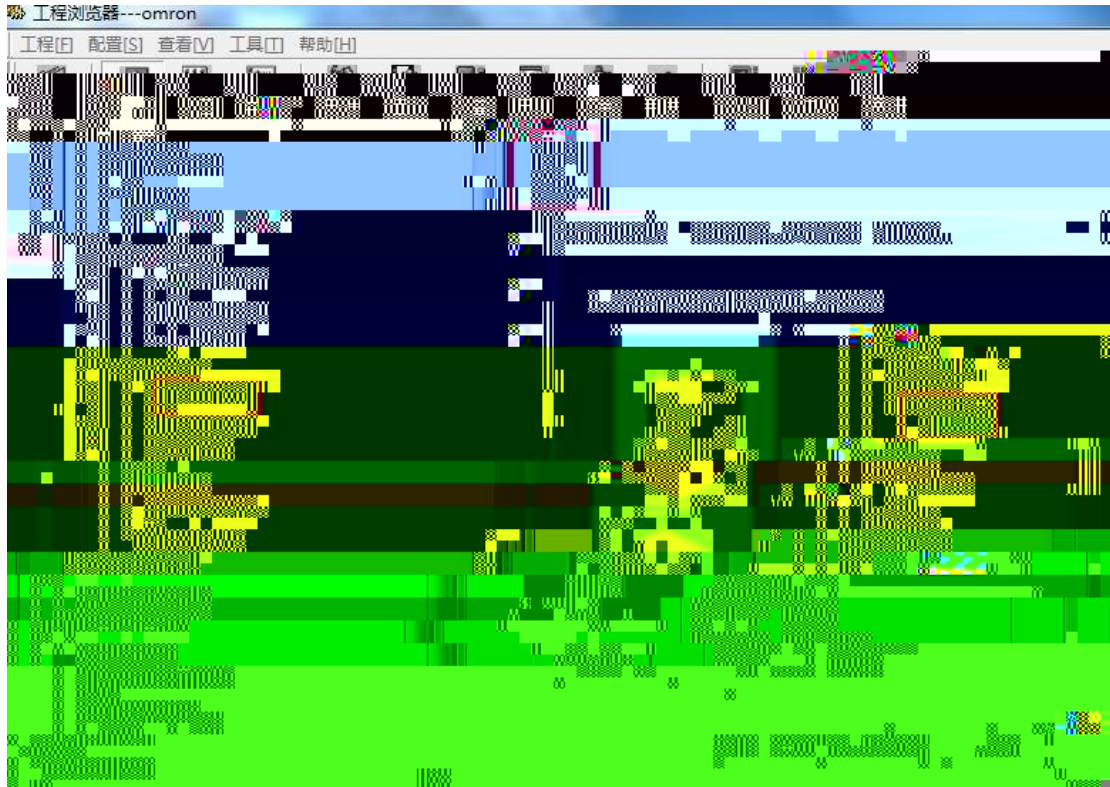
†

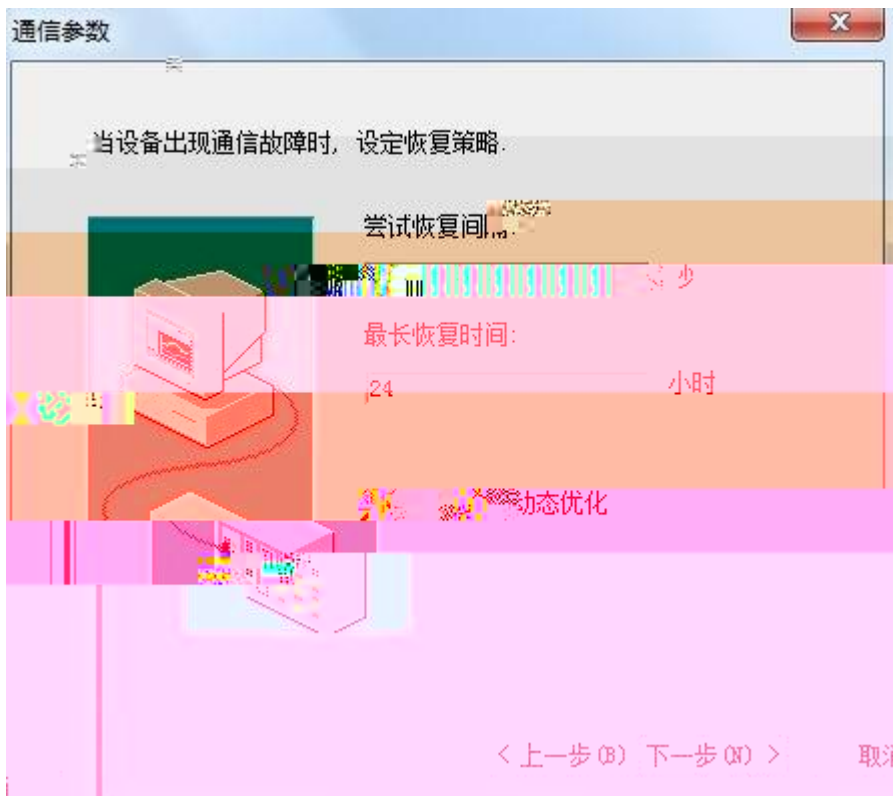
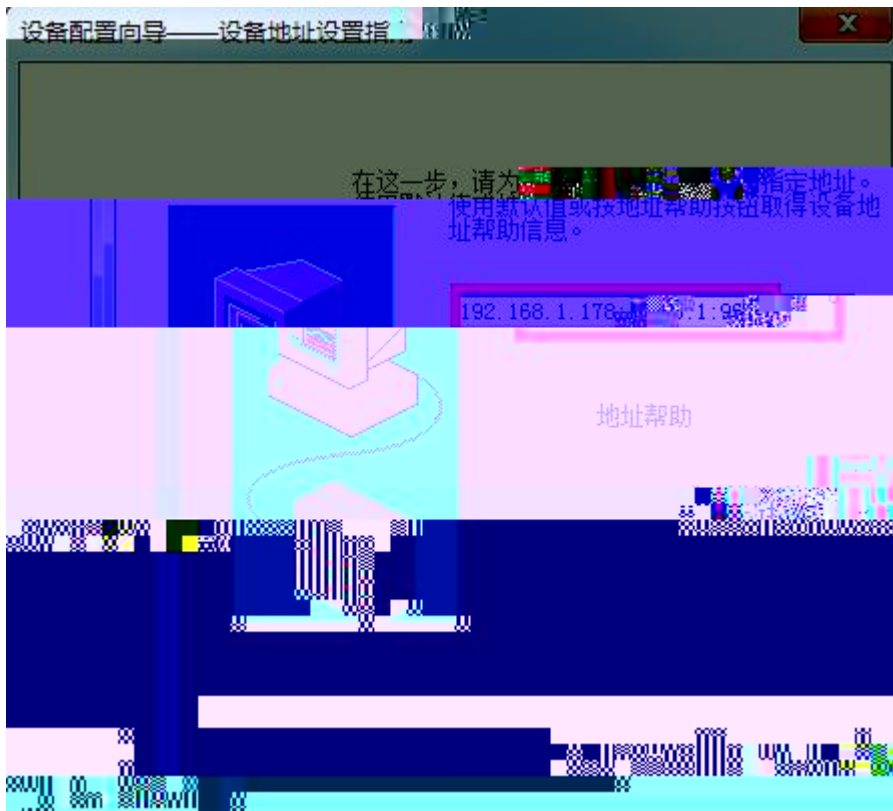
”

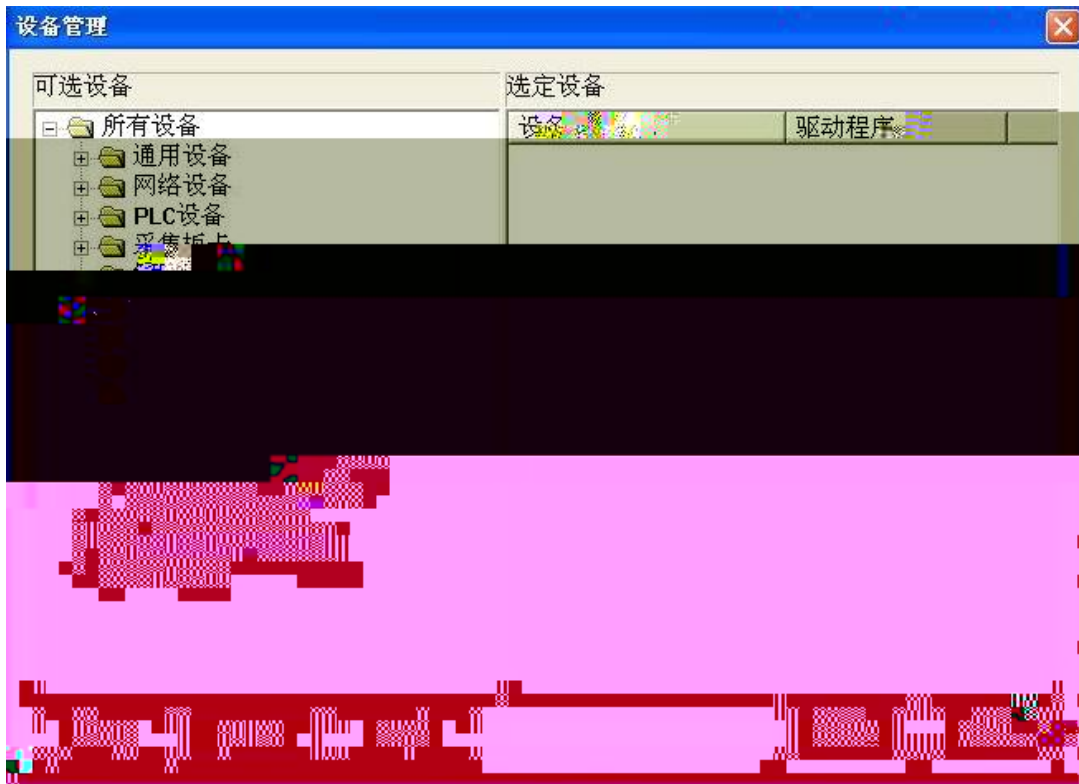
€ €

d

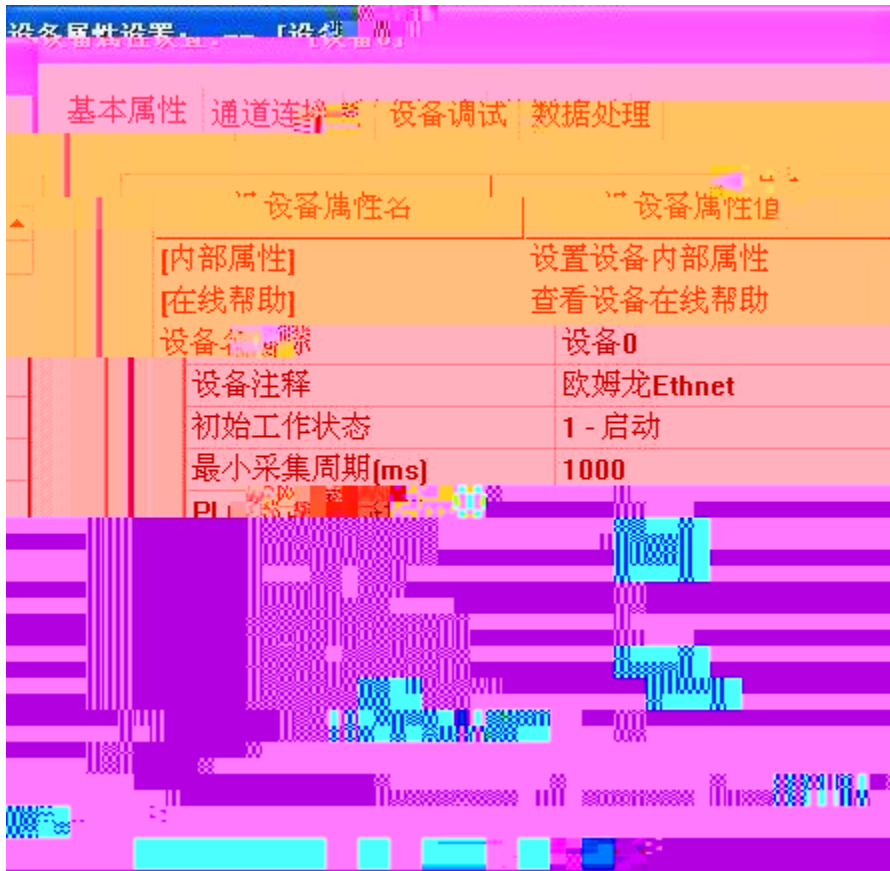
©

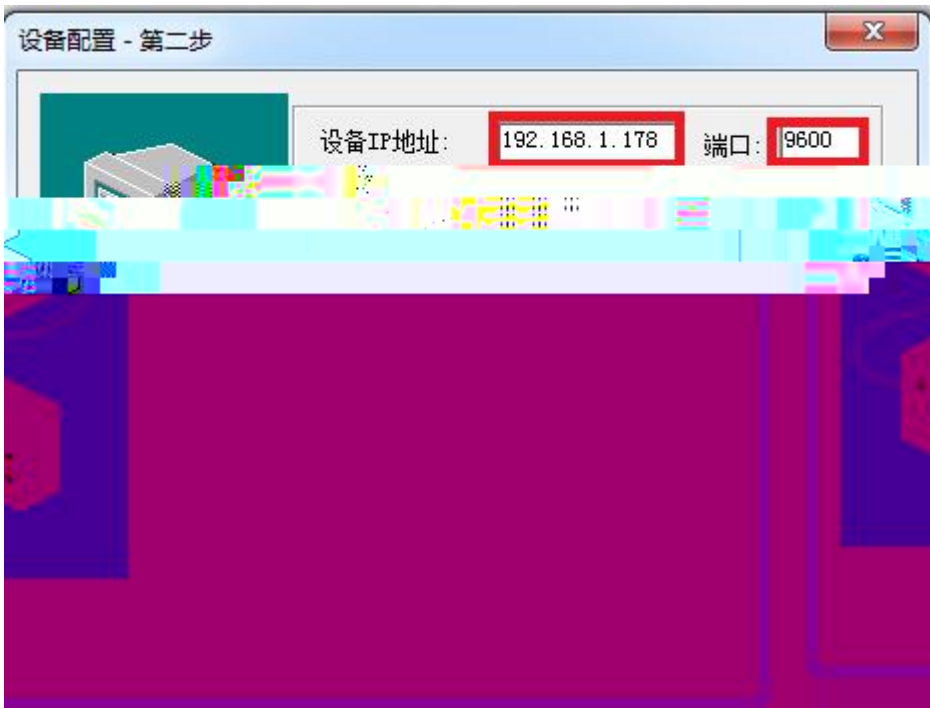
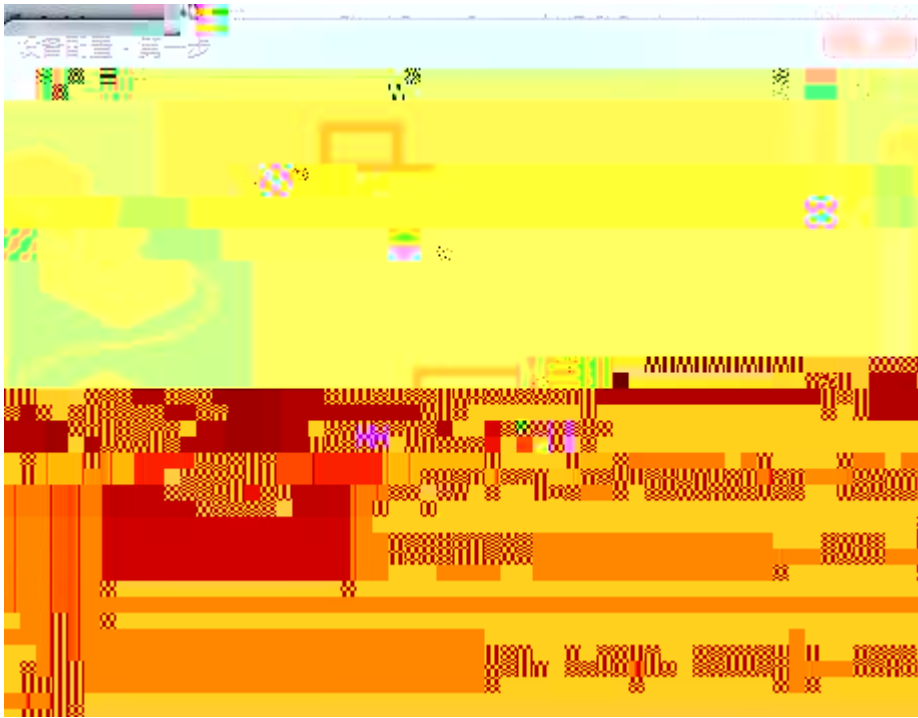


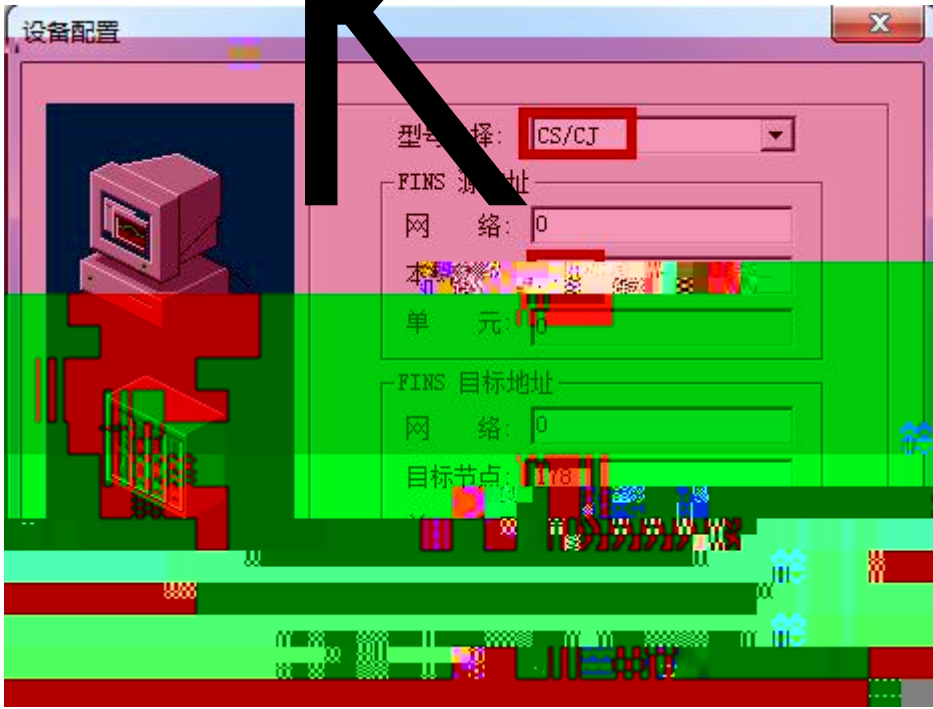








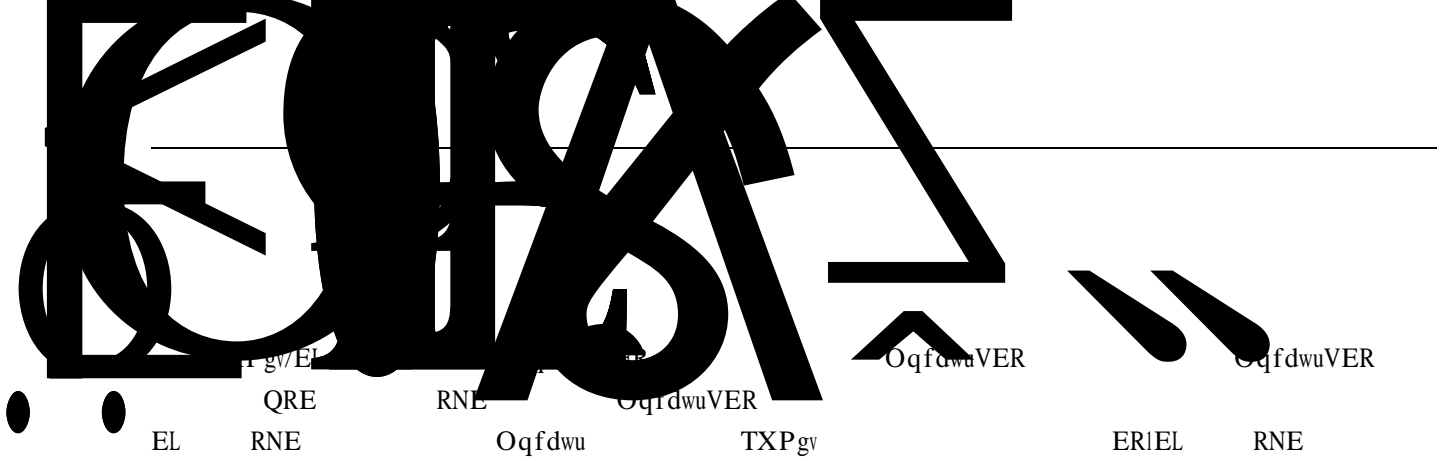




---







EL

QRE  
RNE

RNE

Oqfdwu

OqfdwuVER

TXPgv

OqfdwuVER

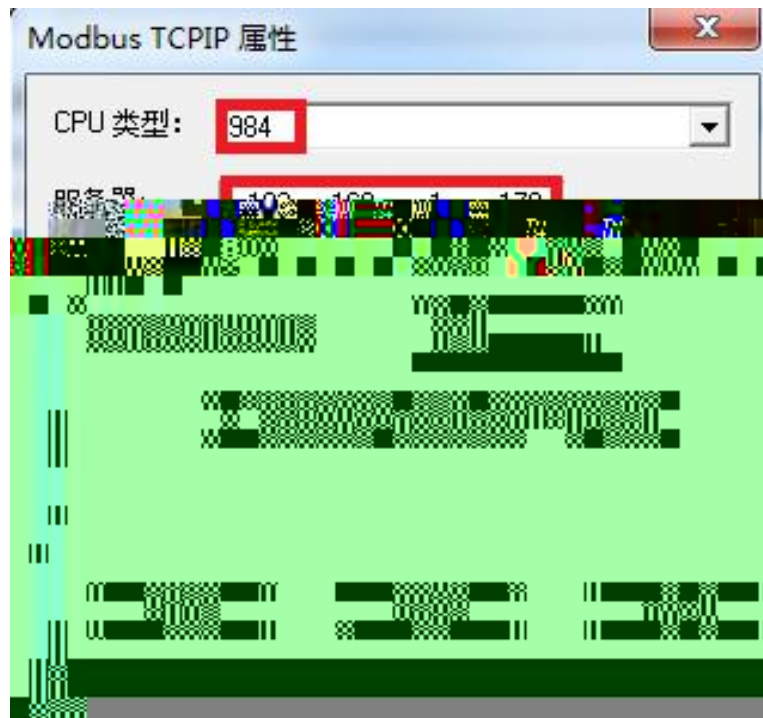
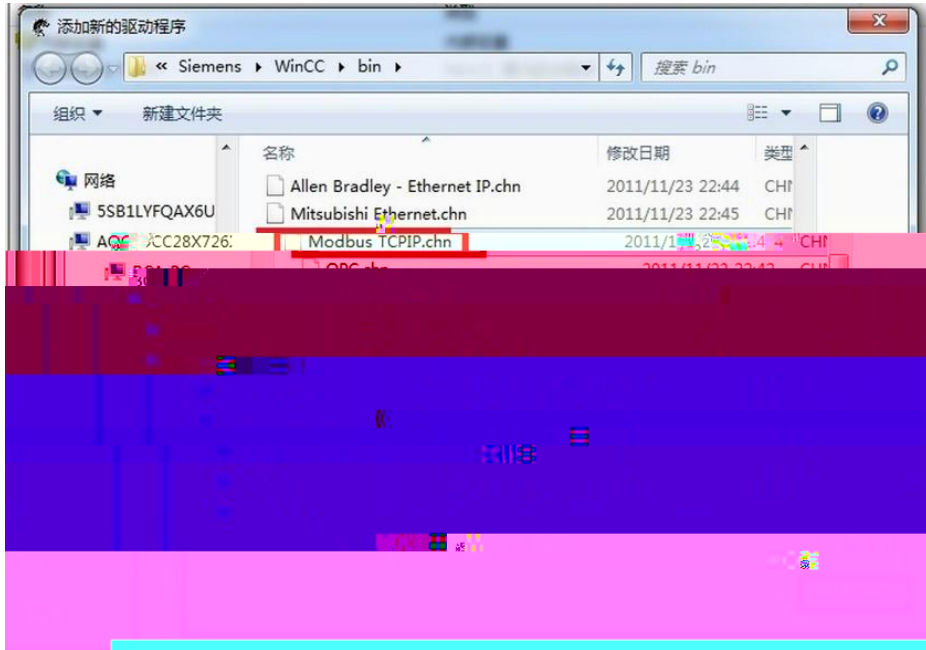
OqfdwuVER

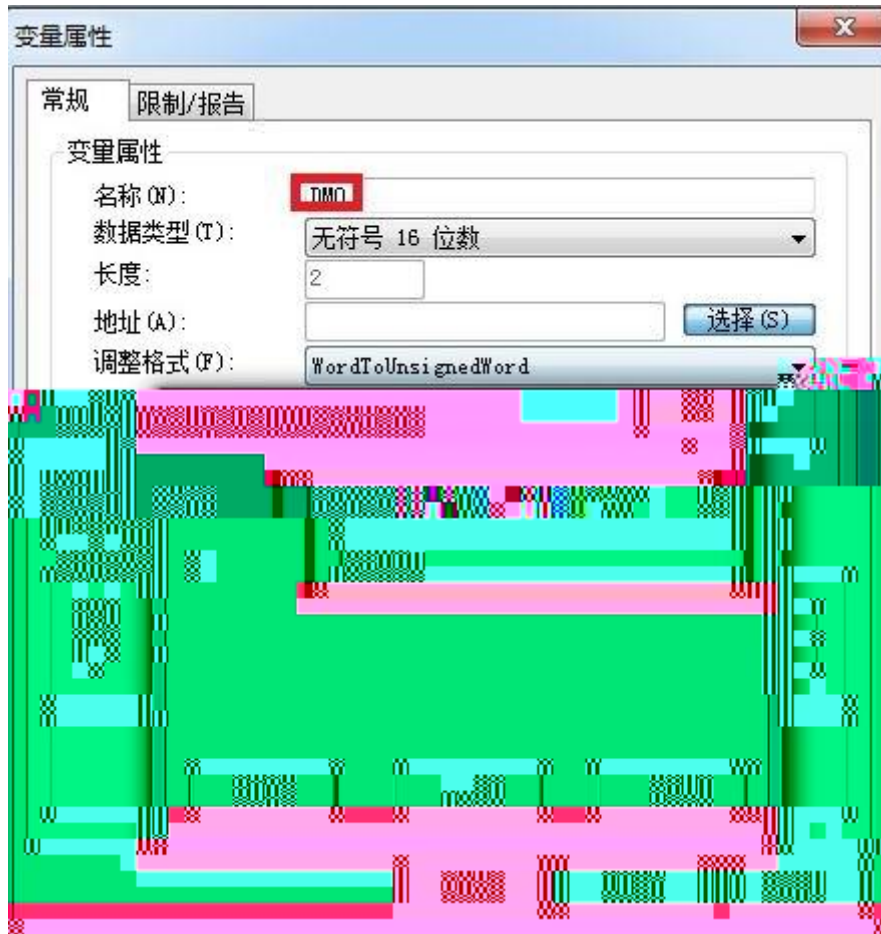
ERIEL

RNE









	EL3IEI4IEU3 RNE
	Ryt Dwu
	KGGG : 2405 NkpmI Cevkxg Cwvq/O FKZ
	TL67
	32I322Odru
VERIWFR	HKPUIVER HKPUIWFR OqfdwuVER TXPgyVER
	32
RNE	TU454
	FUWD
	;08M 3;04M 5:06M 7908M 33704Mdru

	HKPU
	TU454 FUWD ;08M 3;04M 5:06M 7908M 33704Mdru HKPU
QRE	EZ/Rtqitco ogt KHKZ KPVQWEJ Mgr Yctg QRE
	KG 3;4038:03039:
	46XFE 46XFE1322 oC
	2ø82
	;2'
	4236152IGW
TqUJ	
	607 o o152J  132Okp
GUF	8MX
	82 38: 72222
	52 RNE 3 5 2
	EG
N, Y, J	87,52,39 o o
	82i

