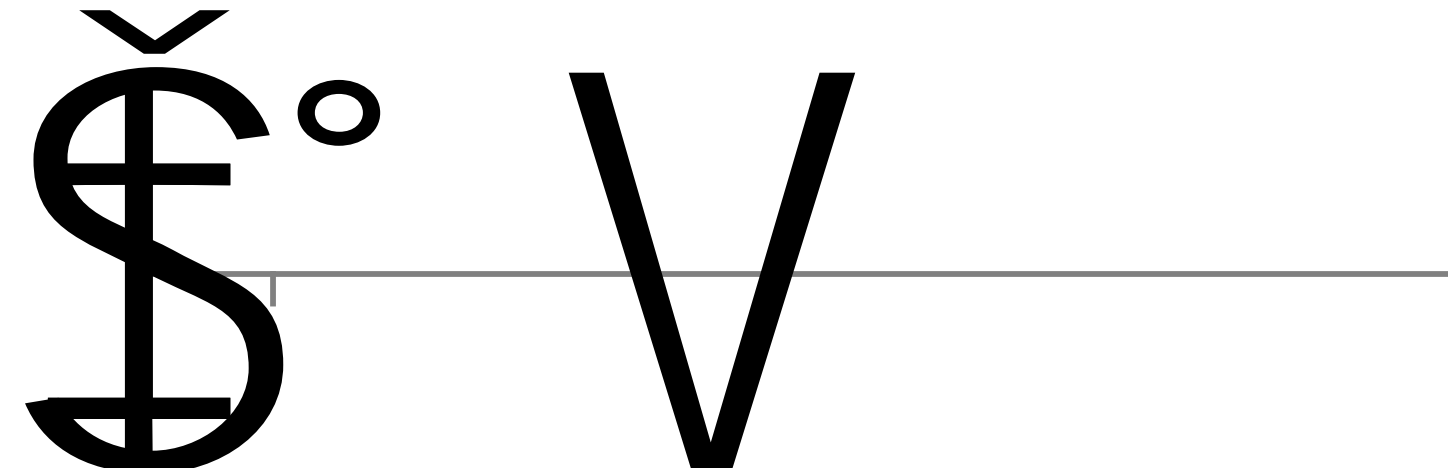
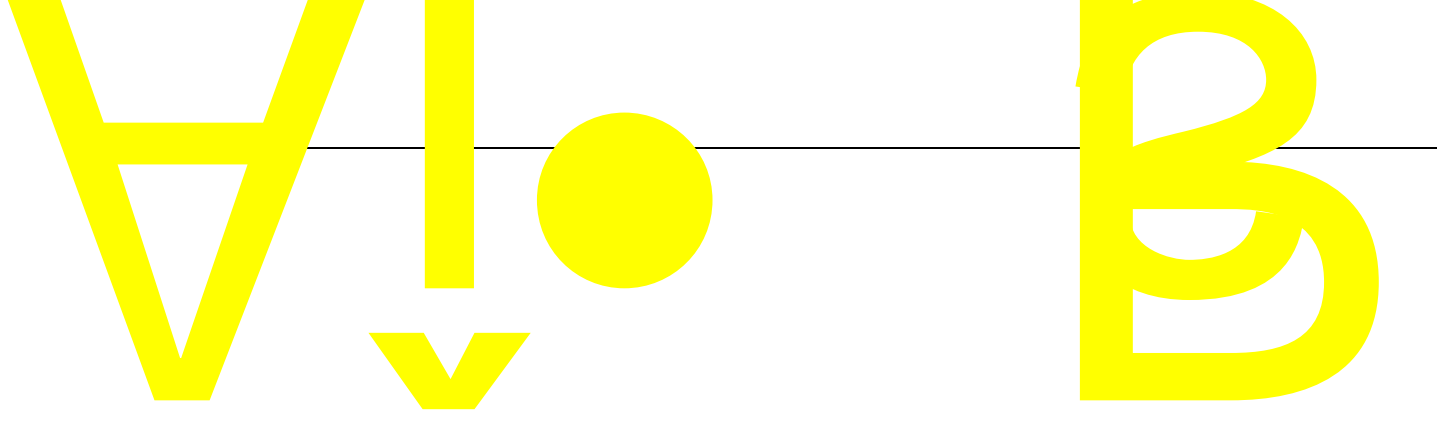
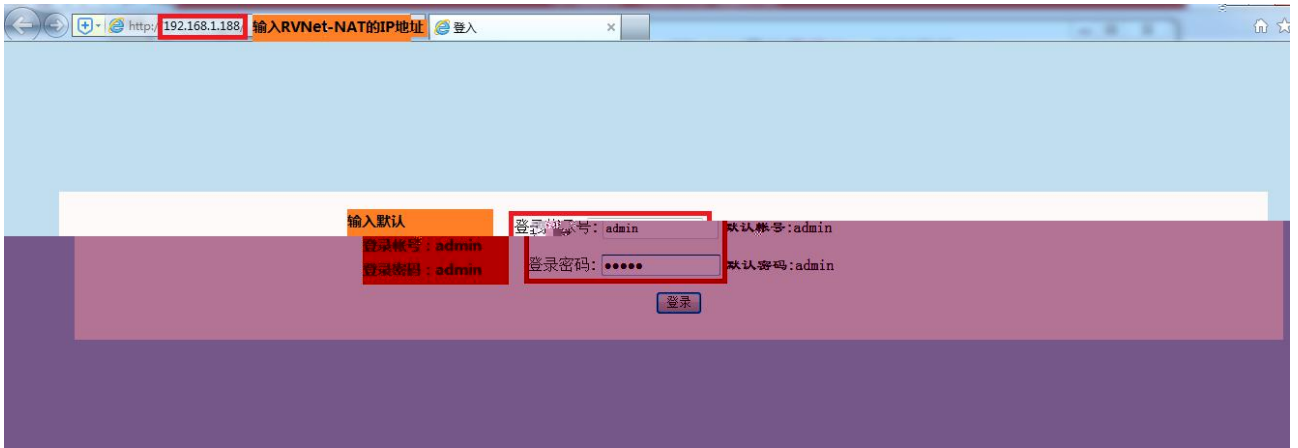


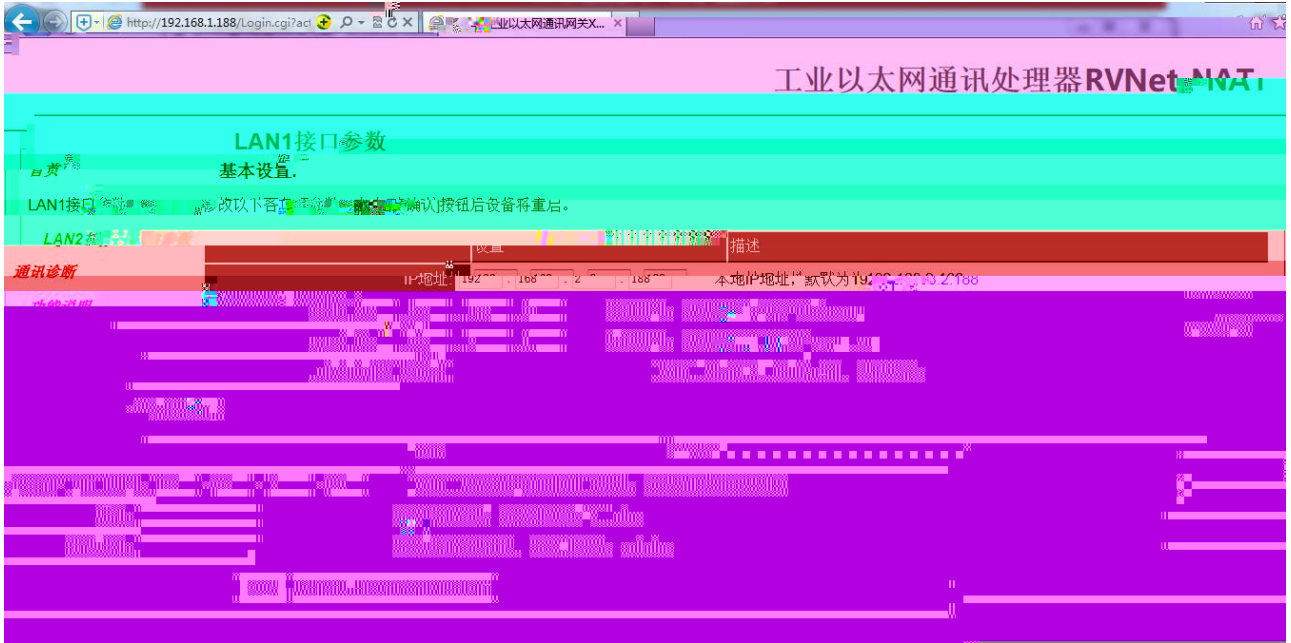
**ROUIN**











# 工业以太网通讯处理器

LAN2接口参数	设置	描述
通讯诊断	IP地址: 192.168.1.188	本地IP地址, 默认为192.168.1.188

The diagram illustrates a network topology where a central device (likely the gateway) is connected to several peripheral nodes. The nodes are arranged in a star pattern around the central device. The connections are represented by lines, and the nodes are depicted as small icons with labels. The diagram is rendered in a colorful, pixelated style.



工业以太网通讯处理器RVNet-NAT

### 通讯诊断

LAN1接口通讯

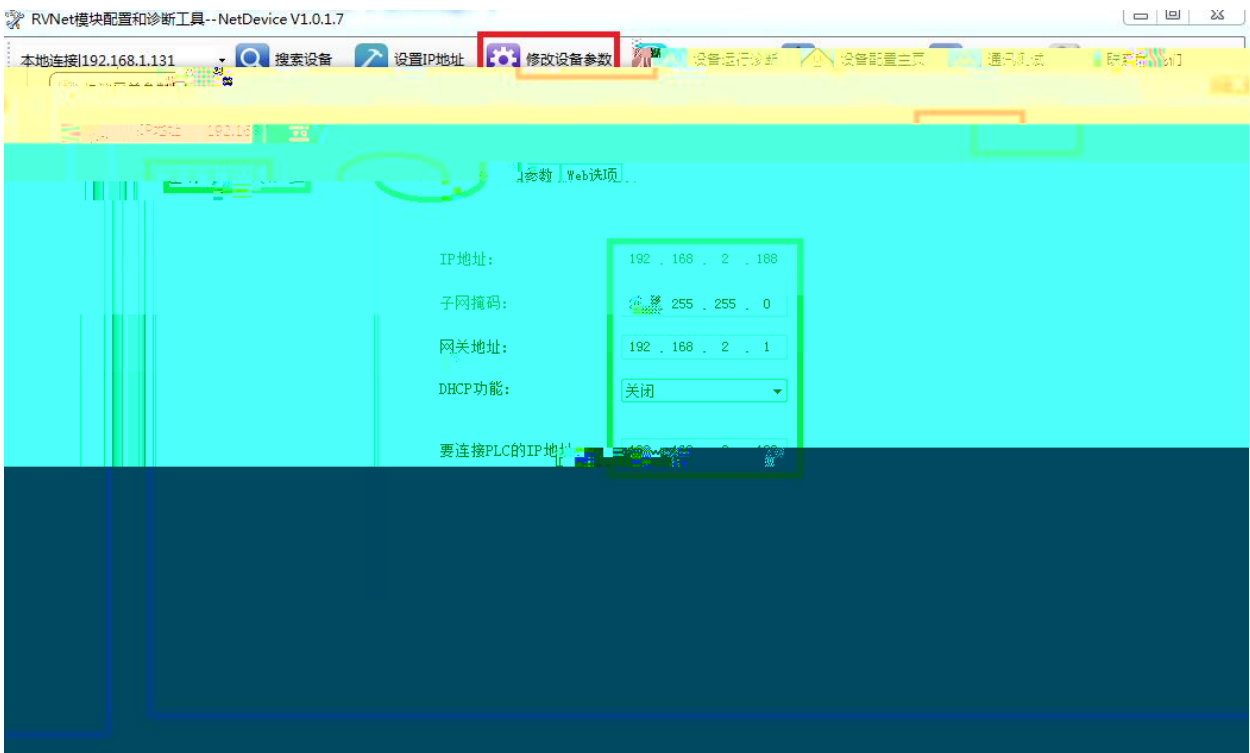
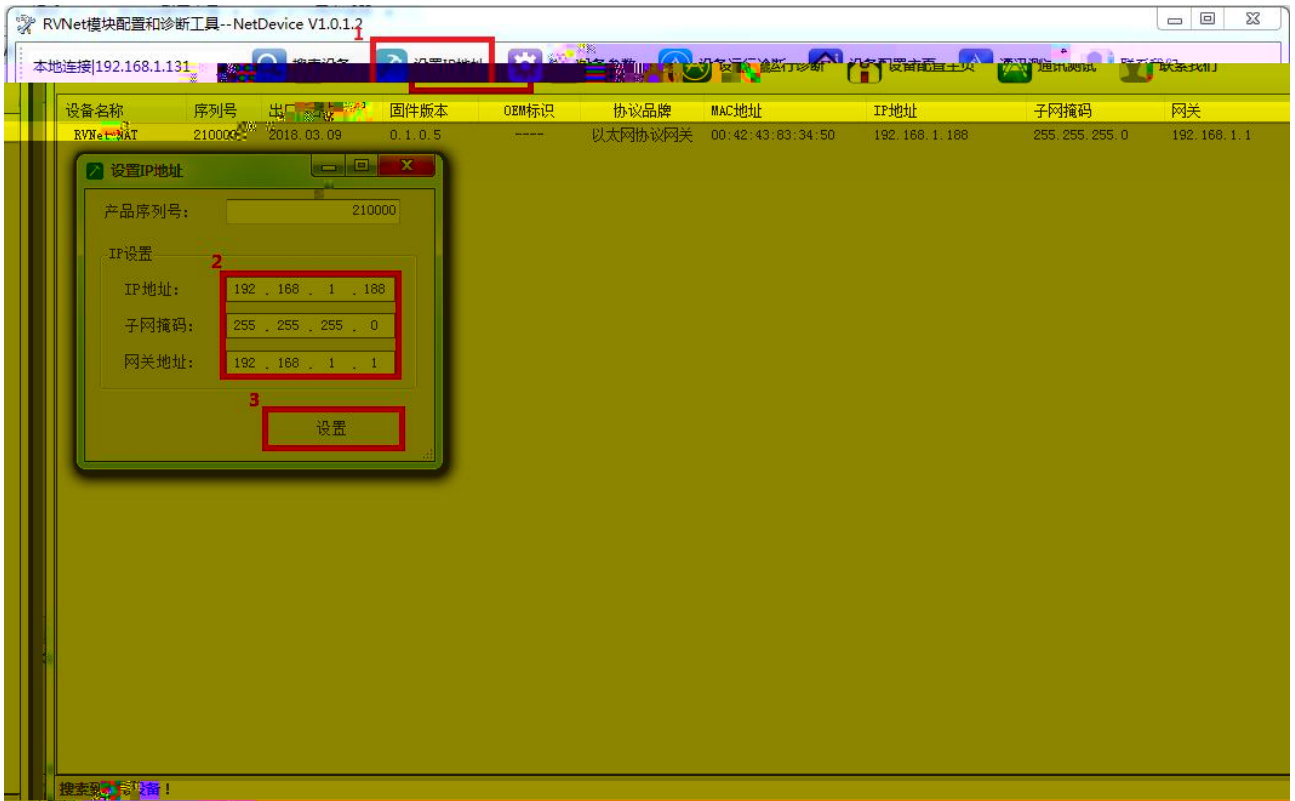
LAN1接口参数

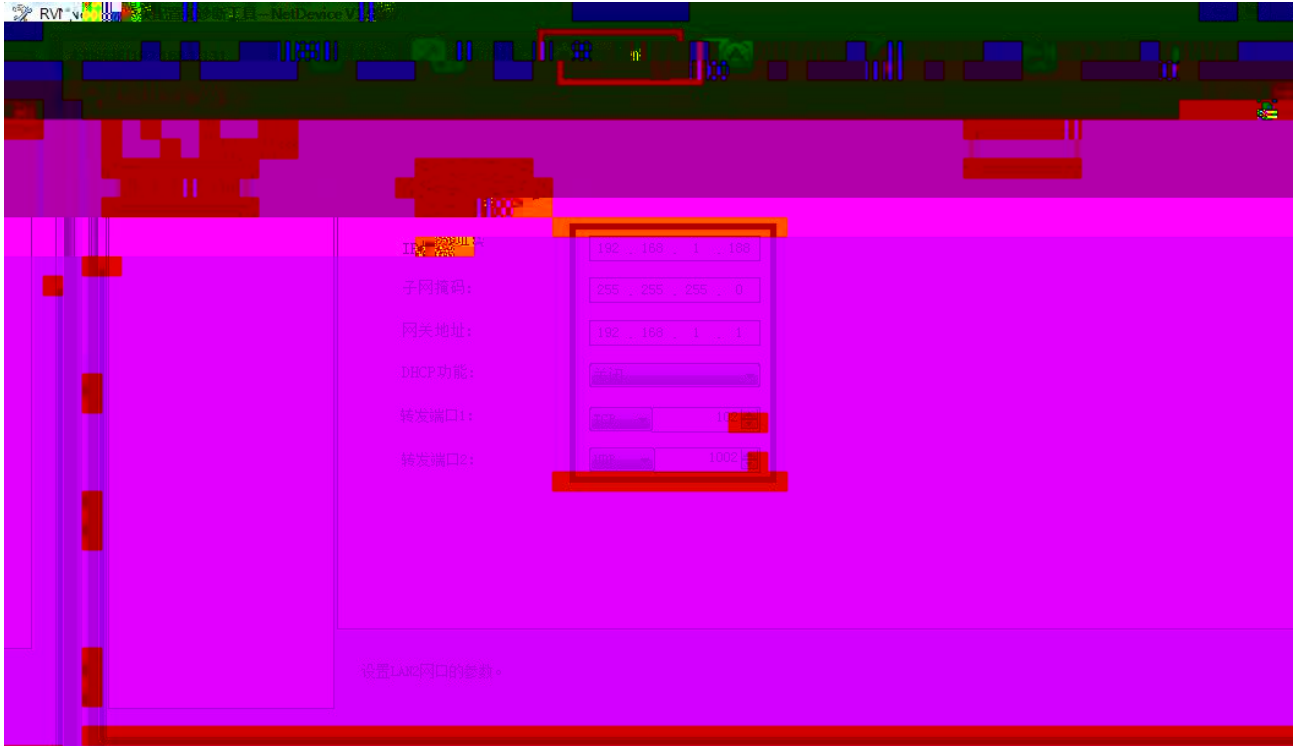
通讯请求总数	0
正确响应次数	0
错误响应次数	1
TCP/UDP存活数	0

系统信息

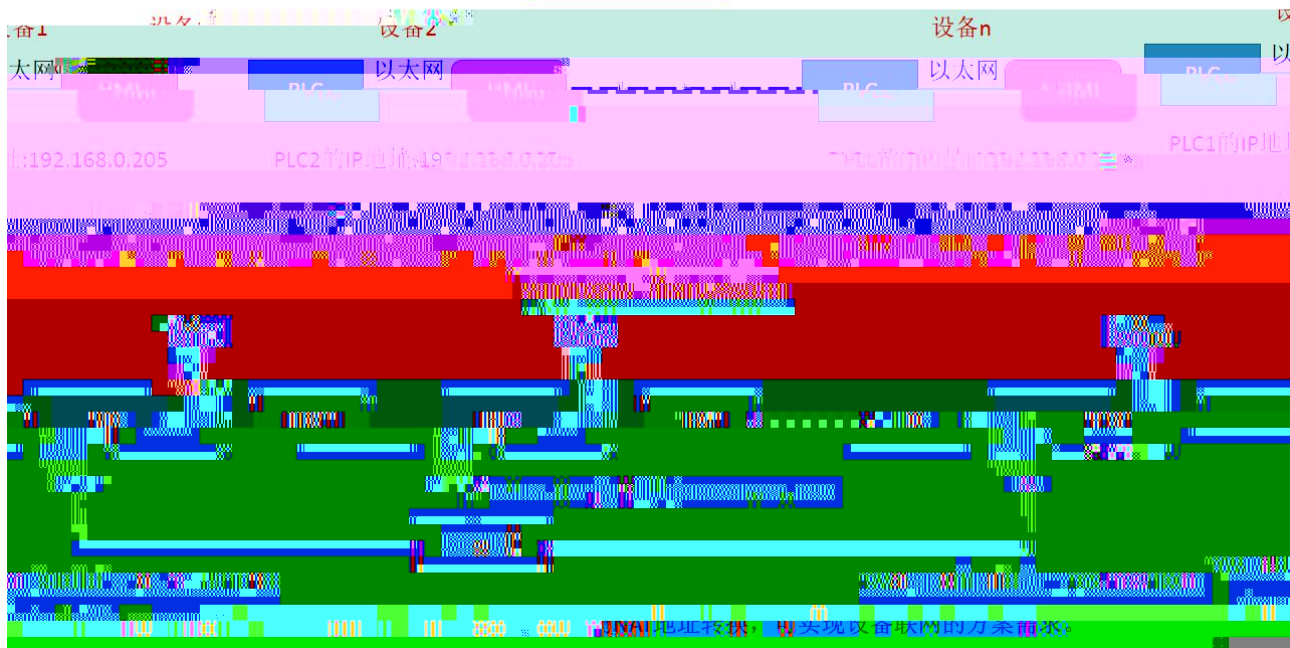
运行时间	0天 00:09
上次故障	无故障







车间原设备架构



---

---

|

\_\_\_\_\_

\_\_\_\_\_

