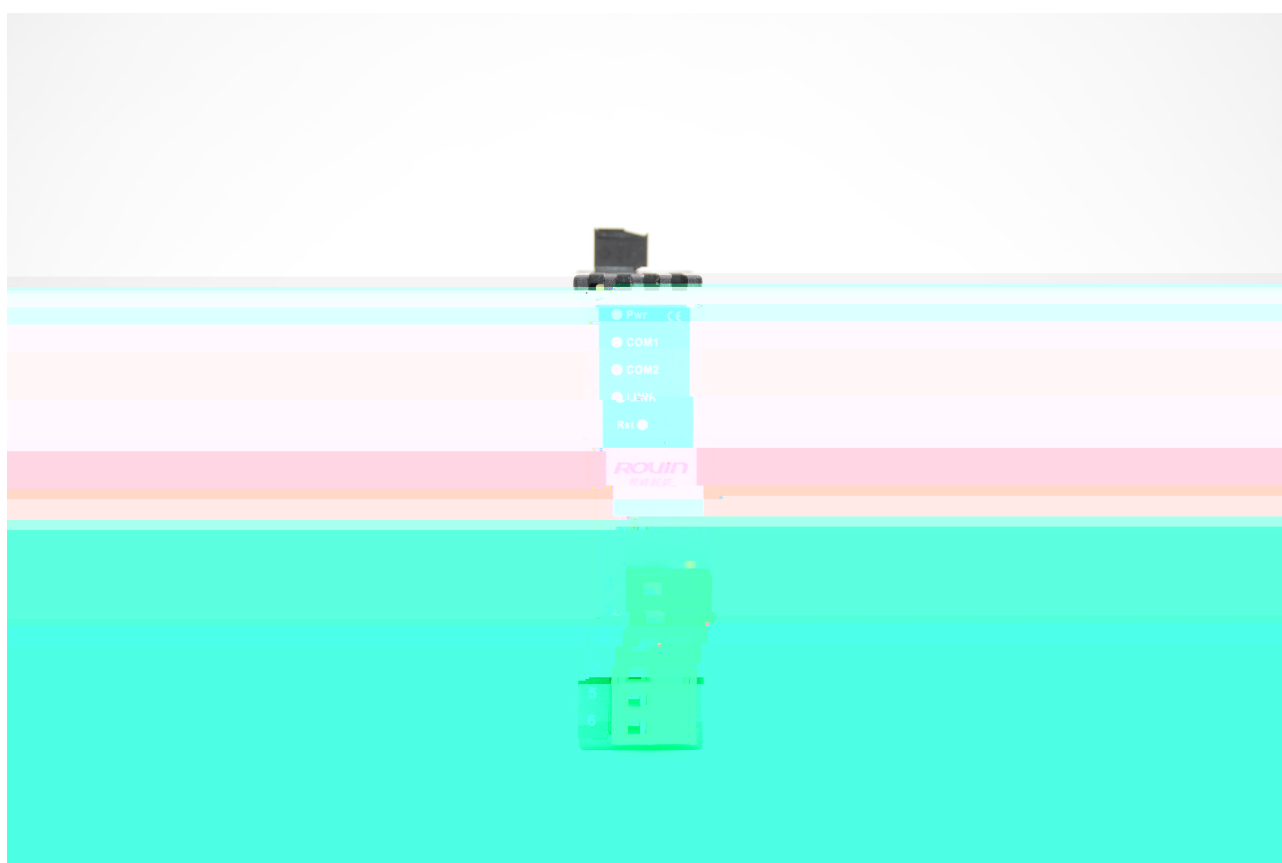
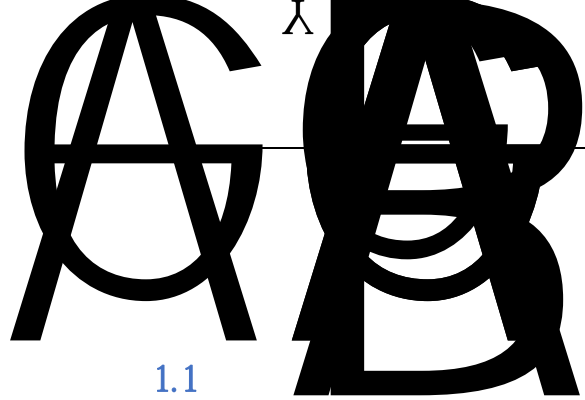




RVNet-MB

Modbus





1.1

RVNet-MB



TCP

RVNet - MB
2 RVNet - MB

Modbus RTU/ASCII Modbus TCP

PLC

TCP

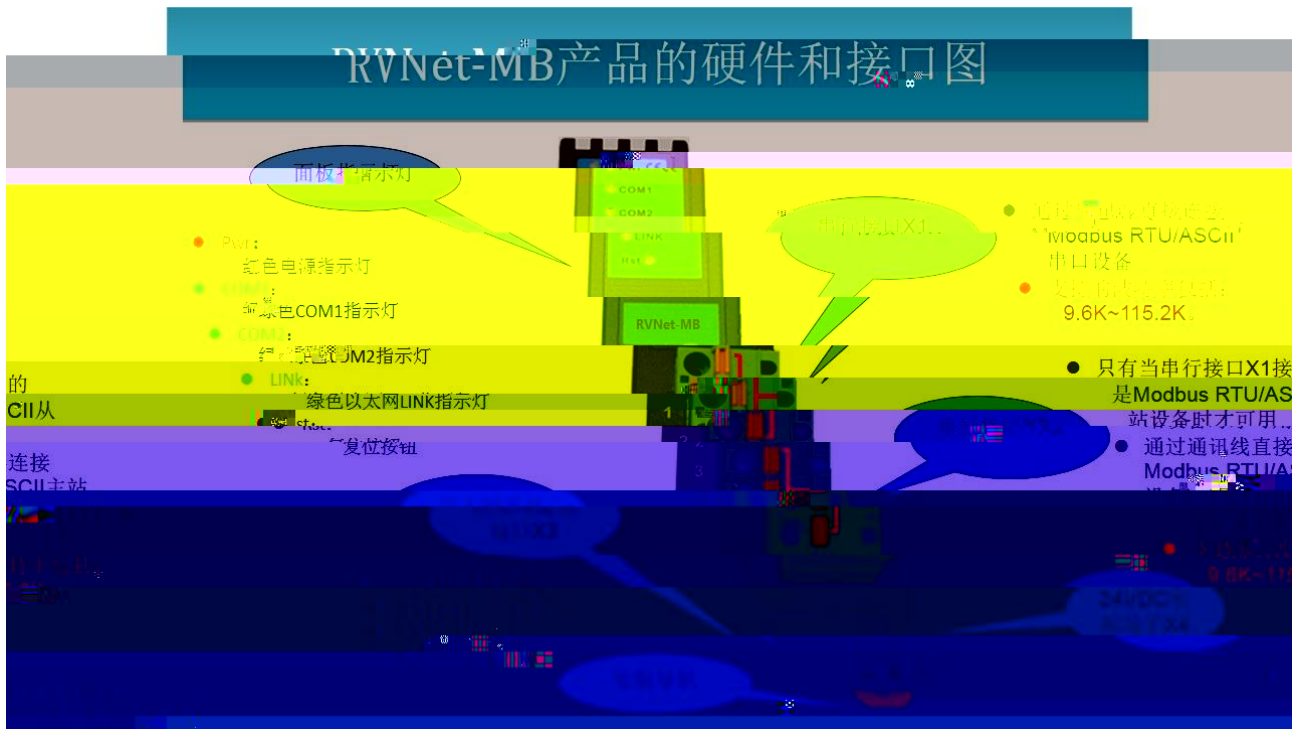
RVNet - MB

TCP

3 RVNet - MB Modbus TCP

2 3ms

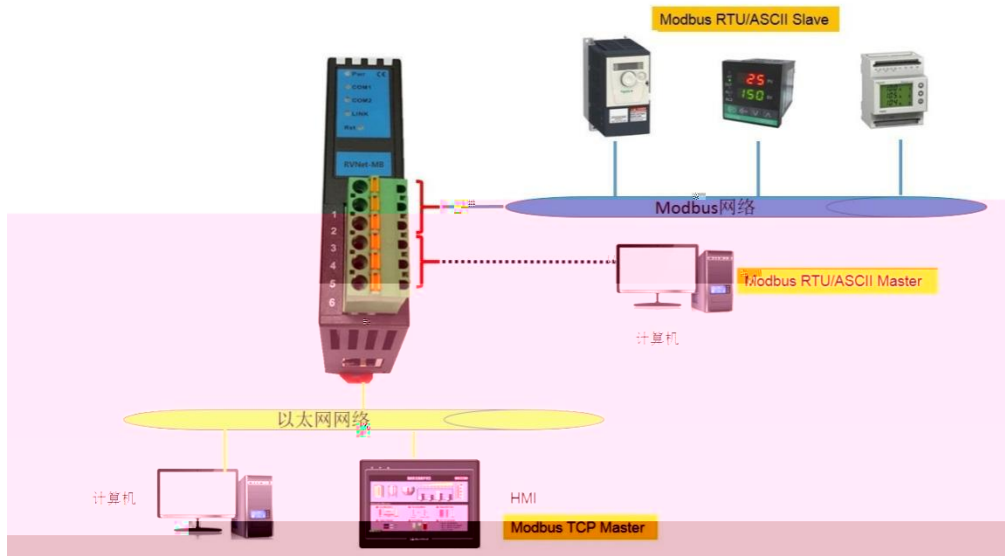
2.1



1.	X1	Modbus						
	➤	Modbus	RVNet - MB	Bus	— TCP			
			Modbus	Modbus			Modbus	
	➤	Modbus	X2	Modbus	Modbus			X2
			RVNet - MB	Bus	-- TCP			
			X2					
2.	X2	X1	Modbus	RVNet - MB				Bus
	— TCP							
3. Rst:		5-6	COM					

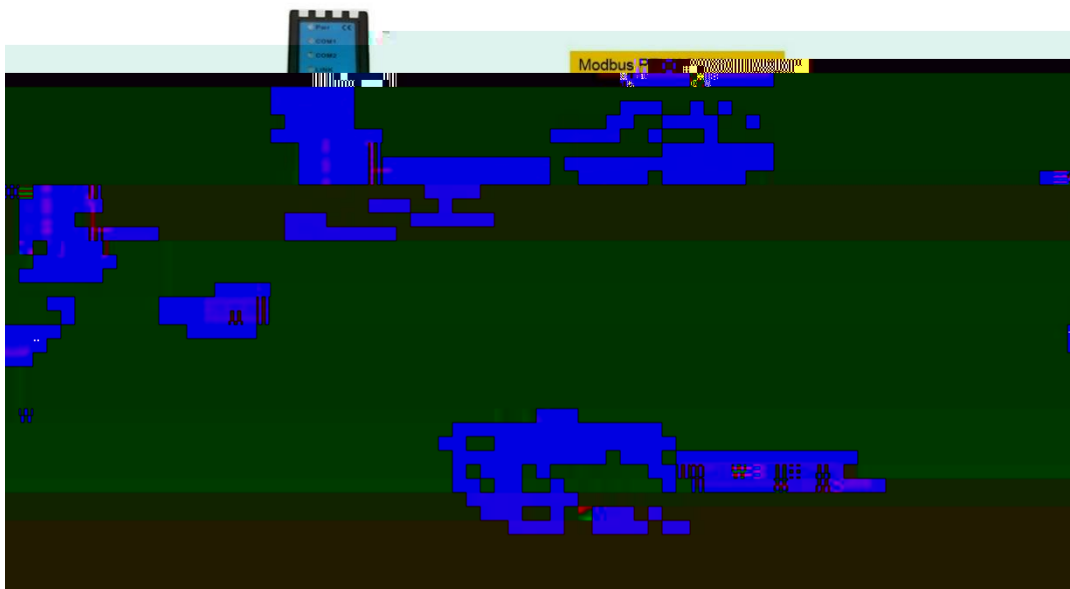
2.2

2.2.1



- | | | | |
|----|--------|------------------|--------------|
| 1. | Modbus | Modbus | X2 |
| 2. | 6 | Modbus RTU/ASCII | |
| 3. | Modbus | RS485 | RS232 Modbus |
- Mosbus

2.2.2



- | | | | |
|----|----|------------------|------------|
| 1. | | Modbus RTU/ASCII | Modbus TCP |
| 2. | X2 | | |

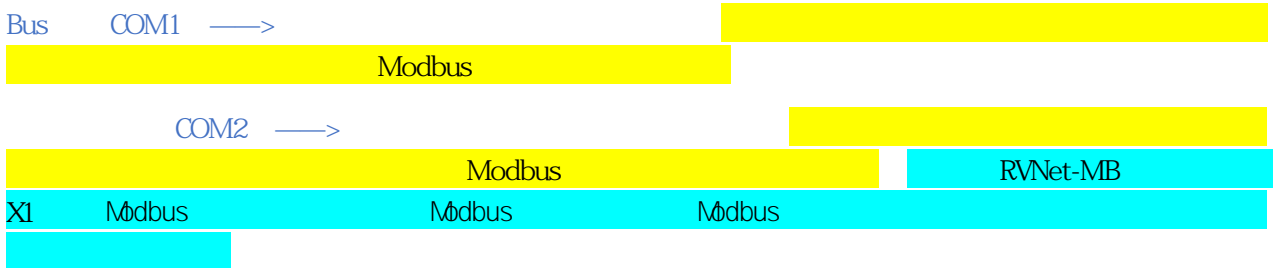
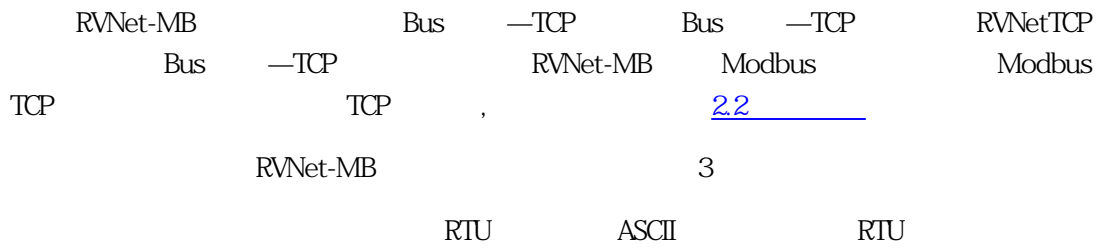
23

RVNet-MB	4	X1	X2	RJ45	X3	X4
----------	---	----	----	------	----	----

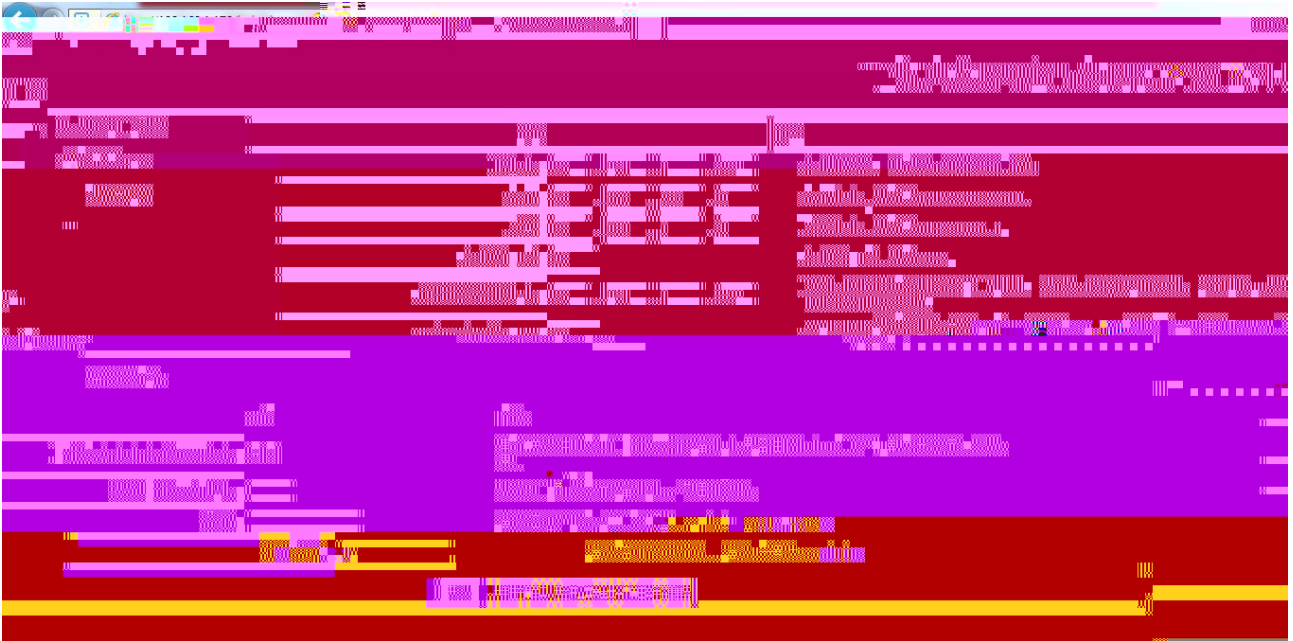
Internet Explorer t

192.168.1.1 t r

3.2.1



3.2.2



RVNet-MB IP

[]

RVNet-MB

IP

ModbusTCP

502

IP

RVNet-MB

IP

Bus

—TCP

RVNet-MB

Bus

—TCP

Modbus

“

”

Bus

—TCP

“

”

modbus

Bus

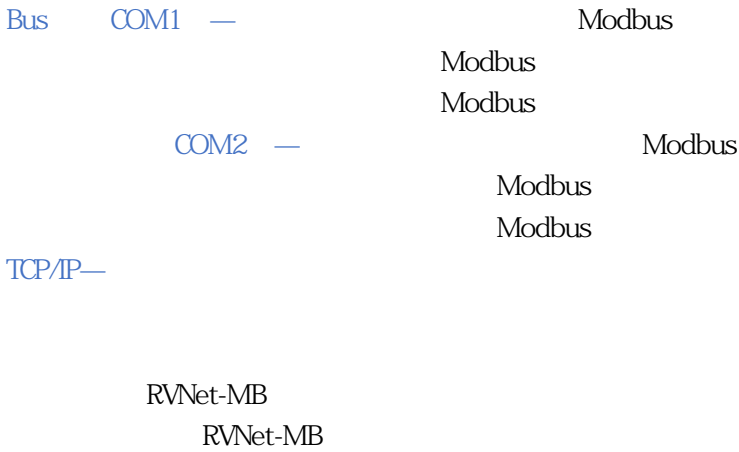
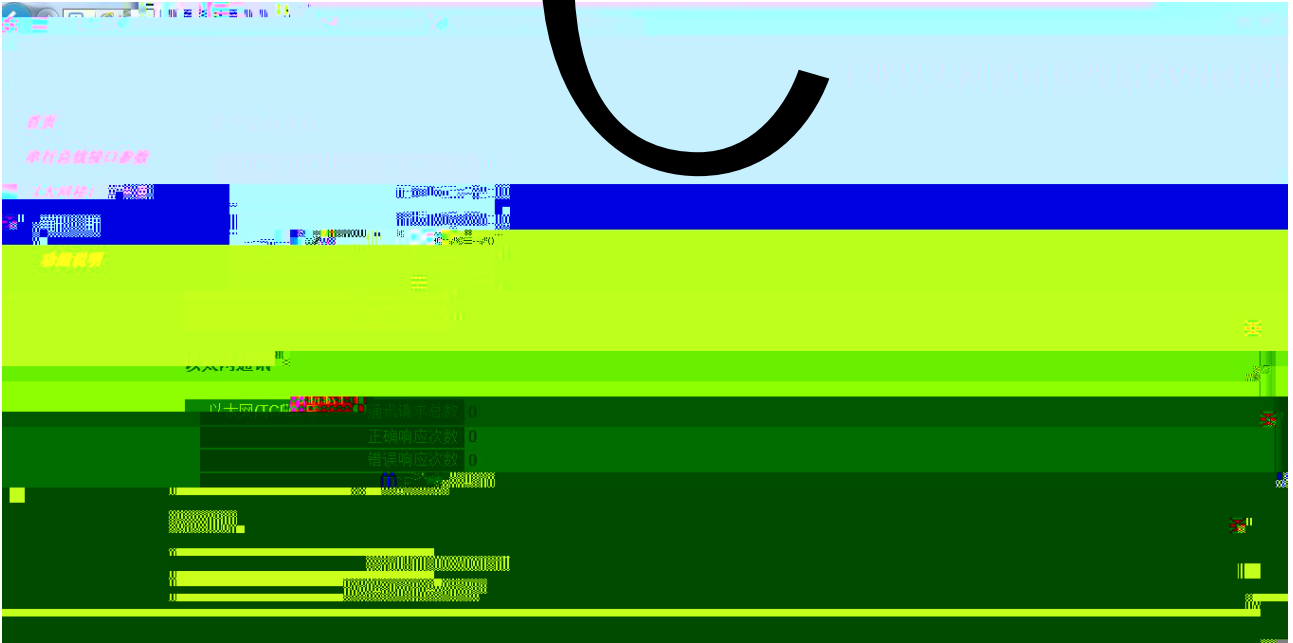
—TCP

[]

RVNet-MB

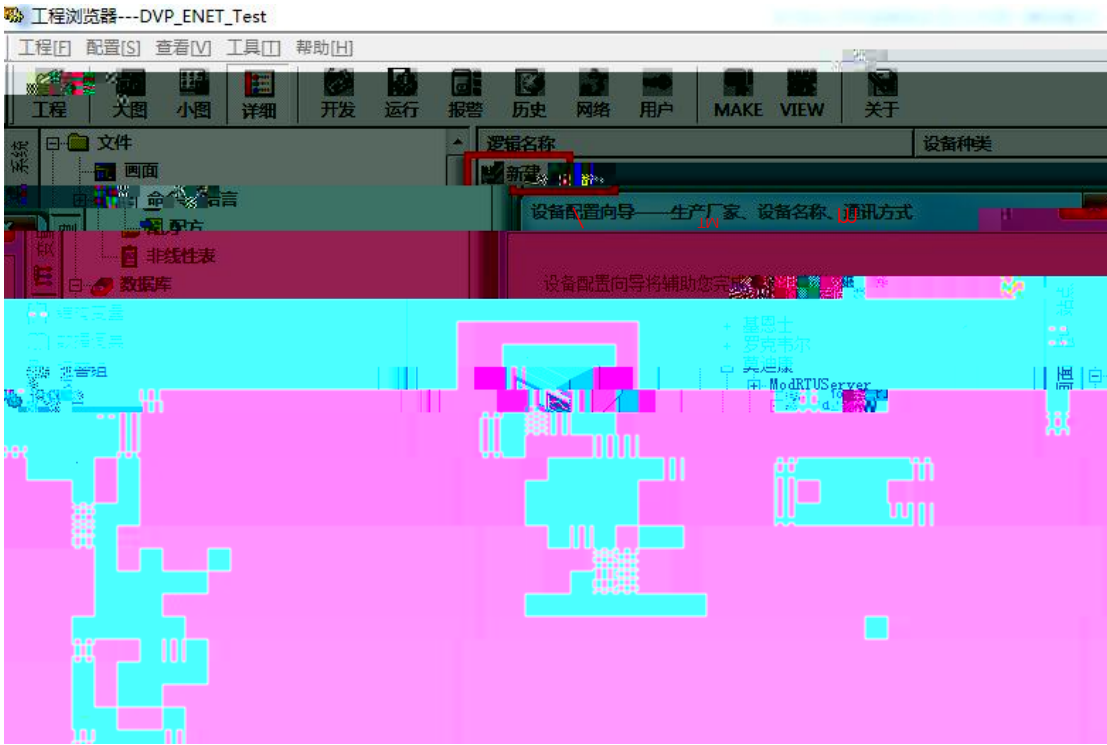
3.2.3

C



4.1 RVNet-

ES



3.

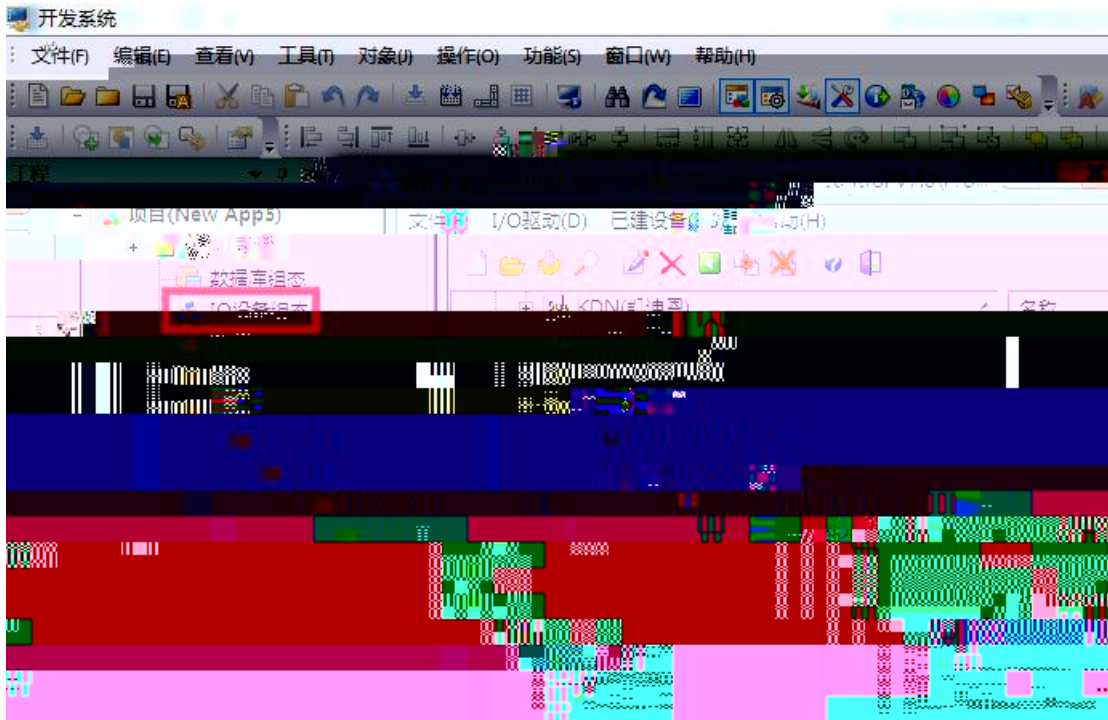


4. RVNet-MB IP /



4.2 RVNet-MB

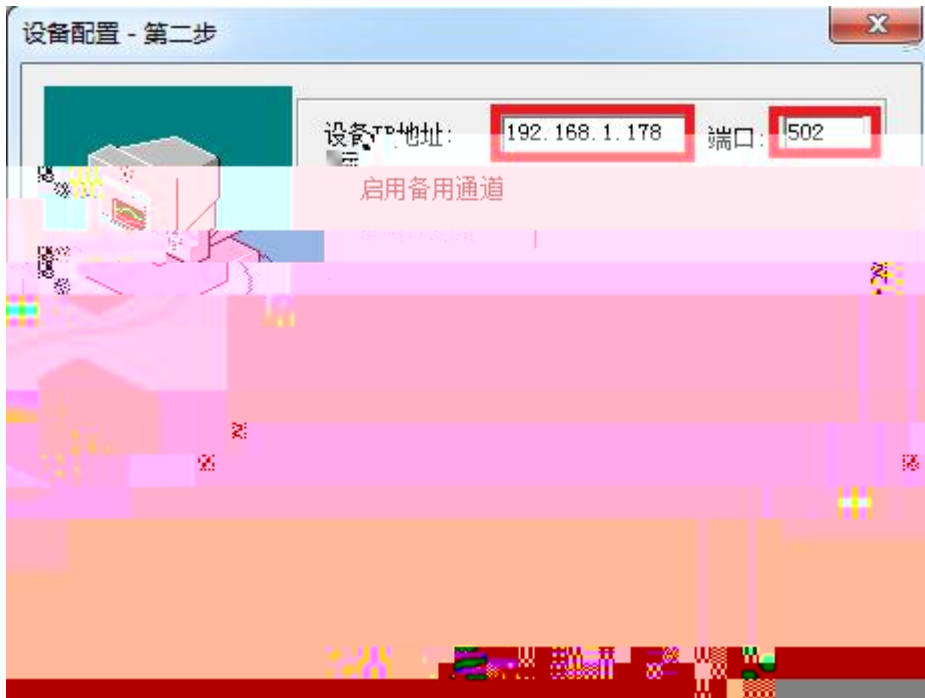
1. " IO " PLC " MODI CON -MODBUS TCP "



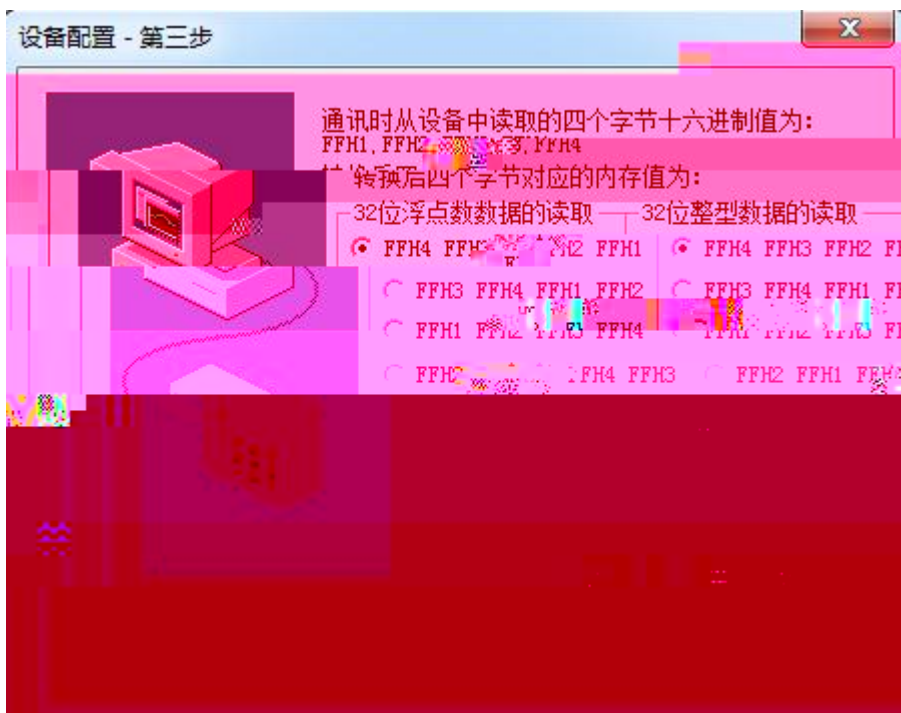
2. " " DVP " " 1



3. " IP " RVNet-MB IP 192.168.1.178 " 502

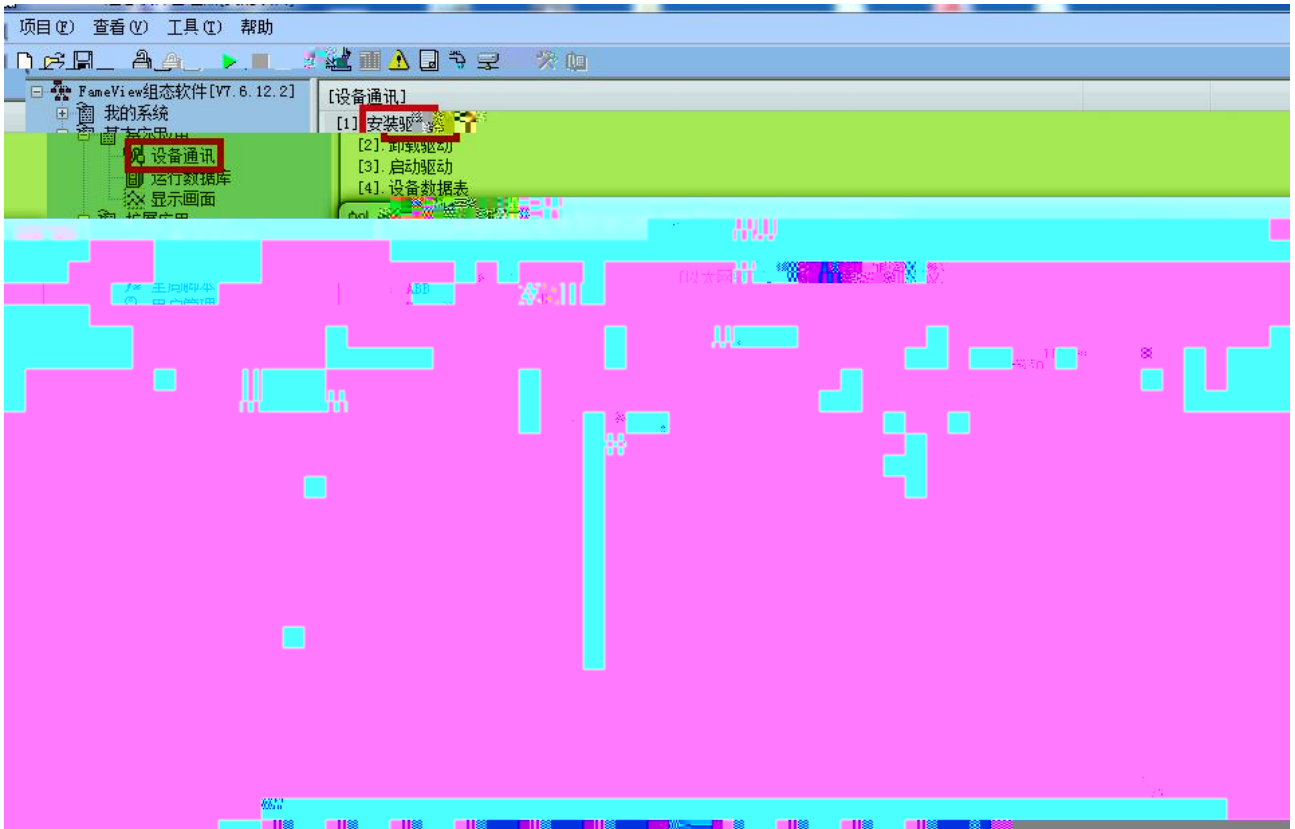


4.

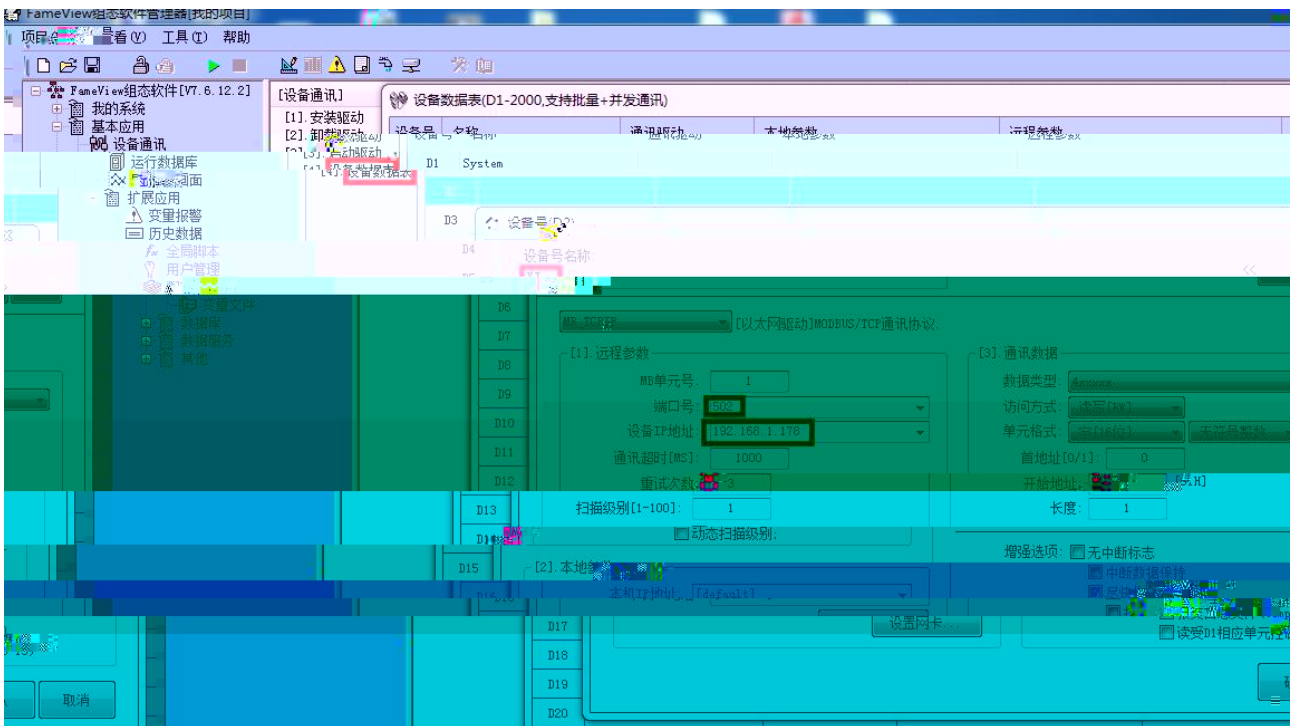


4.3 RVNet-MB

1. " " " " " " MB_TCPI P " "

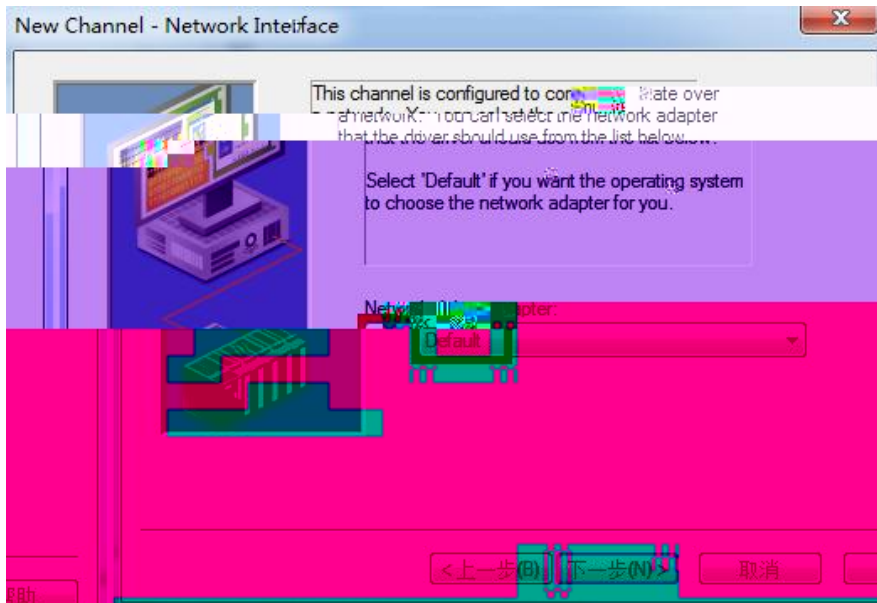


2 " " " " XJ " MB " MB
 Modbus " " 502 " IP " RVNet-MB
 IP 192.168.1.178 " "

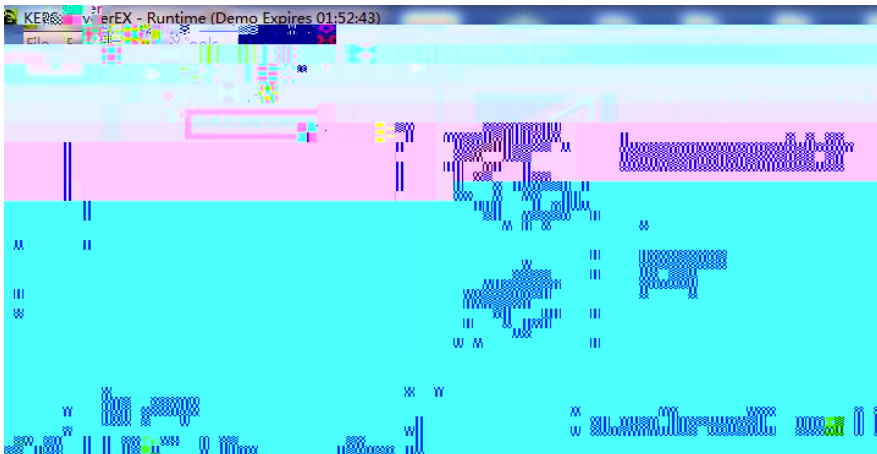


4.4 RVNet-MB Kepware

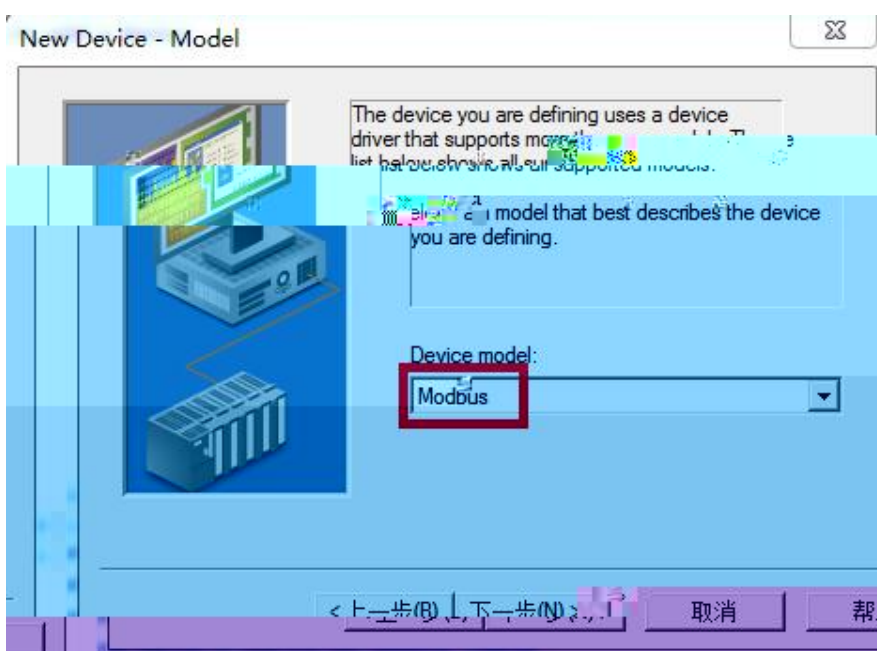
1. KEPServerEX “ Click to add a channel ” i



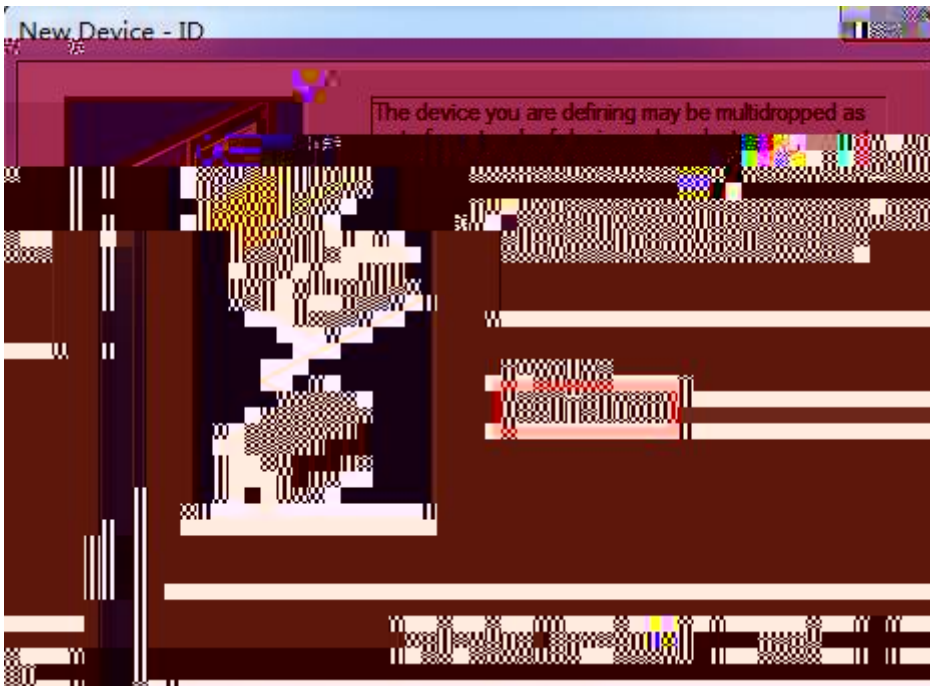
4. " click to add a device" ,



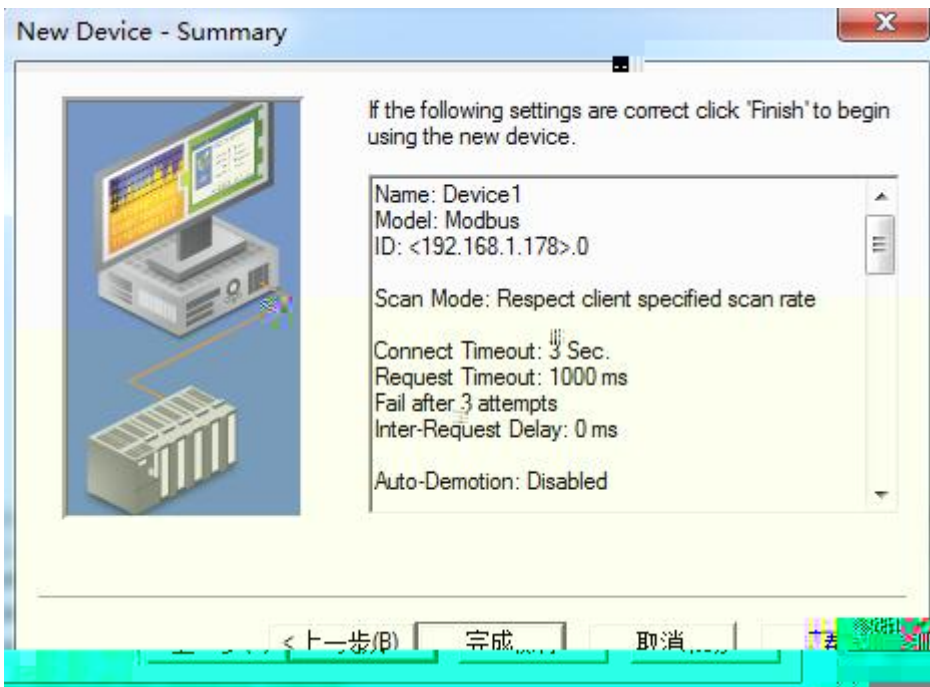
5. " Device Model " " Modbus"



6. " Device ID" IP 192.168.1.178.0 Modbus



7.



4.5 RVNet-MB WINCC

1. Wincc " " " i



2. “Modbus TCP/IP #1” “ ” “ ” “ ”
 “ CPU ” “ 984 ” “ ” RVNet-MB IP “ ” 502 ”
 “ Modbus



Modbus

Pwr COM1 COM2 Link
 IEEE 802.3 Link/Active
 RJ45
 10/100Mbps
 Modbus TCP

Auto-MDIX

TCP	6
X1	RS485 RS232
	9.6K~115.2Kbps
	Modbus RTU/M

2755

250101

0531-88689022

0531-88689022

111

266107

0532-68894021 83029299

0532-83029299

18753243991 garywei@dingtalk.com

www.roviniot.com

