

---

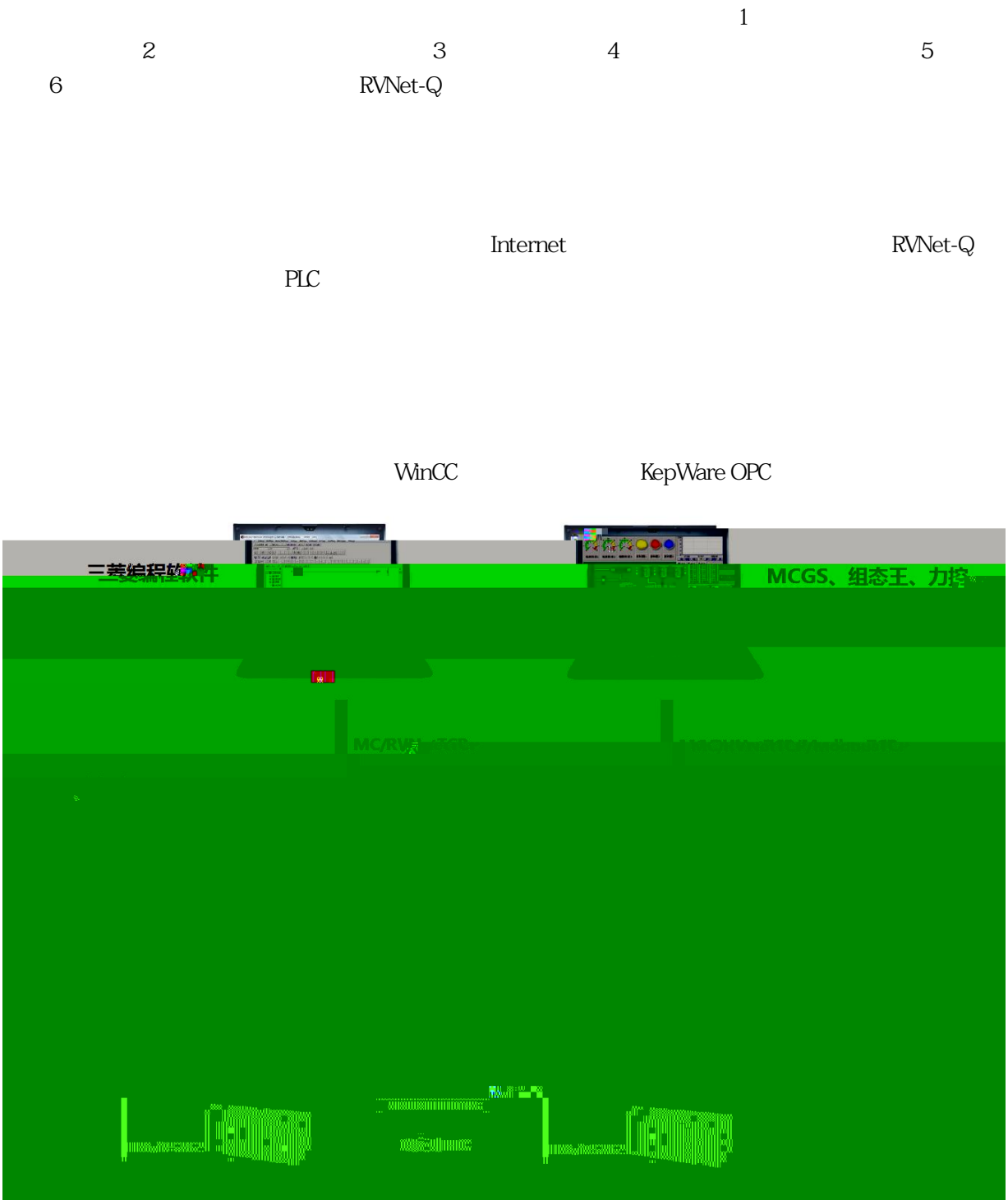
**ROUIN**

RVNet-Q

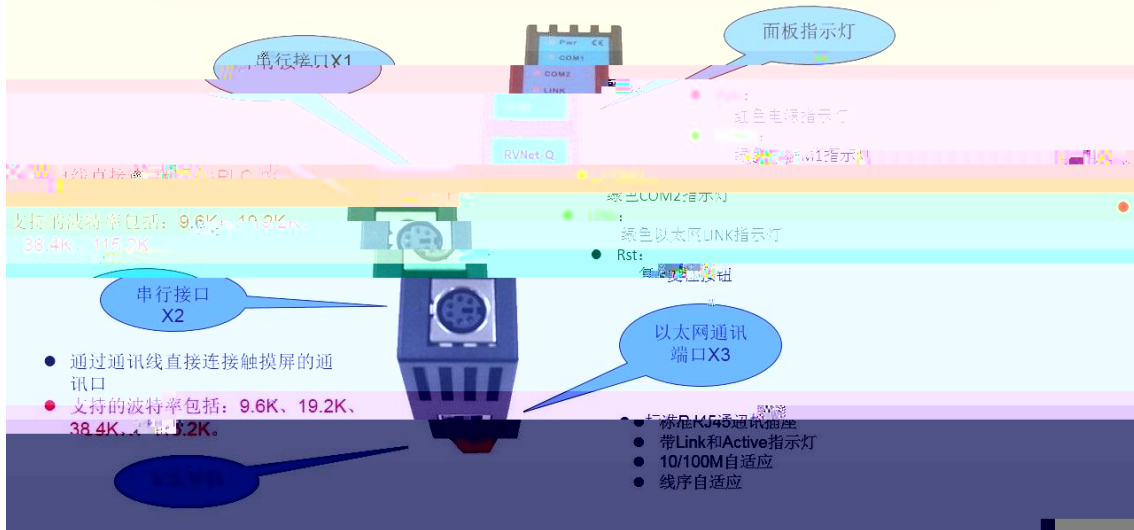
Q PLC







## RVNet-Q产品的硬件和接口图

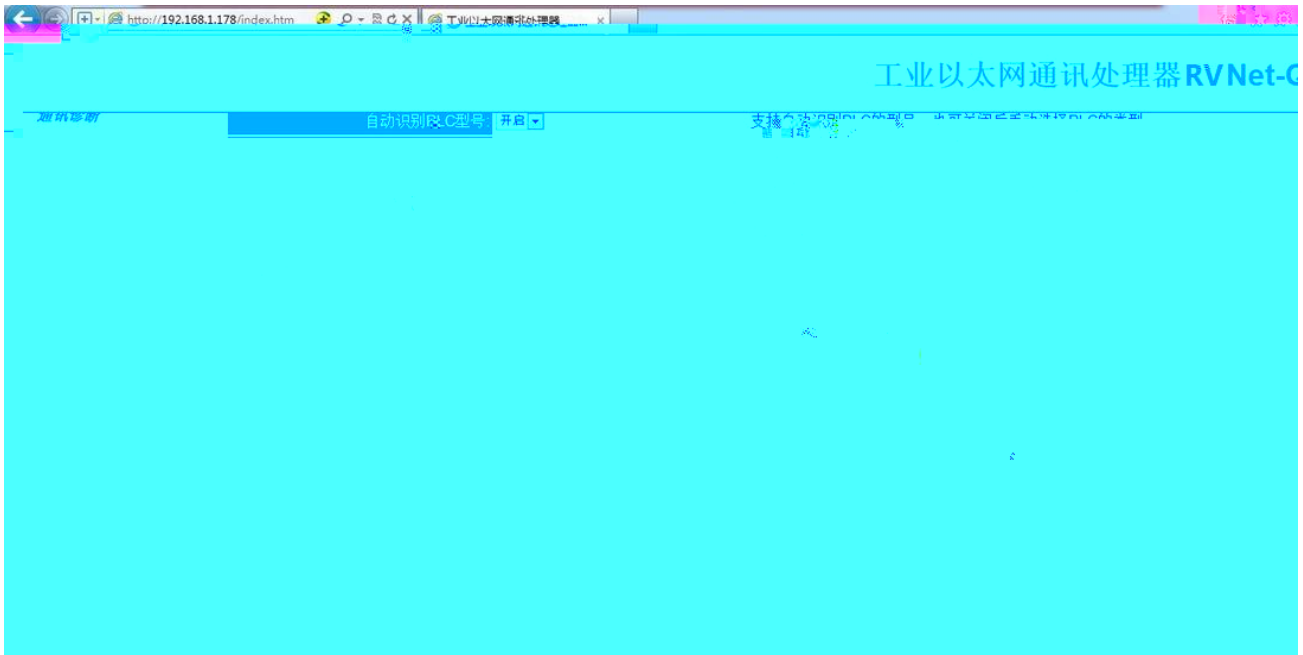


---

RVNet-T







PLC                   “   ”   “   ”                   “PLC (COM1)——>PLC   ”

PLC

HMI                   “   ”   “   ”                   “HMI (COM2)——>   ”

HMI

                  RVNet-Q                   “                   ”   “RVNetTCP”                   “

”   “RVNetTCP”                   “                   ”

                  RVNet-Q                   3

PLC (COM1)——>PLC                   PLC                   “   PLC   ”   “   ”

PLC (COM1)——>                   PLC

HMI (COM2)——>                   “HMI                   ”   “   ”                   HMI

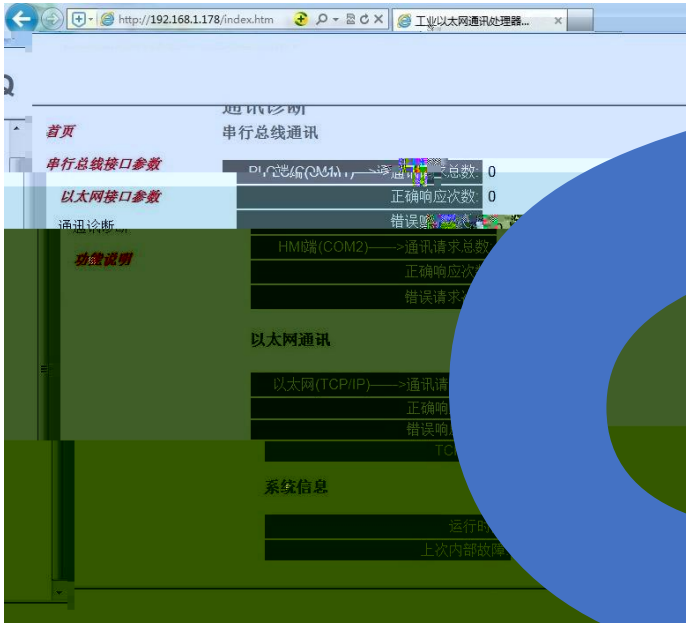
                  “HMI                   ”   “   ”

# 1.1.1.1



RVNet-Q IP

[ ] RVNet-Q



PLC (COM1)——>

PLC

PLC  
PLC

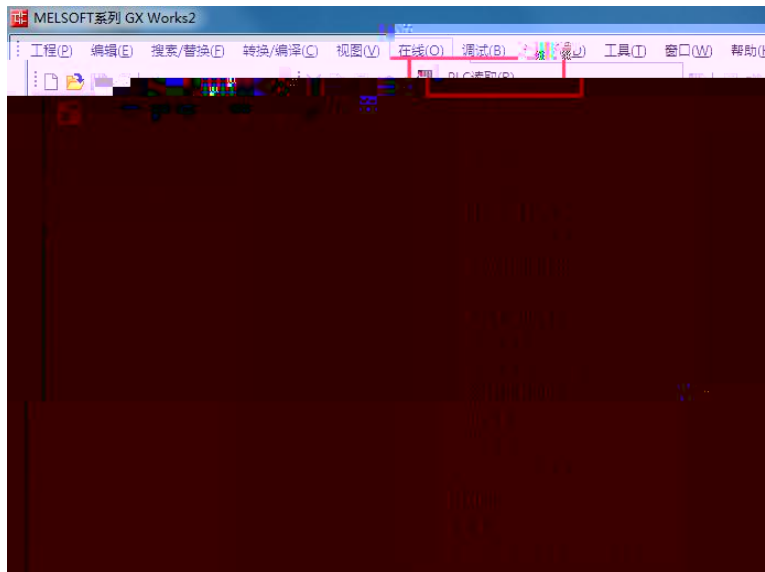
HMI (COM2)——>

(TCP/IP)——>

TCP  
RVNet-Q  
RVNet-Q

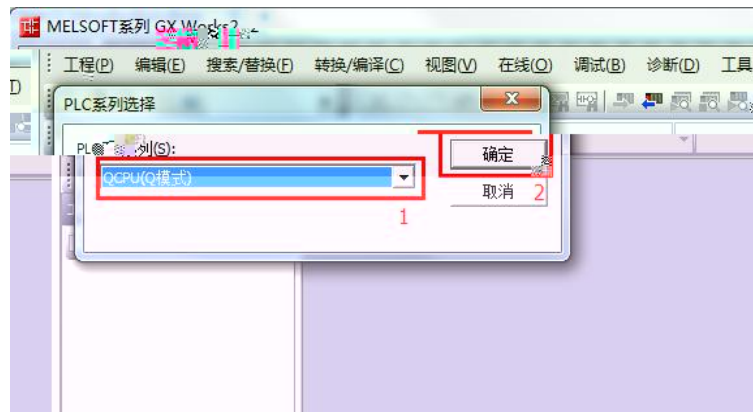
S7TCP

v



2.

Q (mode) " "



3.

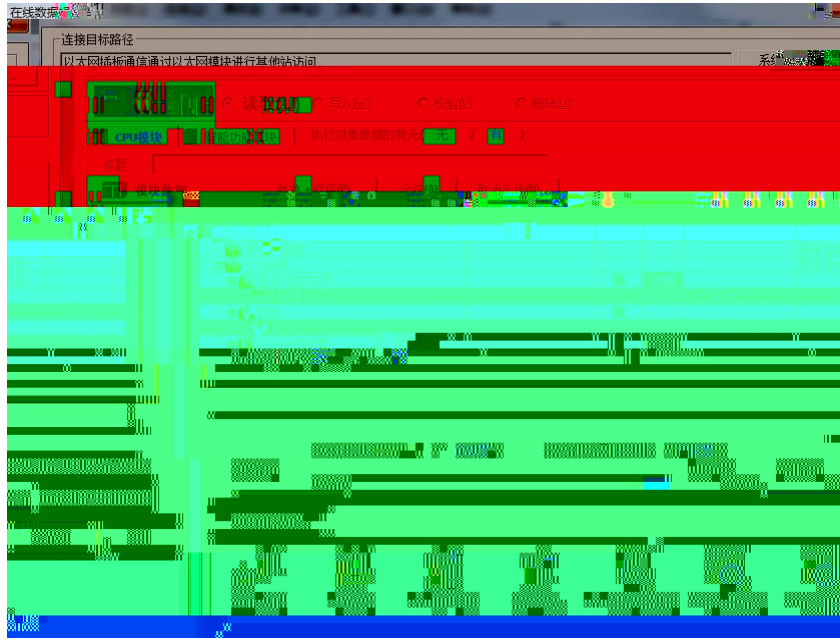
" "

" "





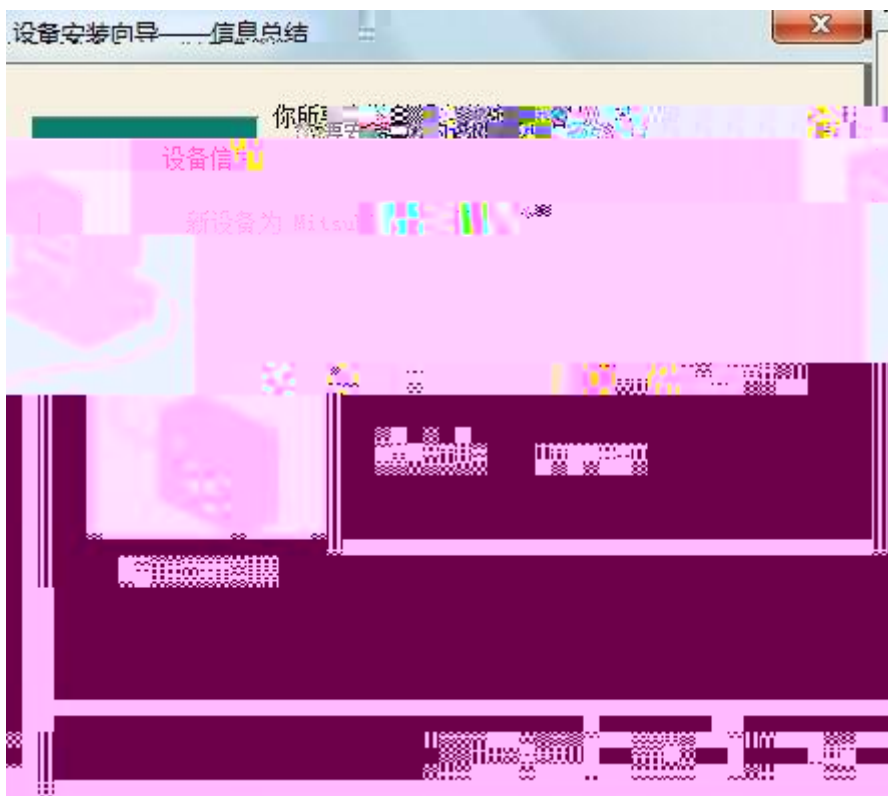
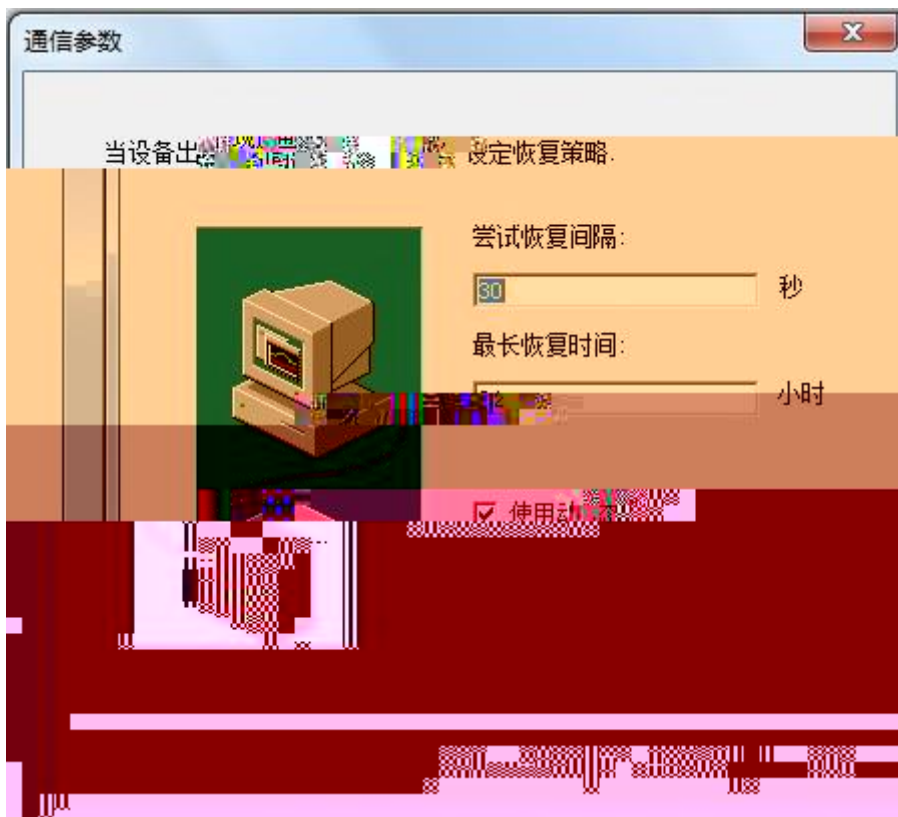
5.

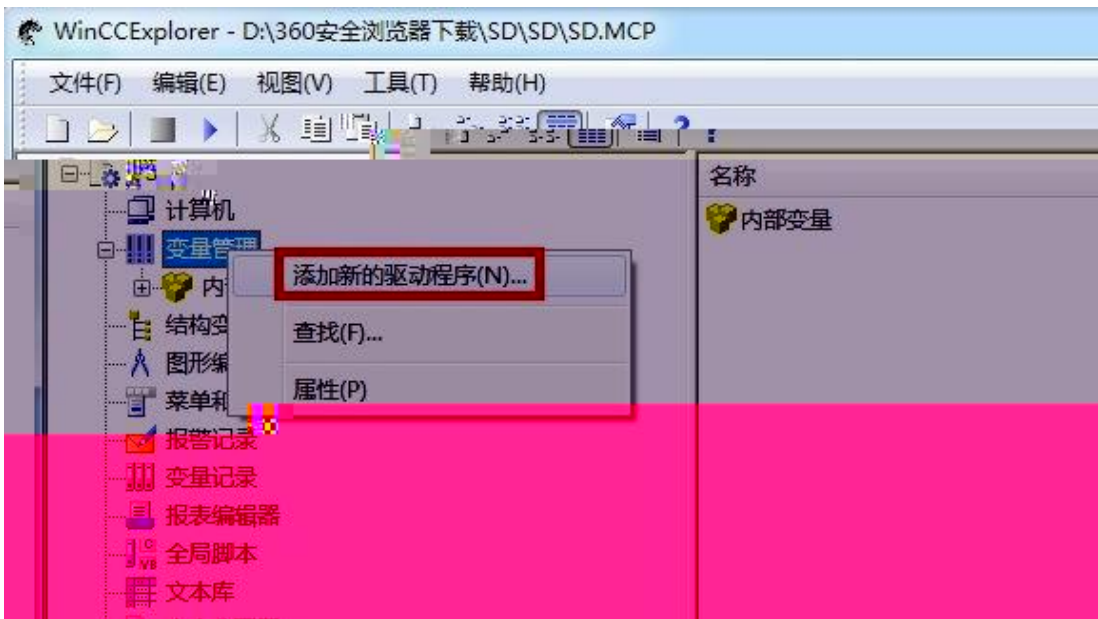


6.

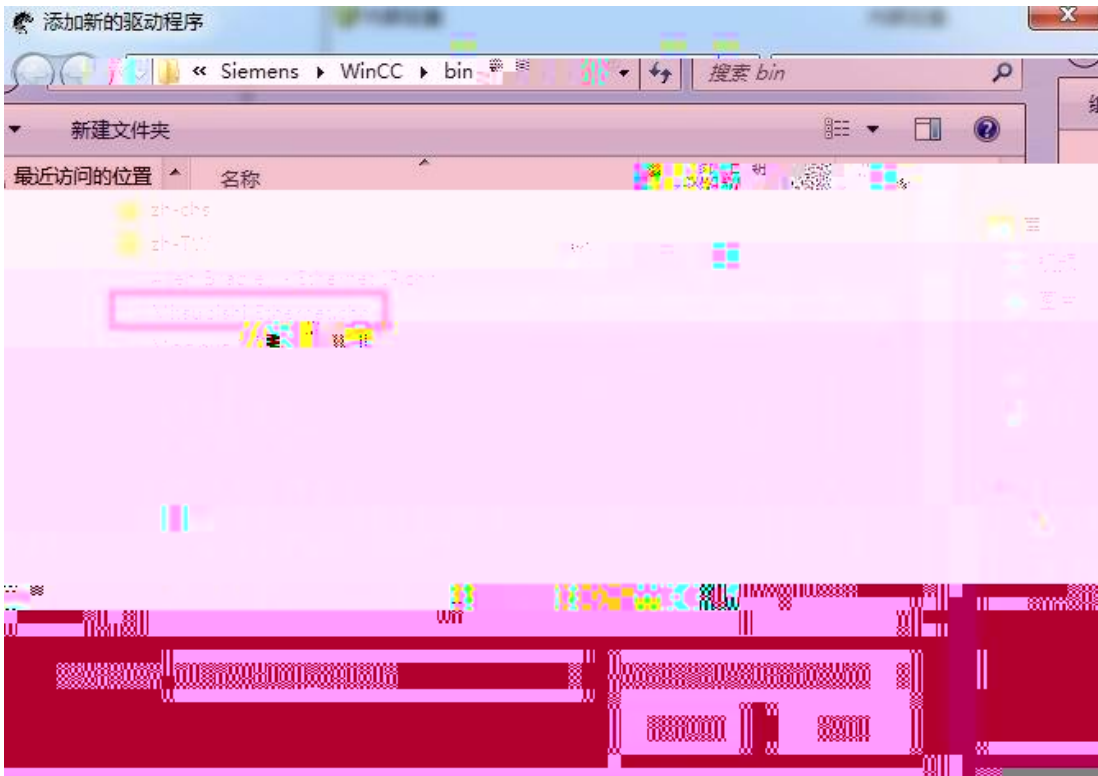




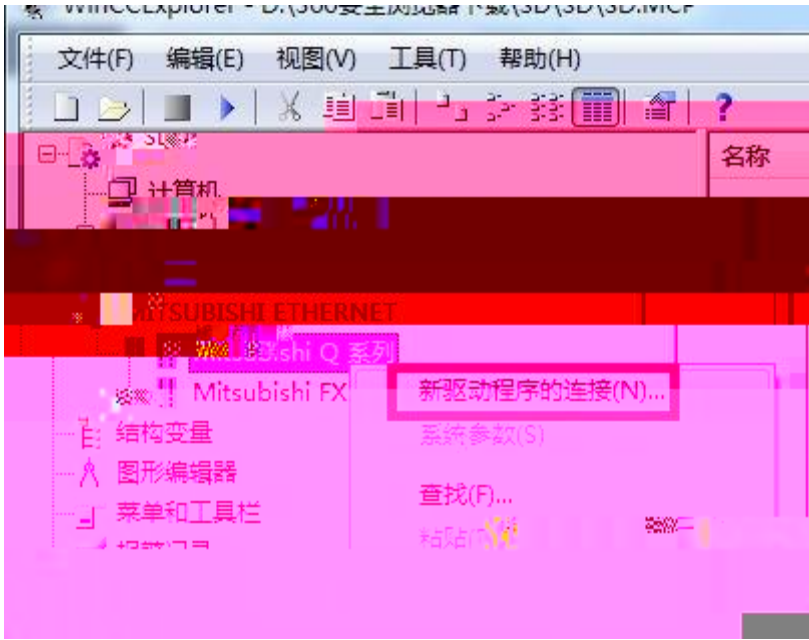




2. " Mitsubishi Ethernet. chn"



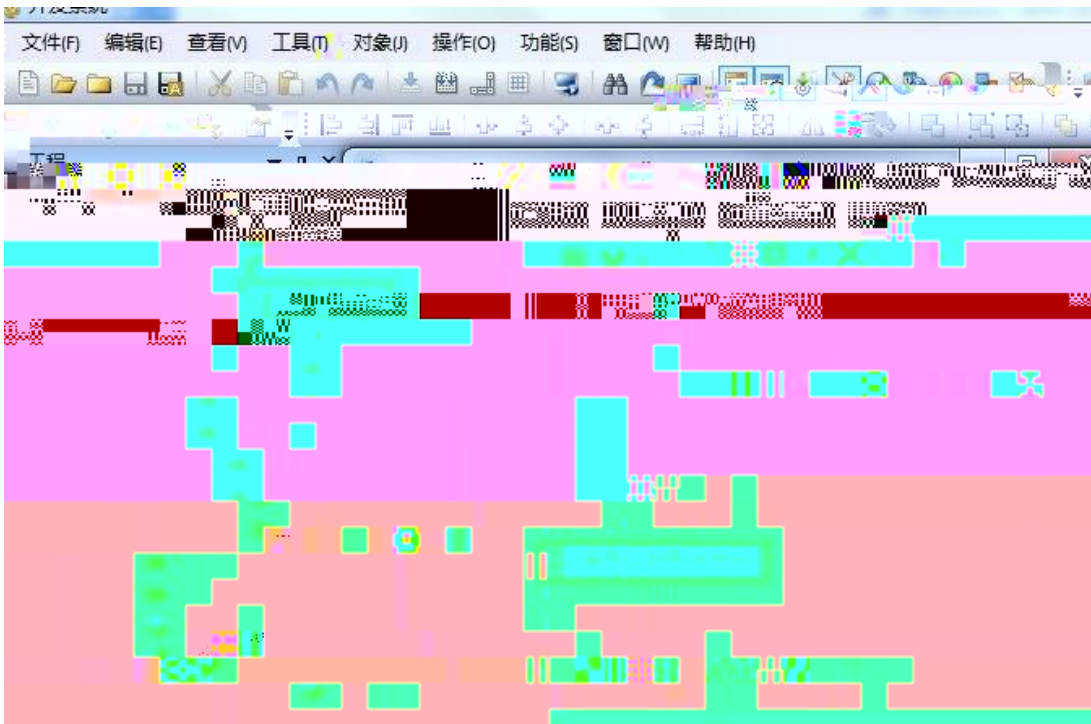
3. " Mitsubishi shi Q " " " "



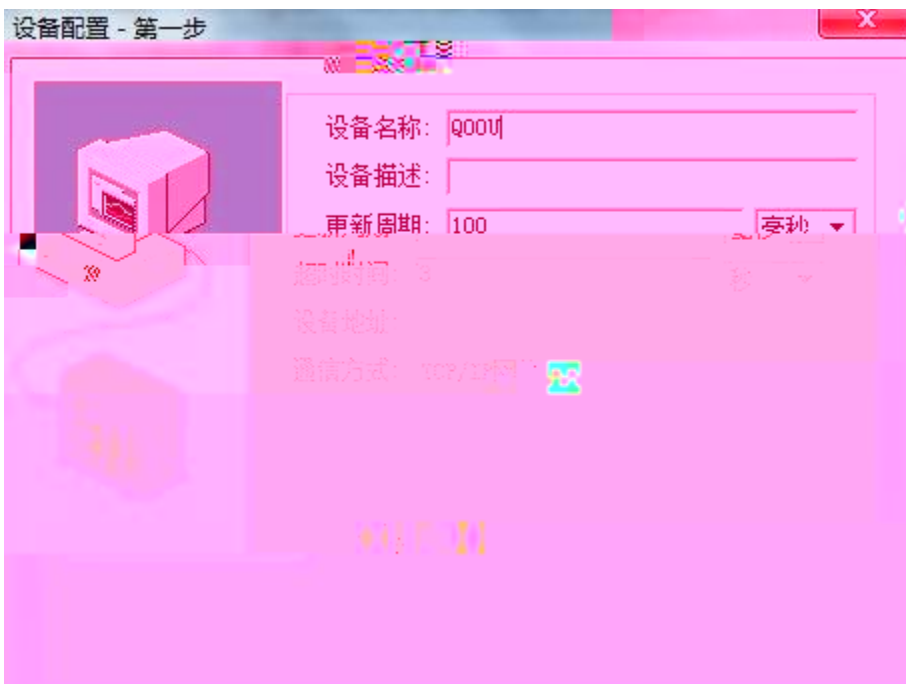
4. " " IP " 5002" " TCP" PC " 255"



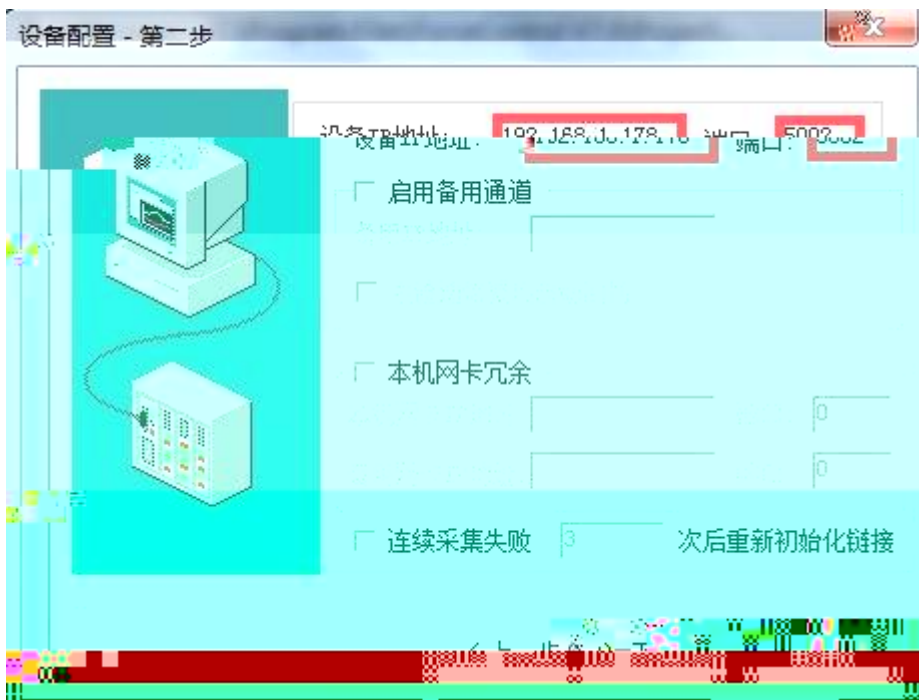
1. " IO " PLC " MITSUBISHI Q 3E



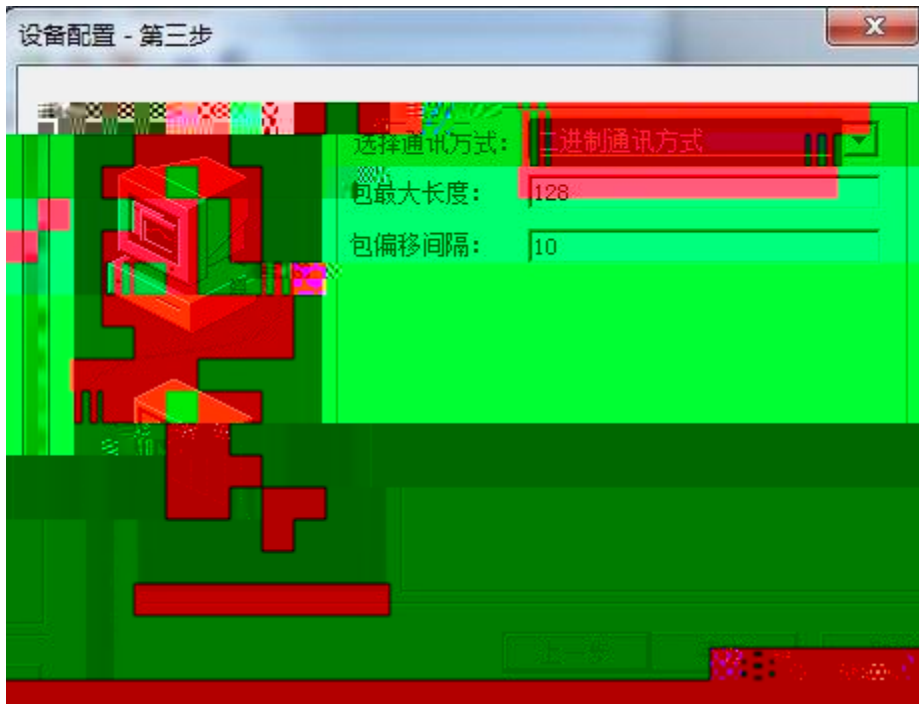
2 " " " "



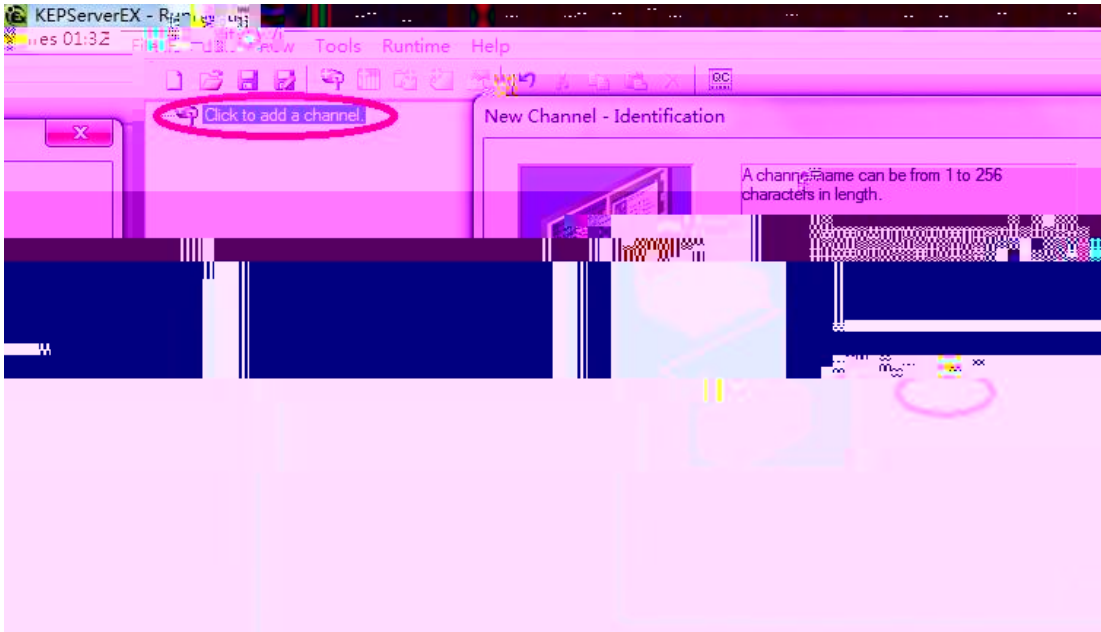
3" IP " RVNet-Q IP " " 5002



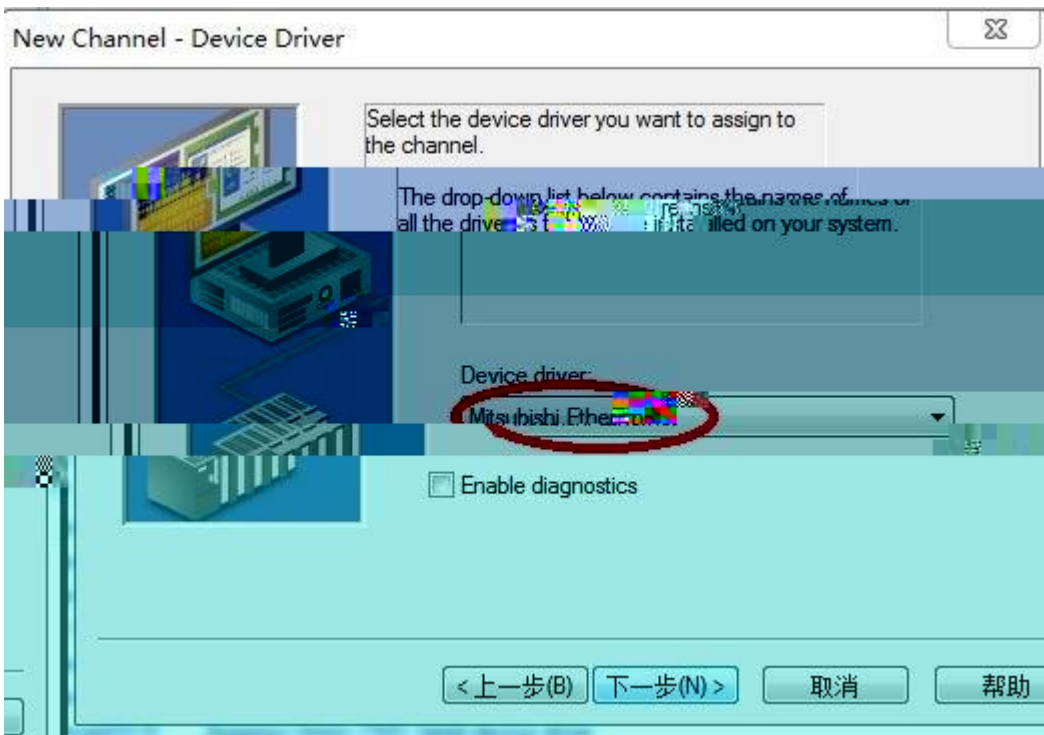
4. " " " "



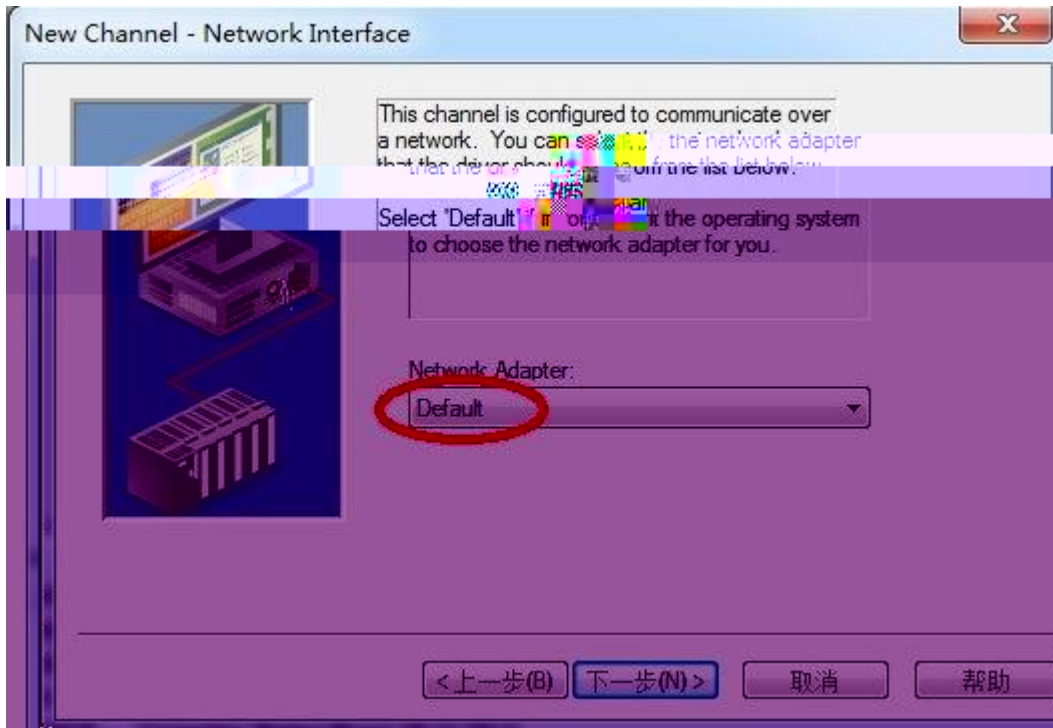
1. KEPServerEX " Click to add a channel" " "



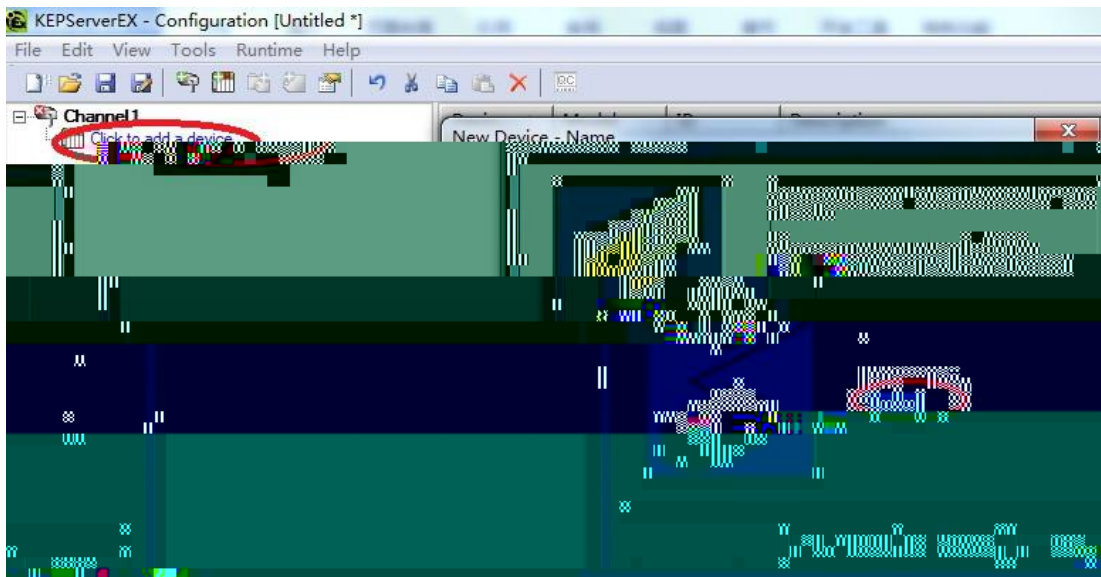
2 " Mitsubishi Ethernet"



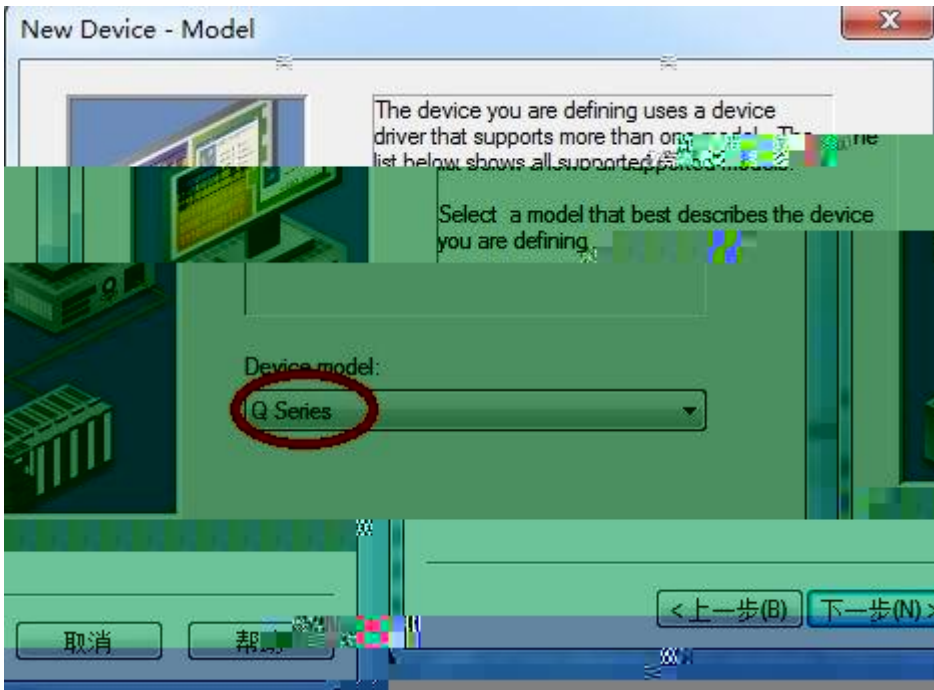
3 "Default"



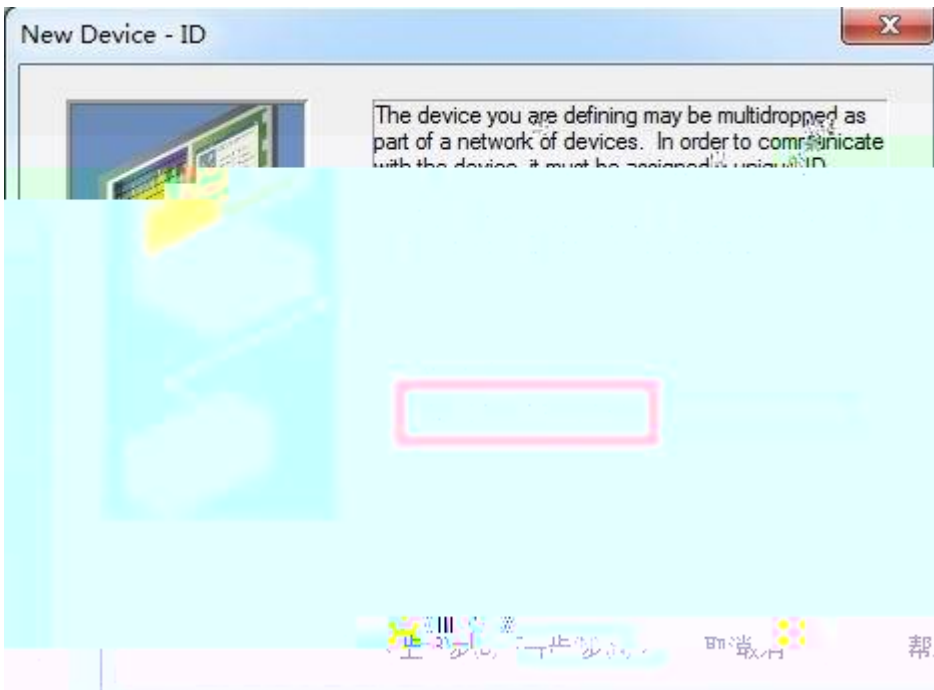
4 " click to add a device" ,



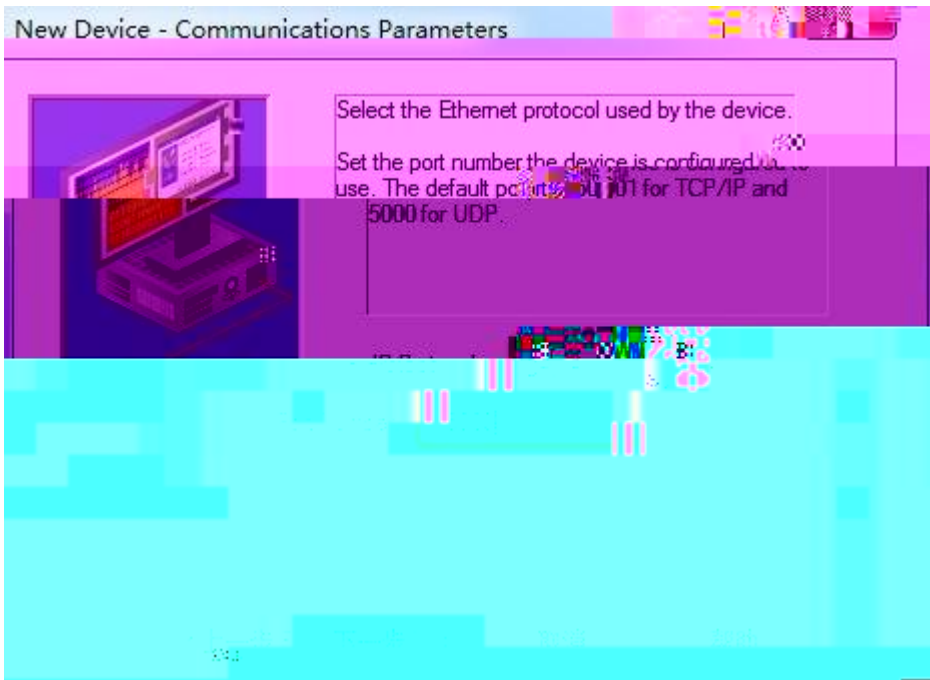
5. PLC

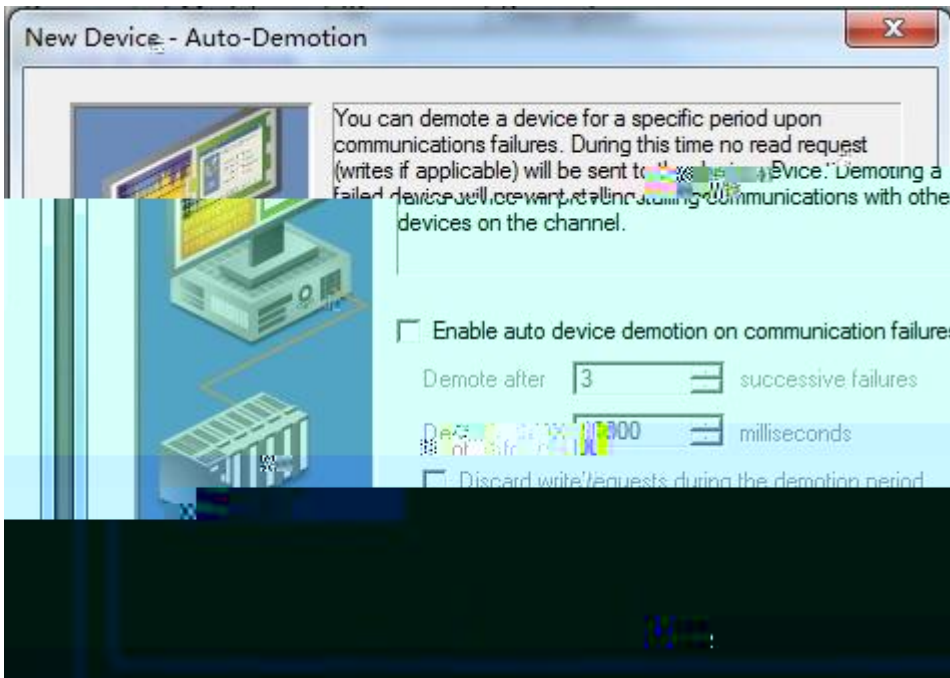


6. IP :NO:255 NO 255

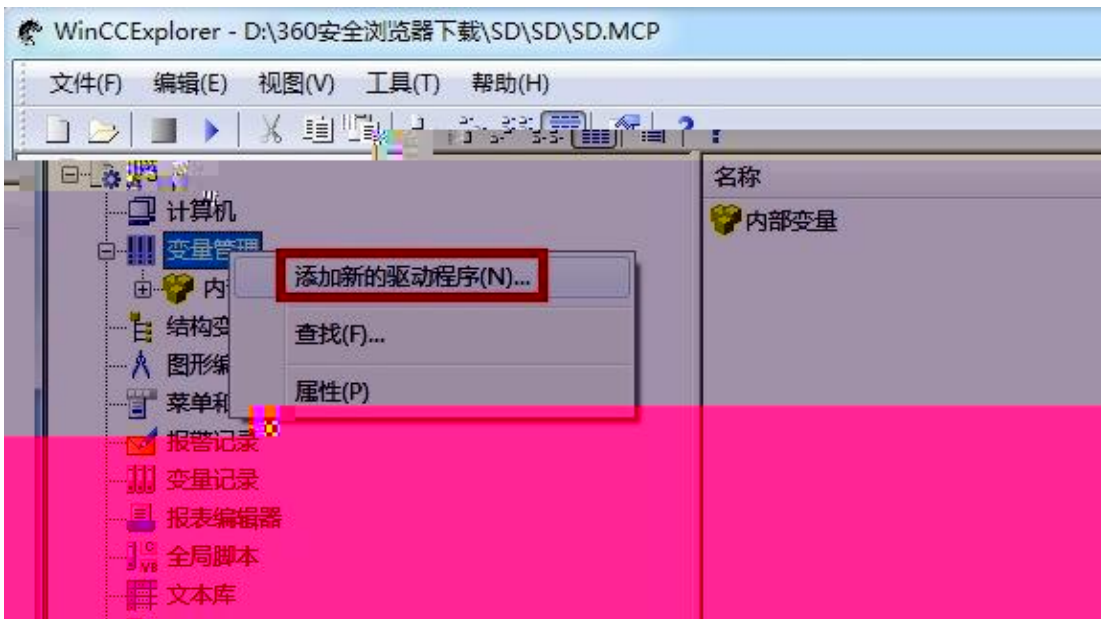


7.IP "TCP/IP" 5002

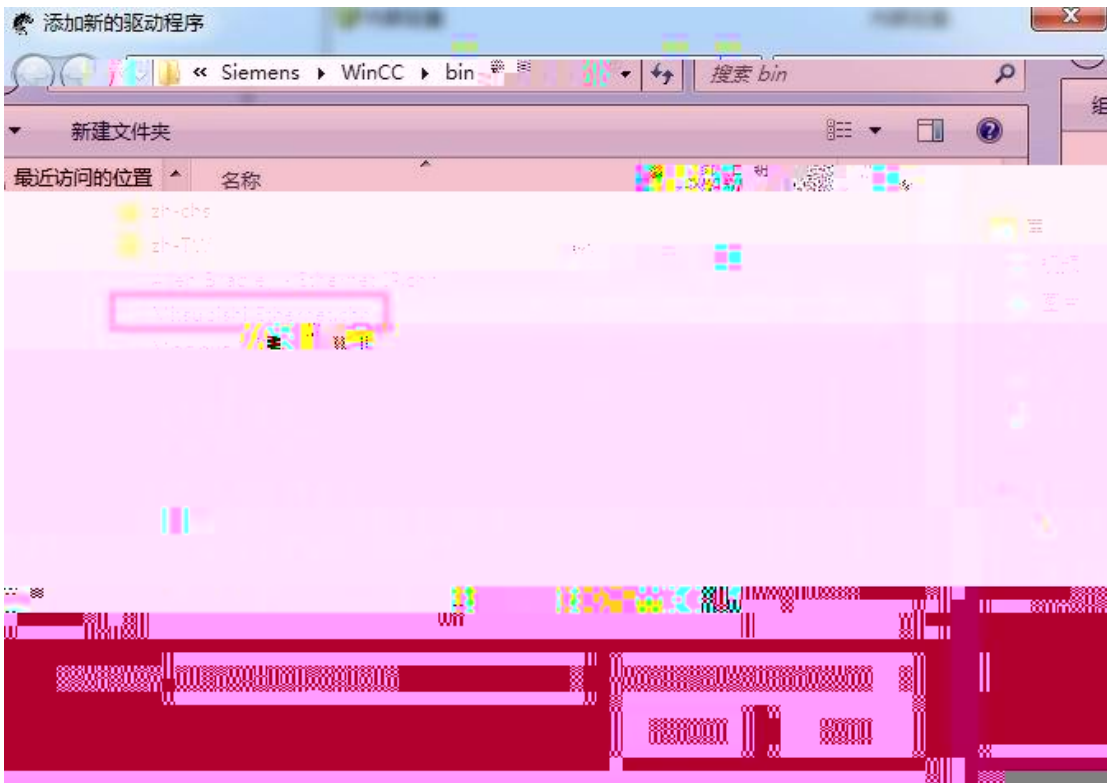




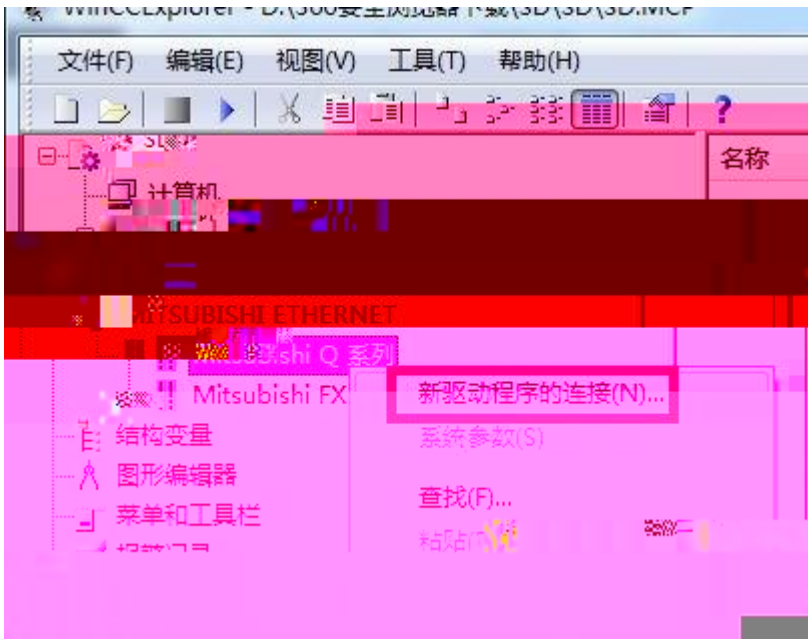
1. " " " "



2. " Mitsubishi Ethernet.chn"



3. " Mitsubishi shi Q " " " "



4. " " " IP " 5002 " TCP" PC " 255"



RVNet-Q

ModbusTCP

ModbusTCP

Modbus	Q	PLC	
000001		Y0	Ym = 000001+m
008201		DY0	DYm = 008201+m
016401		M0	Mm = 016401+m
024601		SM0	SMm = 024601+m
026701		S0	Sm = 026701+m
034901		V0 2670	p

FC1( ) FC1:512  
 FC5( ) FC5:1  
 FC15( )

① m 16 HEX , Y1F m 1F Y1F 000001+31  
 = 000032 31 1F

## 2 ModScan32

\ \ modscan2\_cr.rar

### 1. ModScan32

2. Connection/Connect Remote TCP/IP Server RVNet-Q IP Service 502  
 [OK] 1



1

3. " ModSca1" Device ID PLC 1 03:HOLDING REGISTER  
Address = 0001 Length = 100

4. 400001 400100 16 Q PLC D0 D100

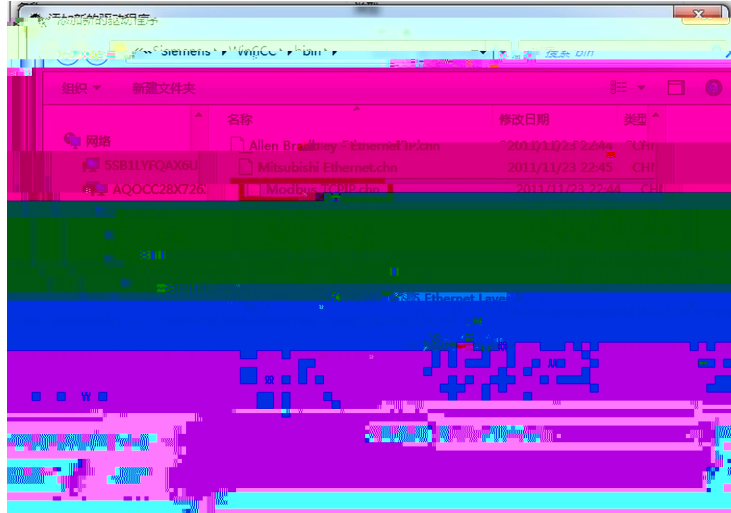
2



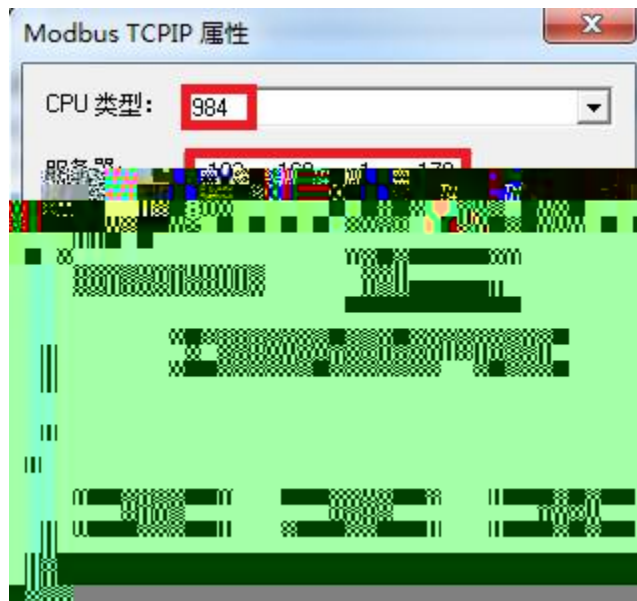
2

5.

1. Wincc  
 “Modbus TCP/IP.chm”



2. “Modbus TCP/IP #1”  
 “ CPU ” “ 984 ” “ ” RVNet-Q IP ,





---

		MD6			
		9.6K	19.2K	38.4K	115.2Kbps
		Q			
X2	HMI	RS232			
		MD6			
		9.6K	19.2K	38.4K	115.2Kbps
		Q			
		GX Works2			
OPC		KepWare OPC			
		IE	192.168.1.178		
		Q		24VDC	
		24VDC/100mA			
		0~60			
		90%			
		35mm			

